

23 TON

WHL23TC100



The WHL23TC100 offers a long boom length that provides a distinct advantage on today's modern construction site. The 4-stage dual crowd boom only uses a single cylinder mounted inside the boom.

FEATURES & BENEFITS

- 23-ton lifting capacity (30,000lbs at 10' radius)
- 100' boom length (110' sheave height)
- 12,000 lb planetary winch
- Optional continuous rotation
- External drive swing box with eccentric ring backlash adjustment
- Load moment indicator (LMI) and shutdown system available
- Two speed winch motor can easily change between high and low speed for precise control and job efficiency
- Large gear teeth prevent gear tooth breakage
- External mount provides easy and instant servcability for maintenance and adjustment
- Digital wireless weight indicator is available to inform the operator what the load is
- LMI can be added and wired directly to the shut down valve to prevent overloading of the crane

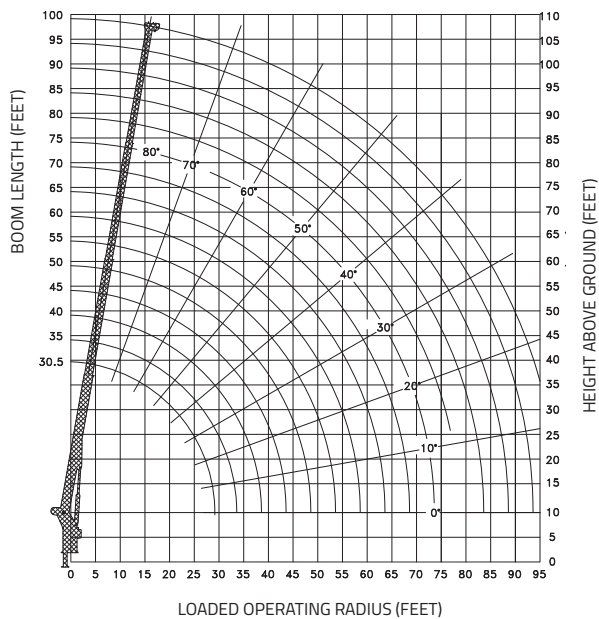
Continued on next page »

LOAD CHARTS AND SPECIFICATIONS

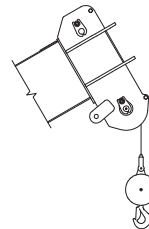
MAXIMUM RATED LOAD IN LBS. WITH OUTRIGGERS FULLY EXTENDED												
LOADED OPERATING RADIUS	LOADE BOOM ANGLE	RETRACTED BOOM LENGTH	LOADED BOOM ANGLE	BOOM LENGTH	LOADED BOOM ANGLE	BOOM LENGTH	LOADED BOOM ANGLE	BOOM LENGTH	LOADED BOOM ANGLE	BOOM LENGTH	LOADED BOOM ANGLE	EXTENDED BOOM LENGTH
FEET	°	30 ft	°	45 ft	°	60 ft	°	75 ft	°	90 ft	°	100 ft
10	70	28,200	77	24,000								
12	66	24,500	74	23,500	78	16,000						
15	60	19,000	70	17,500	75	14,200	78	12,000				
20	47	13,750	63	15,500	70	13,000	74	10,000	77	7,800	78	7,300
25	31	10,500	56	12,000	65	10,000	70	9,000	74	6,500	75	6,200
30			48	9,300	60	8,500	66	8,000	70	6,000	73	5,700
35			39	7,300	55	7,000	62	6,500	67	5,800	70	5,200
40			26	5,800	48	5,800	58	5,200	64	5,000	67	4,700
45					41	4,500	53	4,500	60	4,400	63	4,200
50					33	3,500	48	3,500	56	3,500	60	3,500
55					23	3,000	43	3,200	52	3,200	57	3,200
60							37	2,500	48	2,500	53	2,500
65							30	2,100	44	2,200	50	2,200
70							20	1,600	39	1,600	46	1,600
75									33	1,200	41	1,200
80									27	1,000	37	1,000
85									18	600	32	600
90											25	400

RATINGS ABOVE THE HEAVY LINE ARE BASED ON STRUCTURAL COMPETENCE AND NOT MACHINE STABILITY.

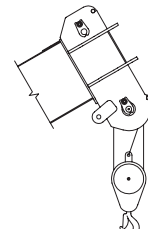
NOTE: Deductions must be made from rated loads for lifting accessories: overhaul balls, load hooks, snatch blocks and load blocks.



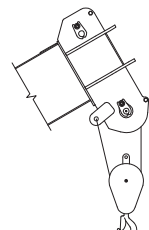
1 PART LINE
MAXIMUM LOADS
9/16" CABLE 6,000 LBS



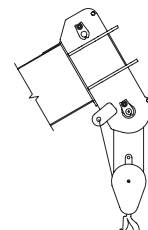
3 PART LINE
MAXIMUM LOADS
9/16" CABLE 18,000 LBS



2 PART LINE
MAXIMUM LOADS
9/16" CABLE 12,000 LBS



4 PART LINE
MAXIMUM LOADS
9/16" CABLE 24,000 LBS



12155 - 154 Street
Edmonton, AB Canada T5V 1J3
Toll Free: 1 800 661 0378 | Fax: 780 455 6770

www.weldco-hydralift.com