

23 TON

WHL23TC75



The WHL23TC75 is a mid-capacity crane with a three-stage boom that extends to 75 feet. Introduced in 2004, the model continues to be popular with a wide range of industries that appreciate its durable and rugged design.

FEATURES & BENEFITS

- 23-ton lifting capacity (30,000lbs at 10' radius)
- 75' boom length (85' sheave height)
- 12,000 lb planetary winch
- External drive swing box with eccentric ring backlash adjustment
- Load moment indicator (LMI) and shutdown system available
- Two speed winch motor can easily change between high and low speed for precise control and job efficiency
- Large gear teeth prevent gear tooth breakage
- External mount provides easy and instant servicability for maintenance and adjustment
- Digital wireless weight indicator is available to inform the operator what the load is
- LMI can be added and wired directly to the shut down valve to prevent overloading of the crane

OPTIONAL

- Continuous rotation swivel, includes 4 electrical slip rings
- Fixed swing around jib, stows along side of boom
- Snatch and crane blocks for multi-part line operation
- "Tractor Mount Package" for operating controls from behind the crane
- Hydraulic tank heater (hot water)
- Digital radio weight indicator
- Boom lights

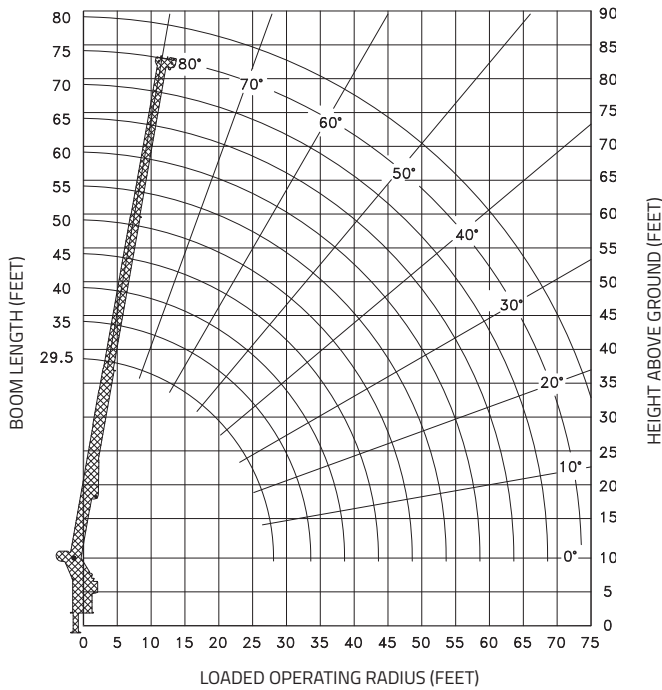
Continued on next page »

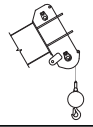
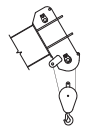
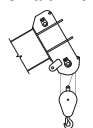
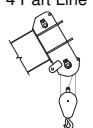
LOAD CHARTS AND SPECIFICATIONS

MAXIMUM RATED LOAD IN LBS. WITH OUTRIGGERS FULLY EXTENDED												
LOADED OPERATING RADIUS	LOADED BOOM ANGLE	RETRACTED BOOM LENGTH	LOADED BOOM ANGLE	BOOM LENGTH	LOADED BOOM ANGLE	BOOM LENGTH	LOADED BOOM ANGLE	BOOM LENGTH	LOADED BOOM ANGLE	BOOM LENGTH	LOADED BOOM ANGLE	EXTENDED BOOM LENGTH
FEET	°	29' 6"	°	40 ft	°	50 ft	°	60 ft	°	70 ft	°	74' 6"
10	70	30,000	76	24,000	79	24,000						
12	66	25,000	73	24,000	76	22,000	79	20,000				
15	59	22,000	68	22,000	73	19,000	76	17,500	78	16,000	78	15,000
20	47	16,500	60	16,500	66	16,000	71	14,500	73	13,500	75	13,000
25	30	13,000	51	13,000	60	12,000	65	11,000	69	10,500	70	10,000
30			41	10,500	53	10,000	60	9,500	65	9,000	66	8,500
35			27	8,500	45	8,000	54	7,500	60	7,500	62	7,000
40					37	7,000	48	6,500	56	6,500	58	6,500
45					25	5,500	42	5,500	50	5,400	53	5,300
50							33	4,500	45	4,400	48	4,400
55							23	3,700	38	3,600	43	3,600
60									31	3,000	36	3,000
65									21	2,500	29	2,500
70											19	2,100

RATINGS ABOVE THE HEAVY LINE ARE BASED ON STRUCTURAL COMPETENCE AND NOT ON MACHINE STABILITY.

NOTE: Deductions must be made from rated loads for lifting accessories: Fixed jibs, telescopic jibs, overhaul balls, load hooks, snatch blocks and load blocks.



Maximum Load (lbs) 9/16 Cable	
1 Part Line 	6,000
2 Part Line 	12,000
3 Part Line 	18,000
4 Part Line 	24,000



12155 - 154 Street
Edmonton, AB Canada T5V 1J3
Toll Free: 1 800 661 0378 | Fax: 780 455 6770

www.weldco-hydralift.com