

35 TON

WHL35TC97



The WHL35TC97 is a natural evolution of our popular 30-ton cranes. Higher lifting capacity and longer reach are obvious benefits of this new design. The versatility of integrated out and down outriggers allows for crane set-up in space restricted areas. These cranes have a wider total spread than other outrigger styles, and a dual control station design means the crane can be operated from either side.

FEATURES & BENEFITS

- 35-ton lifting capacity (47,000 lbs at 10' radius)
- 105' tip height (fully extended)
- 4 section 97' fully proportional boom
- 32' retracted length
- 15,000 lb, 2 speed grooved drum planetary winch with integral brake, includes cable packer.
- Out and down outriggers - 22'-2" max. spread
- High strength box construction, welded booms for maximum strength to weight ratio
- Planetary type winch with integral brake for high efficiency and security
- Standard audible capacity alert system
- Standard audible outrigger warning alarm

OPTIONAL EQUIPMENT

- Fixed swing around jib, stows along side of boom
- Snatch block and crane blocks for multi-part line operation
- Hydraulic tank heater
- Digital radio weight indicator
- Boom lights

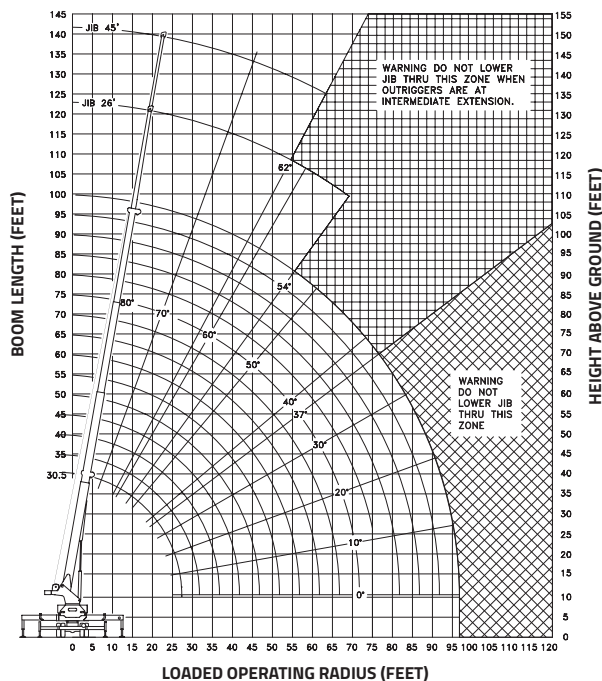
Continued on next page »

LOAD CHARTS AND SPECIFICATIONS

MAXIMUM RATED L OAD IN LBS. WITH OUTRIGGERS FULLY EXTENDED													FIXED JIB		26 / 45' TELESCOPIC JIB			
LOADED OPERATING RADIUS	LOADED BOOM ANGLE	RETRACTED BOOM LENGTH	LOADED BOOM ANGLE	BOOM LENGTH	LOADED BOOM ANGLE	BOOM LENGTH	LOADED BOOM ANGLE	BOOM LENGTH	LOADED BOOM ANGLE	BOOM LENGTH	LOADED BOOM ANGLE	EXTENDED BOOM LENGTH	LOADED BOOM ANGLE	FIXED JIB	LOADED BOOM ANGLE	JIB RETRACTED	LOADED BOOM ANGLE	JIB EXTENDED
FEET	<°	30' 2"	<°	45 ft	<°	60 ft	<°	75 ft	<°	90 ft	<°	96' 11"	<°	26 ft	<°	26 ft	<°	45 ft
10	71	47,000	77	44,000	80	23,500												
12	67	41,000	75	39,000	79	23,000	81	22,000										
15	60	35,000	71	32,000	76	22,500	79	22,000	80	21,500	81	13,000						
20	49	26,000	64	25,000	71	22,000	75	21,000	77	20,000	78	13,000						
25	34	20,000	56	20,000	65	19,500	71	18,000	74	16,000	75	13,000	78	8,000	78	7,400		
30			48	15,500	60	15,000	66	14,500	71	14,000	72	13,000	76	7,000	76	6,400	80	4,650
35			38	12,000	54	11,900	62	11,800	67	11,900	69	12,000	74	5,950	74	5,400	78	4,300
40			27	9,500	48	9,450	58	9,100	64	9,250	66	9,300	71	5,400	71	4,850	76	3,900
45					41	9,150	53	8,800	60	7,450	62	7,500	69	4,700	69	4,200	75	3,500
50					33	8,800	48	8,200	56	6,050	59	6,100	66	4,300	66	3,900	73	3,000
55					21	8,200	43	7,600	52	5,050	55	5,100	63	3,900	63	3,450	71	2,750
60							37	7,100	48	4,150	52	4,200	61	3,650	61	3,250	69	2,500
65							30	6,300	44	3,400	49	3,500	58	3,300	58	2,950	67	2,300
70									39	2,850	44	2,900	55	3,050	55	2,750		
75									34	2,350	39	2,400						
80									27	1,900	35	1,900						
85											29	1,600						
90											22	1,200						
		720		482		360		290		240		220	FIXED		DEDUCTIONS FOR STOWED JIB (LBS)			
		900		605		450		360		300		275	TELESCOPIC					
RATINGS ABOVE THE HEAVY LINE ARE BASED ON STRUCTURAL COMPETENCE AND NOT ON MACHINE STABILITY.																		

RATINGS ABOVE THE HEAVY LINE ARE BASED ON STRUCTURAL COMPETENCE AND NOT ON MACHINE STABILITY.

NOTE: Deductions must be made from rated loads for lifting accessories: fixed jibs, telescopic jibs, overhaul balls, load hooks, snatch blocks and load blocks.



Maximum Loads 5/8" Cable	
1 Part Line 9,000 lbs	4 Part Line 36,000 lbs
2 Part Line 18,000 lbs	5 Part Line 45,000 lbs
3 Part Line 27,000 lbs	6 Part Line 54,000 lbs



12155 - 154 Street
Edmonton, AB Canada T5V 1J3
Toll Free: 1 800 661 0378 | Fax: 780 455 6770

www.weldco-hydralift.com