

45 TON

WHL45TC77



With a 45-ton lifting capacity, long reach and a sub-frame suitable for fifth wheel installation, the Hydra-Lift WHL45TC77 Swing Cab Cranes offer heavy lifting and versatility.

Out and down outriggers with independently operated horizontal extension cylinders and vertical jack cylinders, give the operator true stability on uneven surfaces or in tight locations. The fully equipped cab provides the operator with a comfortable working environment in all weather conditions. Mounted on a tandem steer tri-drive rear axle chassis with fifth wheel, or single steer tri-drive rear axle chassis, or tandem steer tandem rear axle chassis without fifth wheel, WHL45TC77 Cranes are truly capable of heavy lifting and heavy hauling.

FEATURES & BENEFITS

- 45-ton lifting capacity (80,000 lbs at 10' radius)
- 87' tip height (fully extended)
- 3 section 77' fully proportional boom
- 30.5' retracted length
- Continuous rotation
- Tapered rear subframe for fifth wheel installation
- Out and down outriggers
- Dual fan oil cooler
- Pre-wired boom and cab for work lights
- 40-ton four-sheave crane block (Easy Reeve)
- 15,000 lb, 2 speed grooved drum planetary winch with integral brake for high efficiency and security, includes cable packer
- High strength box construction, welded booms for maximum strength to weight ratio
- A2B and LMI system with digital radio weight indicator
- Remote Monitoring Video System: two cameras and one in-cab colour display (view right rear outriggers and winches)

OPTIONAL EQUIPMENT

- 31' Orientable (0°, 15°, 30°) swing around jib, stows on side of boom
- 31' - 51' Orientable (0°, 15°, 30°) two-stage swing around jib, stows on side of boom
- Hydraulic tank heater
- Boom lights
- Auxiliary winch options, 12,000 lb or 15,000 lb winch
- Two person self leveling man basket
- Air conditioning
- Remote radio crane controls

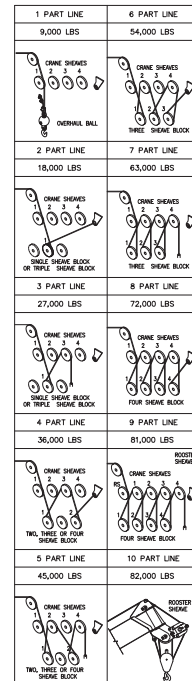
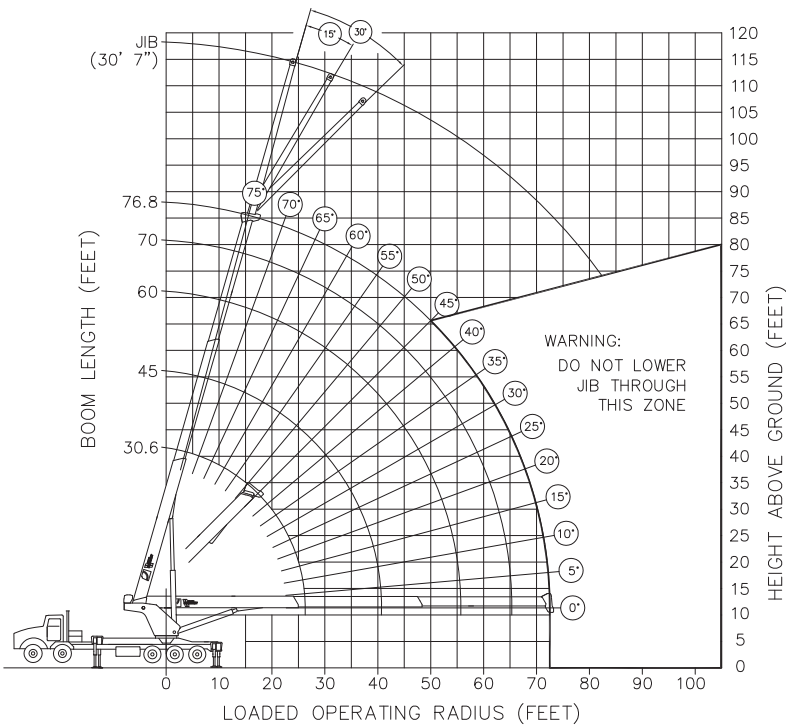
Continued on next page »

LOAD CHARTS AND SPECIFICATIONS

| MAXIMUM RATED LOAD IN LBS. WITH OUTRIGGERS FULLY EXTENDED | | | | | | | | | | | | | | | | | | | | | | | |
|---|-------------------|-----------------------|-------------------|-------------|-------------------|-------------|-------------------|-------------|-------------------|-------------|-------------------|-------------|-------------------|-------------|-------------------|---------------------------|-------------------------|----------------------|-------|------------|-------|------------|------|
| LOADED OPERATING RADIUS | LOADED BOOM ANGLE | RETRACTED BOOM LENGTH | LOADED BOOM ANGLE | BOOM LENGTH | LOADED BOOM ANGLE | BOOM LENGTH | LOADED BOOM ANGLE | BOOM LENGTH | LOADED BOOM ANGLE | BOOM LENGTH | LOADED BOOM ANGLE | BOOM LENGTH | LOADED BOOM ANGLE | BOOM LENGTH | LOADED BOOM ANGLE | EXTENDED BOOM LENGTH | LOADED OPERATING RADIUS | 30'7" ORIENTABLE JIB | | | | | |
| | | | | | | | | | | | | | | | | | | BOOM ANGLE | LOAD | BOOM ANGLE | LOAD | BOOM ANGLE | LOAD |
| FEET | ° | 30.6' | ° | 40' | ° | 50' | ° | 60' | ° | 70' | ° | 74' | ° | 76.8' | FEET | ° | LB | ° | LB | ° | LB | | |
| 10 | 62 | 80,000 | 69 | 61,200 | 74 | 56,250 | 74 | 50,000 | | | | | | 10 | | | | | | | | | |
| 12 | 58 | 71,100 | 66 | 61,200 | 71 | 56,250 | 74 | 50,000 | | | | | | 12 | | | | | | | | | |
| 15 | 51 | 57,700 | 61 | 54,000 | 67 | 52,800 | 71 | 45,000 | 74 | 36,000 | | | | 15 | | | | | | | | | |
| 20 | 37 | 43,000 | 53 | 43,000 | 61 | 42,000 | 66 | 38,000 | 70 | 31,000 | 72 | 30,000 | 72 | 27,000 | 20 | | | | | | | | |
| 25 | 16 | 35,500 | 43 | 31,500 | 54 | 32,900 | 61 | 31,000 | 65 | 27,000 | 68 | 26,000 | 68 | 22,000 | 25 | | | | | | | | |
| 30 | | | 31 | 29,300 | 47 | 29,000 | 55 | 26,900 | 61 | 24,000 | 64 | 23,200 | 64 | 19,000 | 30 | 71 | 8,500 | | | | | | |
| 35 | | | 12 | 23,300 | 38 | 23,500 | 49 | 23,600 | 56 | 22,000 | 59 | 20,600 | 59 | 16,000 | 35 | 69 | 8,250 | 73 | 6,800 | | | | |
| 40 | | | | | 28 | 18,300 | 43 | 18,400 | 51 | 18,500 | 54 | 18,100 | 55 | 14,000 | 40 | 66 | 7,200 | 70 | 6,300 | 73 | 5,700 | | |
| 45 | | | | | 11 | 14,700 | 35 | 14,800 | 45 | 14,900 | 49 | 14,700 | 50 | 13,000 | 45 | 63 | 6,600 | 67 | 5,650 | 70 | 5,000 | | |
| 50 | | | | | | | 26 | 12,200 | 39 | 12,300 | 44 | 12,000 | 45 | 11,000 | 50 | 60 | 6,150 | 64 | 5,300 | 67 | 4,750 | | |
| 55 | | | | | | | 10 | 10,100 | 32 | 10,200 | 38 | 10,000 | 40 | 10,000 | 55 | 56 | 5,500 | 61 | 4,800 | 64 | 4,300 | | |
| 60 | | | | | | | | | 24 | 8,600 | 31 | 8,600 | 33 | 8,700 | 60 | 53 | 5,000 | 57 | 4,550 | 60 | 3,900 | | |
| 65 | | | | | | | | | 9 | 7,300 | 22 | 7,300 | 26 | 7,400 | 65 | 50 | 4,600 | 54 | 4,200 | 56 | 3,650 | | |
| 70 | | | | | | | | | | | | | 15 | 6,300 | 70 | | | 50 | 3,900 | 53 | 3,400 | | |
| 75 | | | | | | | | | | | | | | 75 | | | | | | 49 | 3,100 | | |
| | | 975lbs | | 675lbs | | 500lbs | | 425lbs | | 375lbs | | 350lbs | | 325lbs | | Deductions for Stowed Jib | | | | | | | |

RATINGS ABOVE THE HEAVY LINE ARE BASED ON STRUCTURAL COMPETENCE AND NOT ON MACHINE STABILITY.

- NOTE:**
1. Deductions must be made from rated loads for lifting accessories: fixed jibs, telescopic jibs, overhaul balls, load hooks, snatch blocks and load blocks
 2. Lift line ratings are based on 5/8" 18 x 19 rotation resistant wire rope with a minimum breaking strength of 45400 lbs (sf>5).
 3. Sheaves numbered from left to right when viewed facing the crane.



12155 - 154 Street
 Edmonton, AB Canada T5V 1J3
 Toll Free: 1 800 661 0378 | Fax: 780 455 6770

www.weldco-hydralift.com