

50 TON

WHL50TC77 TAXI



Hydra-Lift WHL50TC77 Swing Cab Cranes, with a 50 ton lift rating, are ideally suited for the most demanding heavy lift jobs.

Out and down outriggers have independently operated horizontal extension cylinders and vertical jack cylinders, for true stability on uneven surfaces or in tight locations. Fully equipped cabs provide the operator with a comfortable working environment in all weather conditions. Mounted on a single steer tri-drive rear axle chassis, or tandem steer tandem rear axle chassis, WHL50TC77 Cranes deliver heavy lifting performance.

FEATURES & BENEFITS

- 50-ton lifting capacity (82,000 lbs at 10' radius)
- 87' tip height (fully extended)
- 3 section 77' fully proportional boom
- 30.5' retracted length
- Continuous rotation
- 15,000 lb, 2 speed grooved drum planetary winch with integral brake for high efficiency and security, includes cable packer
- Out and down outriggers
- Dual fan oil cooler
- High strength box construction, welded booms for maximum strength to weight ratio
- A2B and LMI system with digital radio weight indicator
- Pre-wired boom and cab for work lights
- Remote Monitoring Video System - two cameras and one in-cab display (view right rear outriggers and winches)
- 40-ton four-sheave crane block (Easy Reeve)

OPTIONAL EQUIPMENT

- 31' Orientable (0°, 15°, 30°) swing around jib, stows on side of boom
- 31' - 51' Orientable (0°, 15°, 30°) two-stage swing around jib, stows on side of boom
- Hydraulic tank heater
- Boom lights
- Auxiliary winch options, 12,000 lb or 15,000 lb winch
- Two person self leveling man basket
- Air conditioning
- Remote radio crane controls

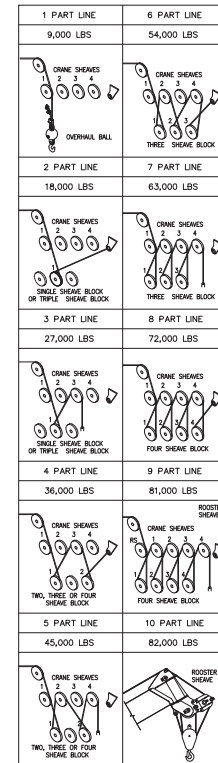
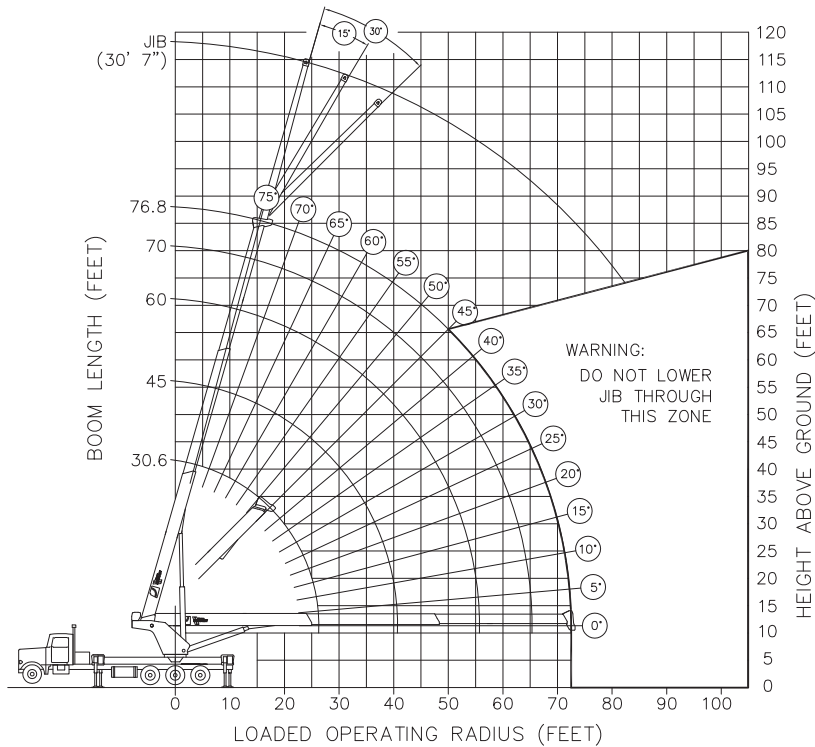
Continued on next page >>

LOAD CHARTS AND SPECIFICATIONS

MAXIMUM RATED LOAD IN LBS. WITH OUTRIGGERS FULLY EXTENDED																							
LOADED OPERATING RADIUS FEET	LOADED BOOM ANGLE °	RETRACTED BOOM LENGTH 30.6'	LOADED BOOM ANGLE °	BOOM LENGTH 40'	LOADED BOOM ANGLE °	BOOM LENGTH 50'	LOADED BOOM ANGLE °	BOOM LENGTH 60'	LOADED BOOM ANGLE °	BOOM LENGTH 70'	LOADED BOOM ANGLE °	BOOM LENGTH 74'	LOADED BOOM ANGLE °	EXTENDED BOOM LENGTH 76.8'	LOADED OPERATING RADIUS FEET	30'7" ORIENTABLE JIB							
																0°		15°		30°			
																BOOM ANGLE °	LOAD LB	BOOM ANGLE °	LOAD LB	BOOM ANGLE °	LOAD LB		
10	62	82,000	69	61,200	74	56,250									10								
12	58	74,000	66	61,200	71	56,250	74	50,000							12								
15	51	63,500	61	59,000	67	52,800	71	45,000	74	36,000				15									
20	37	47,500	53	47,500	61	42,000	66	38,500	70	31,000	72	30,000	72	28,000	20								
25	16	37,000	43	36,900	54	32,900	61	31,000	65	27,000	68	26,000	68	25,000	25								
30			31	28,200	47	28,500	55	27,500	61	24,000	64	23,200	64	22,000	30	71	8,500						
35			12	20,900	38	21,100	49	21,200	56	21,300	59	20,600	59	19,500	35	69	8,250	73	6,800				
40				28	16,400	43	16,400	43	16,500	51	16,600	54	16,600	55	16,700	40	66	7,200	70	6,300	73	5,700	
45				11	13,100	35	13,200	45	13,300	49	13,300	50	13,400	45	63	6,600	67	5,600	70	5,000			
50						26	10,800	39	10,900	44	10,900	45	11,000	50	60	6,150	64	5,100	67	4,750			
55						10	9,000	32	9,000	38	9,100	40	9,100	55	56	5,500	61	4,600	64	4,300			
60								24	7,600	31	7,600	33	7,600	60	53	5,000	57	4,200	60	3,900			
65								9	6,400	22	6,400	26	6,500	65	50	4,600	54	3,900	56	3,650			
70													15	5,500	70			50	3,500	53	3,400		
75														75						49	3,100		
		975lbs		675lbs		500lbs		425lbs		375lbs		350lbs		325lbs									

RATINGS ABOVE THE HEAVY LINE ARE BASED ON STRUCTURAL COMPETENCE AND NOT ON MACHINE STABILITY.

- NOTE:**
1. Deductions must be made from rated loads for lifting accessories: fixed jibs, telescopic jibs, overhaul balls, load hooks, snatch blocks and load blocks
 2. Lift line ratings are based on 5/8" 18 x 19 rotation resistant wire rope with a minimum breaking strength of 45400 lbs (sf>5).
 3. Sheaves numbered from left to right when viewed facing the crane



12155 - 154 Street
Edmonton, AB Canada T5V 1J3
Toll Free: 1 800 661 0378 | Fax: 780 455 6770

www.weldco-hydralift.com