

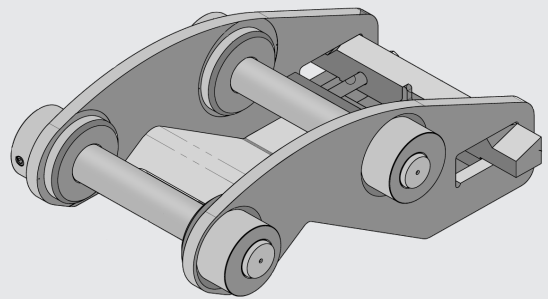
MANUAL WEDGE COUPLER



WBM's Manual Wedge Coupler enables quick changes between attachments that are WBM quick coupler lugged on machine models within the same weight class.

FEATURES & BENEFITS

- Maintains factory tip radius and breakout force
- Allows quick changes between attachments
- Dependable with simple operation
- Includes new safety plate with locking stud & pin, to prevent wedge bar retaining bolts from releasing (as of March 2022)

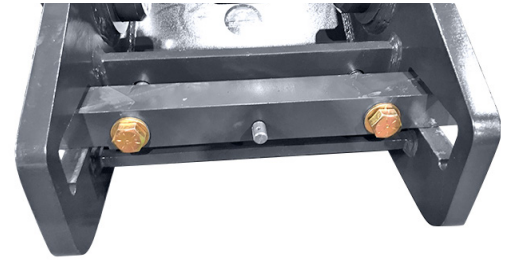


Continued on next page >>

MANUAL COUPLER MODELS

MACHINE SERIES	WBM MODEL #	DESCRIPTION	WEIGHT (lbs)
EX80	EX80-MWC	Use with OEM pins <i>(not included)</i>	84
EX120	EX120--MWC	Use with OEM pins <i>(not included)</i>	191
EX150	EX150-MWC	Use with OEM pins <i>(not included)</i>	221
EX150	EX150-MWC-2P	Includes specialized pins for installation	310
EX200	EX200-MWC	Use with OEM pins <i>(not included)</i>	245
EX200	EX200-MWC-2P	Includes specialized pins for installation	387
EX250	EX250-MWC	Use with OEM pins <i>(not included)</i>	517
EX250	EX250-MWC-2P	Includes specialized pins for installation	808
EX300	EX300-MWC	Use with OEM pins <i>(not included)</i>	613
EX300	EX300-MWC-2P	Includes specialized pins for installation	777
EX400	EX400-MWC	Use with OEM pins <i>(not included)</i>	916
EX400	EX400-MWC-2P	Includes specialized pins for installation	1,321
EX650	EX650-MWC-2P	Includes specialized pins for installation	1,826
EX850	EX850-MWC-2P	Includes specialized pins for installation	2,081

NEW SAFETY PLATE*



WBM style comes with two bolt wedge bar; includes pins where specified.

SAFETY PLATE INSTRUCTION

- After securing the two wedge bar retaining bolts, the safety plate is placed over the retaining stud and bolt heads. The bolts are adjusted to align with the hex shape on the safety plate (the safety plate sits above bolt washers).
- Lock the safety plate in place by securing the lynch-pin through the center-mounting stud.

*New safety plate installed on all Manual Wedge Couplers as of March 2022.