

PRODUCT OVERVIEW





OUR PRODUCTS

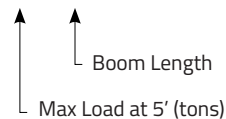
Weldco Hydra-Lift manufactures truck mounted telescopic cranes ranging from 23-ton to 50-ton capacities. The complete Hydra-Lift product line is proudly built in Canada with the highest degree of quality and workmanship to provide our customers with reliable lifting solutions.

We offer numerous crane models having capacities from 30,000 lbs up to 82,000 lbs at a 10 foot loaded operating radius, with boom lengths from 59 feet to 125 feet. Jibs are available in orientable and rigid styles to extend the reach of your Weldco Hydra-Lift crane all the way up to an amazing 161 foot tip height.

Our load charts start with a ten foot loaded operating radius with capacities listed in thousands of pounds. Our metric load charts use a three meter loaded operating radius and capacities in kilograms.

NAMING STANDARD

WHL45TC100



OUR SERVICES

- Manufacturing and fabrication
- Installation
- Rig-ups (custom designed to suit your needs)
- Painting (custom paint)
- After sale service by factory certified technicians
- Factory direct sales in select markets

We provide a one year Standard Warranty. Materials and Specifications are subject to change without notice.

CONTENTS

WHL23TC60/75/100 4

HL30TC70 8

WHL35TC75/97 10

WHL45TC77/100 13

WHL45TC125 16

WHL50TC77/100 Tractor 18

WHL50TC77/100 Taxi 21

WHL Crane Cab 24

Optional Equipment & Accessories 25

Mounting Options 26

Custom Rig Ups 27

WHL23TC60/75/100



Our mid-range crane, the WHL23TC60/75/100 is popular in a wide range of industries that appreciate its durable and rugged design.

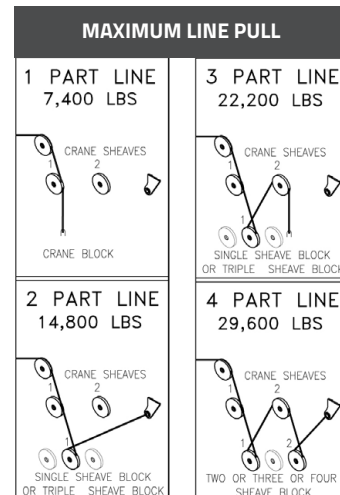
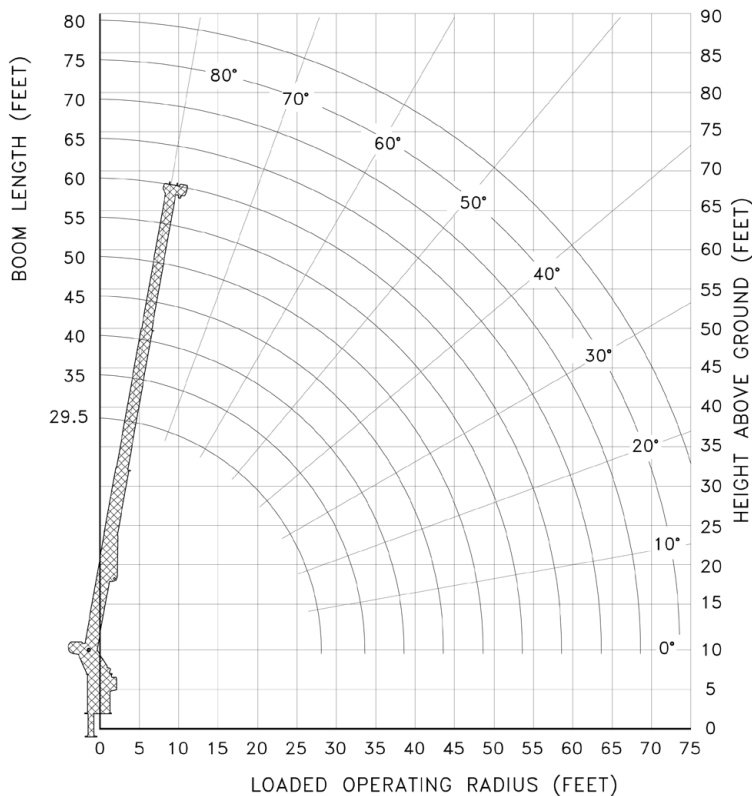
FEATURES & BENEFITS

- 23-ton lifting capacity (30,000lbs at 10' radius)
- 60', 75', 100' boom lengths (68', 82', 107' tip height) fully extended
- 12,000 lb planetary winch
- Optional continuous rotation
- External drive swing box with eccentric ring backlash adjustment
- Load moment indicator (LMI) and shutdown system available to prevent overloading of the crane
- Available digital wireless weight indicator

MAXIMUM RATED LOAD IN LBS. WITH OUTRIGGERS FULLY EXTENDED										
LOADED OPERATING RADIUS	LOADED BOOM ANGLE	RETRACTED BOOM LENGTH	LOADED BOOM ANGLE	BOOM LENGTH	LOADED BOOM ANGLE	BOOM LENGTH	LOADED BOOM ANGLE	BOOM LENGTH	LOADED BOOM ANGLE	BOOM LENGTH
FEET	<°	24' 6"	<°	35 ft	<°	45 ft	<°	55 ft	<°	59' 6"
10	66	30,000	74	24,000	77	22,000				
12	61	25,000	70	21,000	75	19,000	77	18,000		
15	52	20,000	65	18,000	71	16,000	74	15,000	75	14,000
20	33	15,000	55	13,500	64	12,500	69	12,000	70	11,000
25			44	11,000	56	10,000	63	9,500	65	9,000
30			29	9,000	48	8,000	57	7,500	59	7,500
35					38	6,500	50	6,500	53	6,500
40					25	5,500	43	5,500	47	5,500
45							34	4,500	40	4,500
50							23	4,000	31	4,000
55									20	3,500

RATINGS ABOVE THE HEAVY LINE ARE BASED ON STRUCTURAL COMPETENCE. RATINGS BELOW THE HEAVY LINE ARE BASED ON MACHINE STABILITY AND DO NOT EXCEED 85% OF TIPPING.

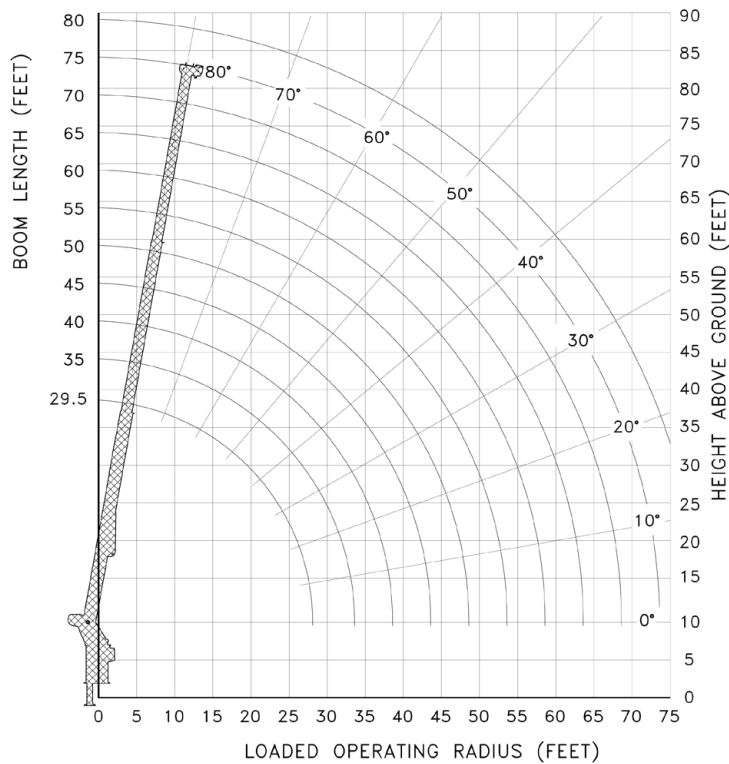
NOTE: Deductions must be made from rated loads for lifting accessories: Fixed jibs, telescopic jibs, overhaul balls, load hooks, snatch blocks and load blocks.



MAXIMUM RATED LOAD IN LBS. WITH OUTRIGGERS FULLY EXTENDED												
LOADED OPERATING RADIUS	LOADED BOOM ANGLE	RETRACTED BOOM LENGTH	LOADED BOOM ANGLE	BOOM LENGTH	LOADED BOOM ANGLE	BOOM LENGTH	LOADED BOOM ANGLE	BOOM LENGTH	LOADED BOOM ANGLE	BOOM LENGTH	LOADED BOOM ANGLE	EXTENDED BOOM LENGTH
FEET	<°	29' 6"	<°	40 ft	<°	50 ft	<°	60 ft	<°	70 ft	<°	74' 6"
10	70	30,000	76	24,000	79	24,000						
12	66	25,000	73	24,000	76	22,000	79	20,000				
15	59	22,000	68	22,000	73	19,000	76	17,500	78	16,000	78	15,000
20	47	16,500	60	16,500	66	16,000	71	14,500	73	13,500	75	13,000
25	30	13,000	51	13,000	60	12,000	65	11,000	69	10,500	70	10,000
30			41	10,500	53	10,000	60	9,500	65	9,000	66	8,500
35			27	8,500	45	8,000	54	7,500	60	7,500	62	7,000
40					37	7,000	48	6,500	56	6,500	58	6,500
45					25	5,500	42	5,500	50	5,400	53	5,300
50							33	4,500	45	4,400	48	4,400
55							23	3,700	38	3,600	43	3,600
60									31	3,000	36	3,000
65									21	2,500	29	2,500
70											19	2,100

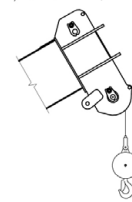
RATINGS ABOVE THE HEAVY LINE ARE BASED ON STRUCTURAL COMPETENCE AND NOT ON MACHINE STABILITY.

NOTE: Deductions must be made from rated loads for lifting accessories: Fixed jibs, telescopic jibs, overhaul balls, load hooks, snatch blocks and load blocks.

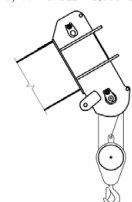


MAXIMUM LINE PULL

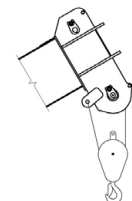
1 PART LINE
MAXIMUM LOADS
9/16" CABLE 6,000 LBS



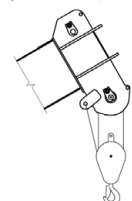
3 PART LINE
MAXIMUM LOADS
9/16" CABLE 18,000 LBS



2 PART LINE
MAXIMUM LOADS
9/16" CABLE 12,000 LBS



4 PART LINE
MAXIMUM LOADS
9/16" CABLE 24,000 LBS



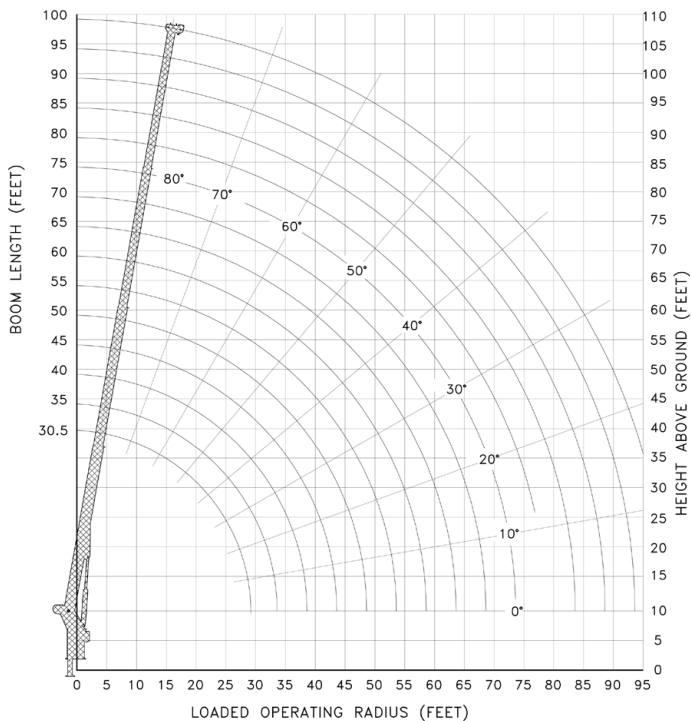
WHL23TC100

MAXIMUM RATED LOAD IN LBS. WITH OUTRIGGERS FULLY EXTENDED

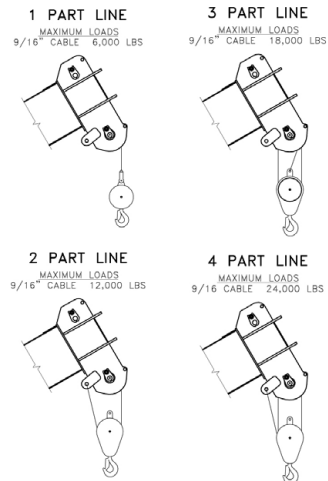
LOADED OPERATING RADIUS	LOADE BOOM ANGLE	RETRACTED BOOM LENGTH	LOADED BOOM ANGLE	BOOM LENGTH	LOADED BOOM ANGLE	BOOM LENGTH	LOADED BOOM ANGLE	BOOM LENGTH	LOADED BOOM ANGLE	BOOM LENGTH	LOADED BOOM ANGLE	EXTENDED BOOM LENGTH
FEET	<°	30 ft	<°	45 ft	<°	60 ft	<°	75 ft	<°	90 ft	<°	100 ft
10	70	28,200	77	24,000								
12	66	24,500	74	23,500	78	16,000						
15	60	19,000	70	17,500	75	14,200	78	12,000				
20	47	13,750	63	15,500	70	13,000	74	10,000	77	7,800	78	7,300
25	31	10,500	56	12,000	65	10,000	70	9,000	74	6,500	75	6,200
30			48	9,300	60	8,500	66	8,000	70	6,000	73	5,700
35			39	7,300	55	7,000	62	6,500	67	5,800	70	5,200
40			26	5,800	48	5,800	58	5,200	64	5,000	67	4,700
45					41	4,500	53	4,500	60	4,400	63	4,200
50					33	3,500	48	3,500	56	3,500	60	3,500
55					23	3,000	43	3,200	52	3,200	57	3,200
60							37	2,500	48	2,500	53	2,500
65							30	2,100	44	2,200	50	2,200
70							20	1,600	39	1,600	46	1,600
75									33	1,200	41	1,200
80									27	1,000	37	1,000
85									18	600	32	600
90											25	400

RATINGS ABOVE THE HEAVY LINE ARE BASED ON STRUCTURAL COMPETENCE AND NOT MACHINE STABILITY.

NOTE: Deductions must be made from rated loads for lifting accessories: fixed jibs, telescopic jibs, overhaul balls, load hooks, snatch blocks and load blocks.



MAXIMUM LINE PULL



HL30TC70



A 30-ton lifting capacity and short stowed boom length makes our HL30TC70 cranes ideal for heavy work in the oilpatch. These cranes can be mounted on either a single or double steering axle chassis.

FEATURES & BENEFITS

- 30-ton lifting capacity (36,500lbs at 10' radius)
- 59' boom length (70' sheave heights) fully extended
- 25' retracted boom length
- 15,000 lb planetary winch with integral brake
- 3 section fully proportional boom
- Planetary drive rotation gear box
- A-frame link style main outriggers
- Dual control consoles and platforms
- High strength box construction, welded booms for maximum strength to weight ratio
- Standard audible capacity alert system
- Standard audible outrigger warning alarm

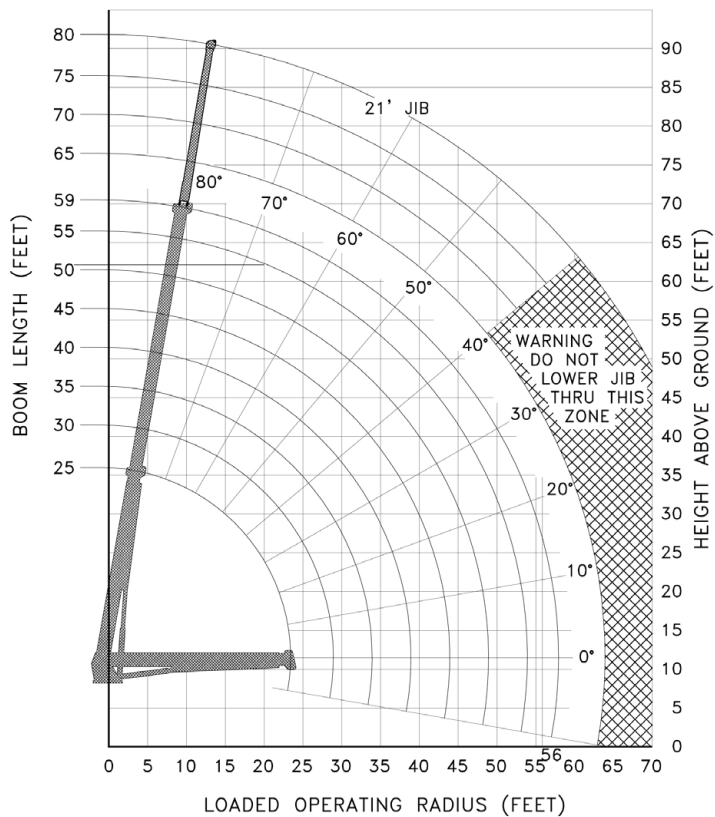
HL30TC70

MAXIMUM RATED LOAD IN LBS. WITH OUTRIGGERS FULLY EXTENDED

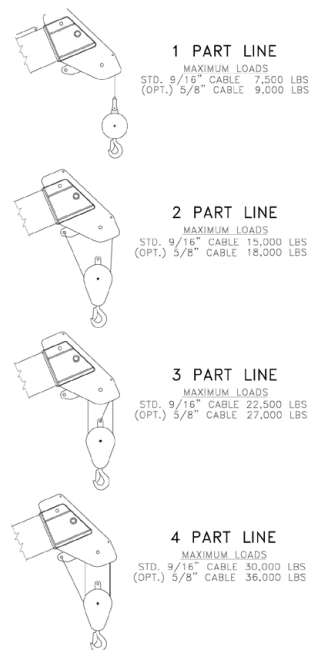
LOADED OPERATING RADIUS	LOADED BOOM ANGLE	RETRACTED BOOM LENGTH	LOADED BOOM ANGLE	BOOM LENGTH	LOADED BOOM ANGLE	BOOM LENGTH	LOADED BOOM ANGLE	BOOM LENGTH	LOADED BOOM ANGLE	BOOM LENGTH	LOADED BOOM ANGLE	21 FT JIB ERECTED
FEET	<°	25 ft	<°	35 ft	<°	45 ft	<°	55 ft	<°	59 ft	<°	
10	67	36,500	74	34,500	78	33,000	80	32,000				
12	62	31,900	71	30,100	75	28,600	78	27,500	79	27,000		
14	56	28,500	67	26,500	73	25,400	76	24,300	77	24,100	80	6,650
16	50	25,500	63	24,100	70	22,600	74	21,600	75	21,400	78	6,200
18	44	23,000	59	21,800	67	20,400	71	19,400	73	19,200	76	5,900
20	36	21,000	55	19,900	64	18,600	69	17,700	71	17,400	75	5,500
25			44	16,600	57	15,500	63	14,700	66	14,500	70	4,700
30			29	13,500	48	13,100	57	12,400	60	12,200	67	4,500
35					38	11,200	51	10,700	54	10,500	63	4,200
40					25	9,300	43	9,300	48	9,200	60	3,600
45							35	8,300	41	8,300	55	3,100
50							24	6,900	33	7,200	51	2,600
55									21	6,000	45	2,200
60											41	2,000
Deductions for Stowed jib		675 lbs		500 lbs		450 lbs		325 lbs		300 lbs		

RATINGS ABOVE THE HEAVY LINE ARE BASED ON STRUCTURAL COMPETENCE AND NOT MACHINE STABILITY.

NOTE: Deductions must be made from rated loads for lifting accessories: fixed jibs, telescopic jibs, overhaul balls, load hooks, snatch blocks and load blocks.



MAXIMUM LINE PULL



WHL35TC75/97



The versatility of integrated out and down outriggers allows for crane set-up in space restricted areas. This crane has a wider total spread than other outrigger styles and a dual control station design that allows the crane to be operated from either side.

FEATURES & BENEFITS

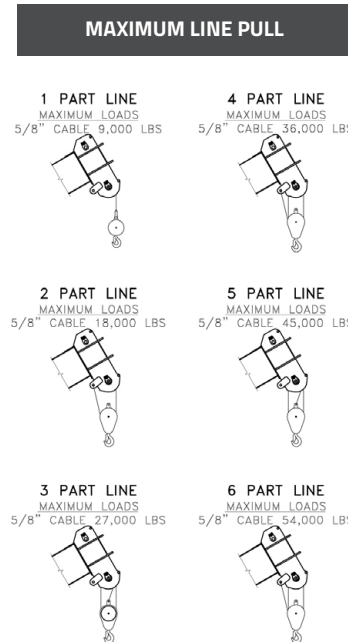
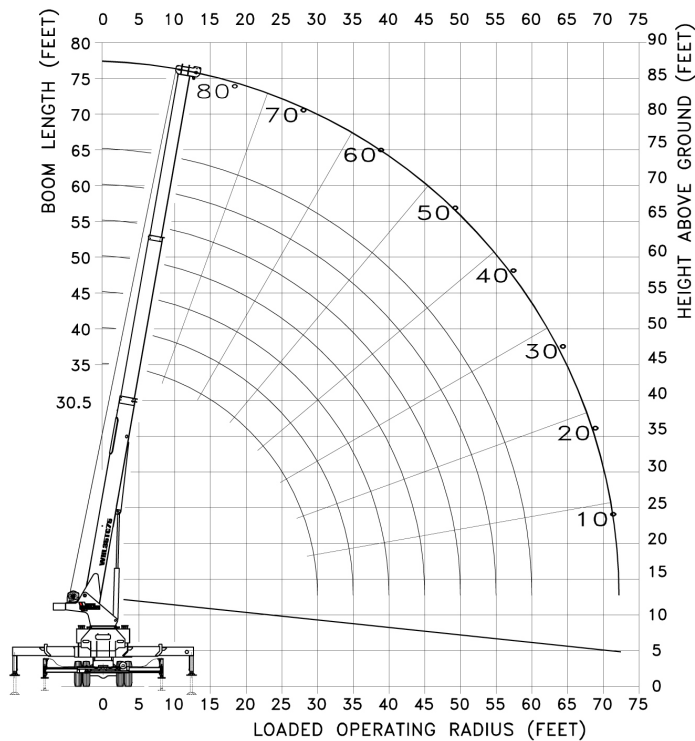
- 35-ton lifting capacity (47,000lbs at 10' radius)
- 75' or 97' boom length (85' or 107' tip height) fully extended
- 3 or 4 section fully proportional boom
- 30.5' retracted length
- 15,000 lb, 2 speed grooved drum planetary winch with integral brake, includes cable packer.
- Out and down outriggers - 22'-2" max. spread
- Planetary drive rotation gear box
- Dual control console with platform
- High strength box construction, welded booms for maximum strength to weight ratio
- Standard audible capacity alert system
- Standard audible outrigger warning alarm

WHL35TC75

MAXIMUM RATED LOAD IN LBS. WITH OUTRIGGERS FULLY EXTENDED													FIXED JIB		26 / 45' TELESCOPIC JIB			
LOADED OPERATING RADIUS	LOADED BOOM ANGLE	RETRACTED BOOM LENGTH	LOADED BOOM ANGLE	BOOM LENGTH	LOADED BOOM ANGLE	BOOM LENGTH	LOADED BOOM ANGLE	BOOM LENGTH	LOADED BOOM ANGLE	BOOM LENGTH	LOADED BOOM ANGLE	EXTENDED BOOM LENGTH	LOADED BOOM ANGLE	FIXED JIB	LOADED BOOM ANGLE	JIB RETRACTED	LOADED BOOM ANGLE	JIB EXTENDED
FEET	<°	30' 2"	<°	35 ft	<°	45 ft	<°	55 ft	<°	65 ft	<°	74' 8"	<°	26 ft	<°	26 ft	<°	45 ft
10	65	47,000	68	45,000	73	44,000	76	43,000										
12	60	41,000	65	40,000	71	39,000	74	38,000	77	37,000								
15	54	35,000	59	33,000	66	32,000	71	31,000	74	30,500	76	28,000						
20	40	26,000	49	25,500	59	25,000	65	24,500	69	24,000	72	23,000	77	8,750	77	8,500		
25	21	20,000	37	20,000	52	20,000	60	20,000	65	20,000	68	19,000	74	8,000	74	7,750	77	4,650
30			21	16,000	43	15,500	53	15,500	60	15,500	64	15,500	71	6,400	71	6,150	74	4,150
35					32	12,000	46	12,000	54	12,000	59	12,000	68	5,500	68	5,250	72	3,850
40					17	9,500	39	9,500	49	9,500	55	9,500	65	4,800	65	4,550	69	3,550
45							29	7,700	42	7,700	50	7,700	62	4,250	62	4,000	67	3,200
50							15	6,500	35	6,500	45	6,500	59	3,750	59	3,500	64	2,770
55									27	5,300	39	5,300	55	3,500	55	3,250	61	2,450
60									14	4,500	33	4,500	52	3,200	52	2,950	59	2,250
65											24	3,900	48	2,830	48	2,580	56	2,050
70											12	3,300	44	2,500	44	2,250	53	1,850
75													40	2,400	40	2,150	50	1,750
80													35	2,050	35	1,800	46	1,600
85													29	1,850	29	1,600	43	1,200
90																	40	750
Deductions for Stowed Jib																		
FIXED	720lbs		482lbs		360lbs		290lbs		240lbs		220lbs							
TELESCOPIC	900lbs		605lbs		450lbs		360lbs		300lbs		275lbs							

RATINGS ABOVE THE HEAVY LINE ARE BASED ON STRUCTURAL COMPETENCE AND NOT ON MACHINE STABILITY.

NOTE: Deductions must be made from rated loads for lifting accessories: fixed jibs, telescopic jibs, overhaul balls, load hooks, snatch blocks and load blocks.

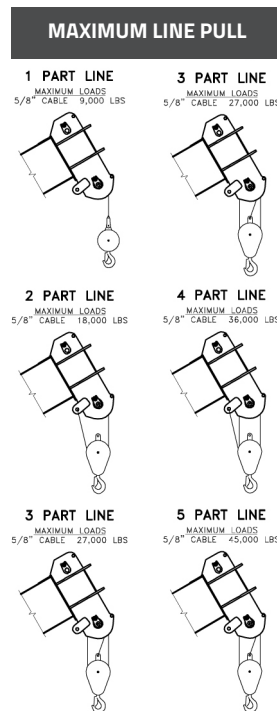
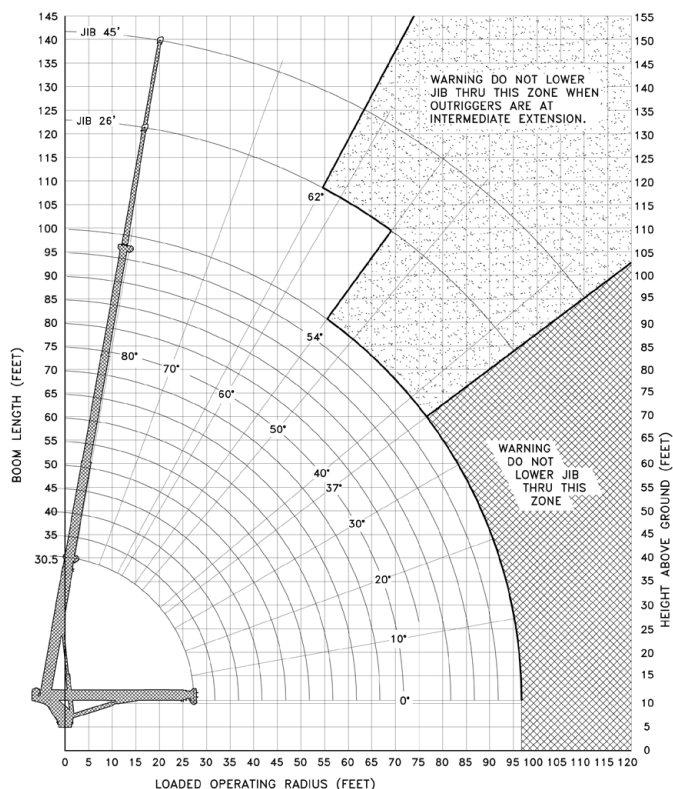


WHL35TC97

MAXIMUM RATED LOAD IN LBS. WITH OUTRIGGERS FULLY EXTENDED													FIXED JIB		26 / 45' TELESCOPIC JIB			
LOADED OPERATING RADIUS	LOADED BOOM ANGLE	RETRACTED BOOM LENGTH	LOADED BOOM ANGLE	BOOM LENGTH	LOADED BOOM ANGLE	BOOM LENGTH	LOADED BOOM ANGLE	BOOM LENGTH	LOADED BOOM ANGLE	BOOM LENGTH	LOADED BOOM ANGLE	EXTENDED BOOM LENGTH	LOADED BOOM ANGLE	FIXED JIB	LOADED BOOM ANGLE	JIB RETRACTED	LOADED BOOM ANGLE	JIB EXTENDED
FEET	<°	30' 2"	<°	45 ft	<°	60 ft	<°	75 ft	<°	90 ft	<°	96' 11"	<°	26 ft	<°	26 ft	<°	45 ft
10	71	47,000	77	44,000	80	23,500												
12	67	41,000	75	39,000	79	23,000	81	22,000										
15	60	35,000	71	32,000	76	22,500	79	22,000	80	21,500	81	13,000						
20	49	26,000	64	25,000	71	22,000	75	21,000	77	20,000	78	13,000						
25	34	20,000	56	20,000	65	19,500	71	18,000	74	16,000	75	13,000	78	8,000	78	7,400		
30			48	15,500	60	15,000	66	14,500	71	14,000	72	13,000	76	7,000	76	6,400	80	4,650
35			38	12,000	54	11,900	62	11,800	67	11,900	69	12,000	74	5,950	74	5,400	78	4,300
40			27	9,500	48	9,450	58	9,100	64	9,250	66	9,300	71	5,400	71	4,850	76	3,900
45					41	9,150	53	8,800	60	7,450	62	7,500	69	4,700	69	4,200	75	3,500
50					33	8,800	48	8,200	56	6,050	59	6,100	66	4,300	66	3,900	73	3,000
55					24	8,200	43	7,600	52	5,050	55	5,100	63	3,900	63	3,450	71	2,750
60							37	7,100	48	4,150	52	4,200	61	3,650	61	3,250	69	2,500
65							30	6,300	44	3,400	49	3,500	58	3,300	58	2,950	67	2,300
70									39	2,850	44	2,900	55	3,050	55	2,750		
75									34	2,350	39	2,400						
80									27	1,900	35	1,900						
85											29	1,600						
90											22	1,200						
Deductions for Stowed Jib																		
FIXED		720lbs		482lbs		360lbs		290lbs		240lbs		220lbs						
TELESCOPIC		900lbs		605lbs		450lbs		360lbs		300lbs		275lbs						

RATINGS ABOVE THE HEAVY LINE ARE BASED ON STRUCTURAL COMPETENCE AND NOT ON MACHINE STABILITY.

NOTE: Deductions must be made from rated loads for lifting accessories: fixed jibs, telescopic jibs, overhaul balls, load hooks, snatch blocks and load blocks.

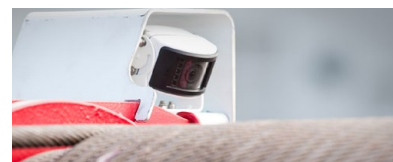


WHL45TC77/100



Out and down outriggers with independently operated horizontal extension cylinders and vertical jack cylinders, give the operator true stability on uneven surfaces or in tight locations.

The fully equipped cab provides the operator with a comfortable working environment in all weather conditions. Mounted on a tandem steer tri-drive rear axle chassis with fifth wheel, this crane is truly capable of heavy lifting and heavy hauling.



Remote Monitoring Video System

FEATURES & BENEFITS

- 45-ton lifting capacity (80,000lbs at 10' radius)
- 77' or 100' boom length (87' or 110' tip height) fully extended
- 3 section 77' fully proportional boom or 4 section 100' fully proportional boom
- 30.5' retracted length
- Continuous rotation
- Tapered rear subframe for fifth wheel installation
- Out and down outriggers
- Dual fan oil cooler
- 15,000 lb, 2 speed grooved drum planetary winch with integral brake for high efficiency and security, includes cable packer
- High strength box construction, welded booms for maximum strength to weight ratio
- A2B and LMI system with digital radio weight indicator

- Pre-wired boom and cab for work lights
- Remote Monitoring Video System - two cameras and one in-cab display (view right rear outriggers and winches)
- 40-ton four-sheave crane block (Easy Reeve)

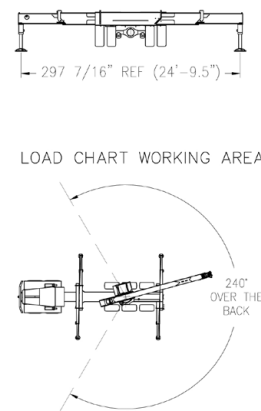
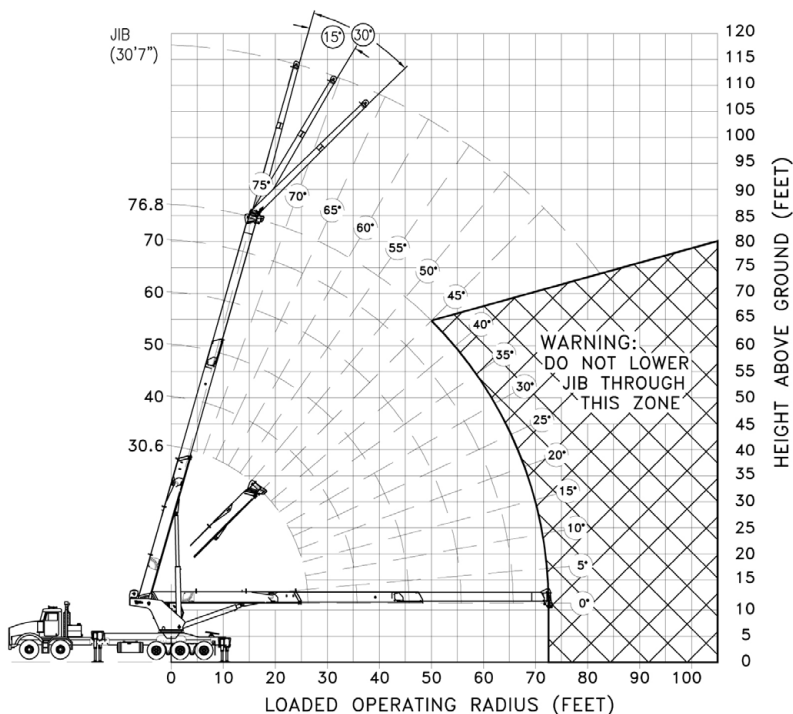
OPTIONAL EQUIPMENT

- 31' Orientable (0°, 15°, 30°) swing around jib, stows on side of boom
- 31'-51' Orientable (0°, 15°, 30°) two-stage swing around jib, stows on side of boom
- Hydraulic tank heater
- Boom lights
- Auxillary winch options, 12,000 lb or 15,000 lb winch
- Two-person self-levelling man basket
- Air Conditioning
- Remote radio crane controls

[illegible]

NOTE:

1. Deductions must be made from rated loads for lifting accessories: fixed jibs, telescopic jibs, overhaul balls, load hooks, snatch blocks and load blocks
2. Lift line ratings are based on 5/8" 18 x 19 rotation resistant wire rope with a minimum breaking strength of 45,400 lbs (sf>5).
3. Sheaves numbered from left to right when viewed facing the crane



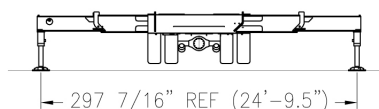
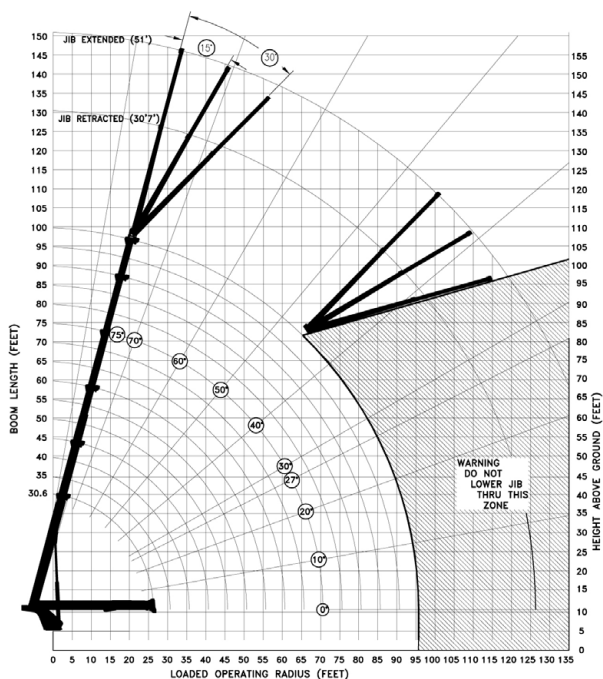
MAXIMUM LINE PULL

<p>1 PART LINE 9,000 LBS</p> <p>CRANE SHEAVES 1 2 3 4</p> <p>CRANE BLOCK</p>	<p>6 PART LINE 54,000 LBS</p> <p>CRANE SHEAVES 1 2 3 4</p> <p>THREE SHEAVE BLOCK</p>
<p>2 PART LINE 18,000 LBS</p> <p>CRANE SHEAVES 1 2 3 4</p> <p>SINGLE SHEAVE BLOCK OR TRIPLE SHEAVE BLOCK</p>	<p>7 PART LINE 63,000 LBS</p> <p>CRANE SHEAVES 1 2 3 4</p> <p>THREE SHEAVE BLOCK</p>
<p>3 PART LINE 27,000 LBS</p> <p>CRANE SHEAVES 1 2 3 4</p> <p>SINGLE SHEAVE BLOCK OR TRIPLE SHEAVE BLOCK</p>	<p>8 PART LINE 72,000 LBS</p> <p>CRANE SHEAVES 1 2 3 4</p> <p>FOUR SHEAVE BLOCK</p>
<p>4 PART LINE 36,000 LBS</p> <p>CRANE SHEAVES 1 2 3 4</p> <p>SINGLE SHEAVE BLOCK OR TRIPLE SHEAVE BLOCK</p>	<p>9 PART LINE 81,000 LBS</p> <p>CRANE SHEAVES 1 2 3 4</p> <p>FOUR SHEAVE BLOCK</p>
<p>5 PART LINE 45,000 LBS</p> <p>CRANE SHEAVES 1 2 3 4</p> <p>TWO OR THREE OR FOUR SHEAVE BLOCK</p>	<p>10 PART LINE 90,000 LBS</p> <p>CRANE SHEAVES 1 2 3 4</p> <p>FIVE SHEAVE CRANE BLOCK</p>

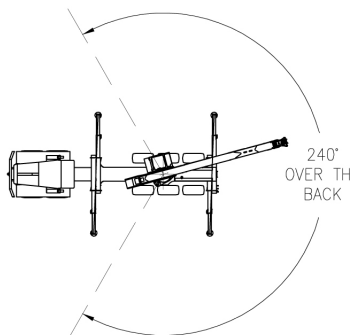
WHL45TC100

MAXIMUM RATED LOAD IN LBS. WITH OUTRIGGERS FULLY EXTENDED													
LOADED OPERATING RADIUS	LOADED BOOM ANGLE	RETRACTED BOOM LENGTH	LOADED BOOM ANGLE	BOOM LENGTH	LOADED BOOM ANGLE	BOOM LENGTH	LOADED BOOM ANGLE	BOOM LENGTH	LOADED BOOM ANGLE	BOOM LENGTH	LOADED BOOM ANGLE	BOOM LENGTH	EXTENDED BOOM LENGTH
FEET	<°	30.6'	<°	45'	<°	60'	<°	75'	<°	90'	<°	100'	
10	63	80,000	72	51,000									
12	58	70,000	69	51,000									
15	51	56,000	65	51,000	72	40,000							
20	37	42,000	58	42,500	67	38,000	71	27,500					
25	17	30,000	50	35,100	61	30,500	67	24,500	71	24,300	73	18,000	
30			41	29,300	56	27,100	63	21,500	68	21,300	70	17,500	
35			30	24,500	50	24,200	59	19,100	65	19,100	67	15,900	
40			11	20,700	43	21,200	54	17,000	61	17,000	64	14,100	
45					35	17,500	49	15,250	57	15,250	61	12,500	
50					26	14,500	44	13,800	53	13,800	57	11,300	
55					13	12,300	38	12,400	49	12,600	54	10,300	
60							31	10,500	45	10,700	50	9,400	
65							23	9,000	40	9,200	46	8,400	
70									35	8,000	42	7,900	
75									29	6,900	38	6,900	
80									21	6,000	33	6,000	
85											27	5,200	
90											20	4,600	
95	0	1,000	0	1,000	0	1,000	0	1,000	0	1,000	0	1,000	
Deductions for Stowed Jib													
FIXED		975lbs		675lbs		500lbs		425lbs		375lbs		325lbs	
TELESCOPIC		1,250lbs		850lbs		650lbs		550lbs		450lbs		400lbs	
FEET	<°	LB	<°	LB	<°	LB	<°	LB	<°	LB	<°	LB	
40	70	8,500											
45	68	8,250	71	6,800	74	5,900	71	5,600					
50	65	7,200	69	6,300	72	5,500	69	5,600					
55	63	6,600	66	5,650	69	5,000	67	5,500	72	4,700			
60	61	6,150	64	5,300	67	4,750	65	5,000	70	4,350			
65	58	5,500	61	4,800	64	4,400	63	4,500	68	4,050	72	3,500	
70	55	5,000	59	4,550	61	4,100	61	4,350	65	3,650	70	3,300	
75	53	4,600	56	4,200	58	3,850	58	3,900	63	3,400	67	3,050	
80	50	4,100	53	3,900	56	3,650	56	3,650	61	3,200	65	2,900	
85	47	3,700	50	3,650	53	3,450	54	3,400	59	3,000	63	2,750	
90			47	3,400	49	3,200	51	3,100	56	2,800	60	2,600	
95					46	3,050	49	2,900	54	2,650	57	2,400	
100							46	2,700	51	2,500	55	2,300	
105									48	2,300	52	2,200	
110									45	2,200	49	2,100	
115											46	2,000	
RATINGS ABOVE THE HEAVY LINE ARE BASED ON STRUCTURAL COMPETENCE AND NOT ON MACHINE STABILITY.													

- NOTE:**
1. Deductions must be made from rated loads for lifting accessories: fixed jibs, telescopic jibs, overhaul balls, load hooks, snatch blocks and load blocks
 2. Lift line ratings are based on 5/8" 18 x 19 rotation resistant wire rope with a minimum breaking strength of 45,400 lbs (sf>5).
 3. Sheaves numbered from left to right when viewed facing the crane



LOAD CHART WORKING AREA



MAXIMUM LINE PULL

1 PART LINE 9,000 LBS 	6 PART LINE 54,000 LBS
2 PART LINE 18,000 LBS 	7 PART LINE 63,000 LBS
3 PART LINE 27,000 LBS 	8 PART LINE 72,000 LBS
4 PART LINE 36,000 LBS 	9 PART LINE 81,000 LBS
5 PART LINE 45,000 LBS 	10 PART LINE 90,000 LBS

WHL45TC125

With a 45-ton lifting capacity, combined with 125' reach and a sub-frame suitable for fifth wheel installation, the Hydra-Lift WHL45TC125 Swing Cab Cranes offer heavy lifting and versatility.

Out and down outriggers with independently operated horizontal extension cylinders and vertical jack cylinders, give the operator true stability on uneven surfaces or in tight locations. The fully equipped cab provides the operator with a comfortable working environment in all weather conditions. Mounted on a tandem steer tri-drive rear axle chassis with fifth wheel, or single steer tri-drive rear axle chassis, or tandem steer tandem drive rear axle chassis without fifth wheel, WHL45TC125 Cranes are truly capable of heavy lifting and heavy hauling.



FEATURES & BENEFITS

- 45-ton lifting capacity (80,000 lbs at 10' radius)
- 135' tip height (fully extended)
- 4 section 125' fully proportional boom
- 38.6' retracted length
- Continuous 360° rotation
- Tapered rear subframe for fifth wheel installation
- Out and down outriggers
- Dual fan oil cooler
- Hydraulic tank heater
- Pre-wired boom and cab for LED work lights
- New cab design with electric controls
- Designed and tested to CSA Z-150 standards
- 15,000 lb, 2 speed grooved drum planetary winch with integral brake for high efficiency and security, includes cable packer
- High strength box construction, welded booms for maximum strength to weight ratio
- A2B and LMI system with digital radio weight indicator
- Remote Monitoring Video System: two cameras and one in-cab colour display (view right rear outriggers and winches)
- 40-ton four-sheave crane block (Easy Reeve)

OPTIONAL EQUIPMENT

- Boom lights
- Air conditioning

WHL45TC125 TRACTOR LOAD CHART Outriggers at Full Spread (240 ° over the back)

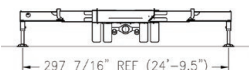
MAIN BOOM MAXIMUM RATED LOAD IN LBS.																
LOADED OPERATING RADIUS	LOADED BOOM ANGLE	RETRACTED BOOM LENGTH	LOADED BOOM ANGLE	BOOM LENGTH	LOADED BOOM ANGLE	BOOM LENGTH	LOADED BOOM ANGLE	BOOM LENGTH	LOADED BOOM ANGLE	BOOM LENGTH	LOADED BOOM ANGLE	EXTENDED BOOM LENGTH	LOADED BOOM ANGLE	EXTENDED BOOM LENGTH	LOADED BOOM ANGLE	EXTENDED BOOM LENGTH
FEET	°	38.6'	°	45'	°	60'	°	75'	°	90'	°	105'	°	120'	°	125'
10	69	80,000	72	53,000												
12	66	71,000	69	53,000	75	42,000										
15	61	60,000	65	52,000	72	39,700	75	32,000								
20	52	45,000	58	43,400	67	36,700	71	29,000	75	25,000						
25	41	38,000	50	35,900	61	34,100	67	27,000	71	23,800	74	20,000	76	16,600		
30	28	27,000	41	28,500	56	29,600	63	25,500	68	22,300	71	18,500	74	15,200	74	12,600
35			30	23,700	50	26,000	59	23,300	65	20,300	68	16,000	71	13,500	72	12,600
40			11	19,600	43	21,100	54	21,500	61	19,400	65	13,500	69	12,200	69	11,400
45					35	17,100	49	16,700	57	17,200	62	12,000	66	11,000	67	10,500
50					26	14,400	44	14,400	53	15,500	59	10,600	63	10,000	64	9,800
55					13	12,100	38	12,000	49	11,900	56	9,400	61	9,400	62	9,000
60							31	10,300	45	10,200	53	8,300	58	8,500	59	8,200
65							23	8,900	40	9,000	49	7,700	55	7,800	57	7,500
70							8	7,800	35	7,800	45	6,900	52	7,100	54	6,700
75									29	7,000	41	6,200	49	6,400	51	6,000
80									21	6,200	37	5,600	46	5,800	48	5,400
85									8	4,600	32	5,100	42	5,300	45	4,800
90											26	4,600	38	4,800	41	4,400
95											19	4,200	34	4,400	38	3,900
100											7	3,800	30	4,000	34	3,500
105													25	1,800	29	3,000
110													18	1,400	24	2,500
115													6	1,000	18	1,700
120															6	1,200
	0	22,000	0	18,000	0	11,000	0	6,800	0	3,600	0	2,800	0	1,000	0	1,000

RATINGS ABOVE THE HEAVY LINE ARE BASED ON STRUCTURAL COMPETENCE AND NOT ON MACHINE STABILITY.

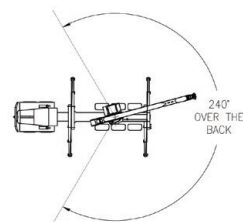
MAXIMUM LINE PULL

1 PART LINE 9,000 LBS 	6 PART LINE 54,000 LBS
2 PART LINE 18,000 LBS 	7 PART LINE 63,000 LBS
3 PART LINE 27,000 LBS 	8 PART LINE 72,000 LBS
4 PART LINE 36,000 LBS 	9 PART LINE 81,000 LBS
5 PART LINE 45,000 LBS 	10 PART LINE 90,000 LBS

- Lift line ratings are based on 5/8" 18x19 rotation resistant wire rope with a minimum breaking strength of 45,400lb (SF>5)
- Sheaves numbered from left to right when viewed facing the crane



LOAD CHART WORKING AREA



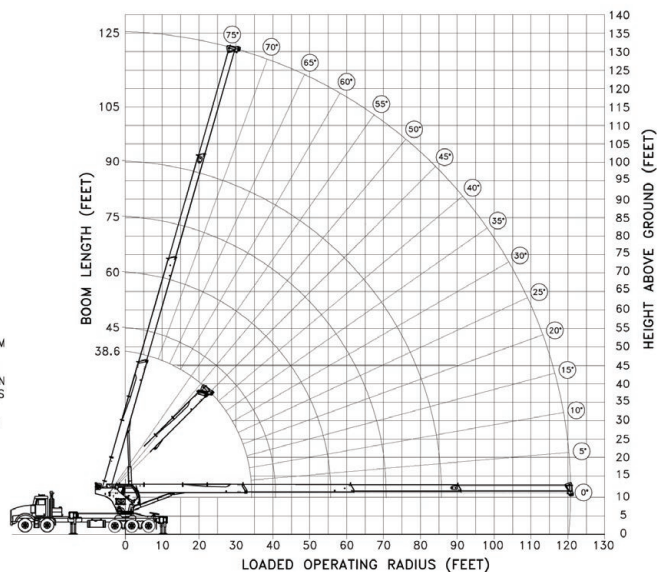
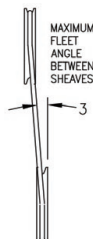
FOR ALL OTHER LOADING CONFIGURATIONS, REFER TO LOAD CHART BOOKLET

WARNING

- Actual load radius governs all loads and must be measured manually
- Do not allow boom deflection to increase the load radius
- Anti-two-block system must be in good working condition before operating the crane
- Keep a minimum of five wraps of load on the winch drum
- Do not exceed 10 parts of line

IMPORTANT

- Deductions must be made from rated loads for lifting accessories: Jib, Overhaul Ball, Load Hook, Snatch Block, Load Block, etc.
- Maximum outrigger pad load is less than 84,500 lbs.
- De-rate chart 2% of the rated load for every degree below -14 °F
- At -40 °F and below, the chart should be reduced to 50% of the rated load. Crane movement must be slow and shock loading avoided
- The crane should not be used at -58 °F or colder



WHL50TC77/100 TRACTOR



With a 50-ton lifting capacity, long reach and a sub-frame suitable for fifth wheel installation, the WHL50TC77/100 Tractor offers heavy lifting and versatility. Out and down outriggers with independently operated horizontal extension cylinders and vertical jack cylinders, give the operator true stability for heavy lifting and heavy hauling.

FEATURES & BENEFITS

- 50-ton lifting capacity (82,000lbs at 10' radius)
- 77' or 100' boom length (87' or 110' tip height) fully extended
- 3 section 77' fully proportional boom or 4 section 100' fully proportional boom
- 30.5' retracted length
- Continuous rotation
- Tapered rear subframe for fifth wheel installation
- Out and down outriggers
- Dual fan oil cooler
- 15,000 lb, 2 speed grooved drum planetary winch with integral brake for high efficiency and security, includes cable packer.
- High strength box construction, welded booms for maximum strength to weight ratio
- A2B and LMI system with digital radio weight indicator

- Pre-wired boom and cab for work lights
- Remote Monitoring Video System – two cameras and one in-cab display (view right rear outriggers and winches)
- 40-ton four-sheave crane block (Easy Reeve)

OPTIONAL EQUIPMENT

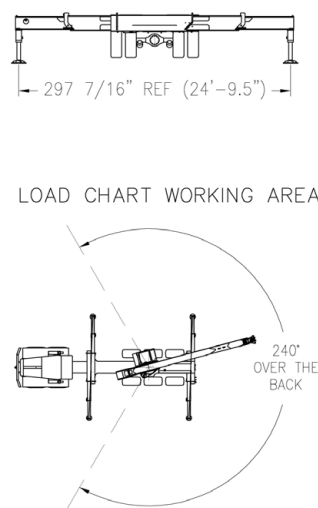
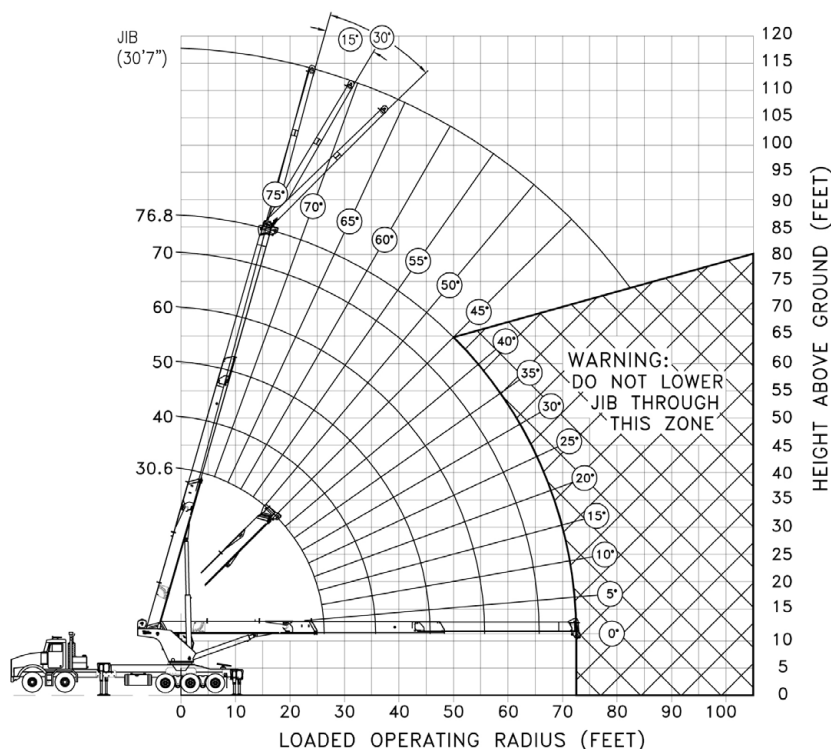
- 31' Orientable (0°, 15°, 30°) swing around jib, stows on side of boom
- Hydraulic tank heater
- Boom lights
- Auxillary winch options, 12,000 lb or 15,000 lb winch
- Two person self levelling man basket
- Air conditioning
- Remote radio crane controls

WHL50TC77 TRACTOR

MAXIMUM RATED LOAD IN LBS. WITH OUTRIGGERS FULLY EXTENDED																					
LOADED OPERATING RADIUS	LOADED BOOM ANGLE	RETRACTED BOOM LENGTH	LOADED BOOM ANGLE	BOOM LENGTH	LOADED BOOM ANGLE	BOOM LENGTH	LOADED BOOM ANGLE	BOOM LENGTH	LOADED BOOM ANGLE	BOOM LENGTH	LOADED BOOM ANGLE	BOOM LENGTH	LOADED BOOM ANGLE	EXTENDED BOOM LENGTH	LOADED OPERATING RADIUS	30'7" ORIENTABLE JIB					
																0°		15°		30°	
																BOOM ANGLE	LOAD	BOOM ANGLE	LOAD	BOOM ANGLE	LOAD
FEET	<°	30.6'	<°	40'	<°	50'	<°	60'	<°	70'	<°	74'	<°	76.8'	FEET	<°	LB	<°	LB	<°	LB
10	62	82,000	69	61,200	74	56,250									10						
12	58	73,000	66	61,200	71	56,250	74	50,000							12						
15	51	63,500	61	59,000	67	52,800	71	45,000	74	36,000					15						
20	37	47,500	53	47,500	61	42,000	66	38,000	70	31,000	72	30,000	72	28,000	20						
25	16	37,000	43	36,900	54	32,900	61	31,000	65	27,000	68	26,000	68	25,000	25						
30			31	29,300	47	29,000	55	27,500	61	24,000	64	23,200	64	22,000	30	71	8,500				
35			12	23,300	38	23,500	49	23,600	56	22,000	59	20,600	59	19,000	35	69	8,250	73	6,800		
40					28	18,300	43	18,400	51	18,500	54	18,100	55	16,700	40	66	7,000	70	6,300	73	5,700
45					11	14,700	35	14,800	45	14,900	49	14,700	50	13,400	45	63	6,400	67	5,600	70	5,000
50							26	12,200	39	12,300	44	12,000	45	11,000	50	60	5,700	64	5,100	67	4,750
55							10	10,100	32	10,200	38	10,000	40	10,000	55	56	5,100	61	4,600	64	4,300
60									24	8,600	31	8,600	33	8,700	60	53	4,500	57	4,200	60	3,900
65									9	7,300	22	7,300	26	7,400	65	50	4,000	54	3,900	56	3,650
70													15	6,300	70			50	3,500	53	3,400
75															75					49	3,100
	Deductions for Stowed Jib																				
		975lbs		675lbs		500lbs		425lbs		375lbs		350lbs		325lbs							
RATINGS ABOVE THE HEAVY LINE ARE BASED ON STRUCTURAL COMPETENCE AND NOT ON MACHINE STABILITY.																					

RATINGS ABOVE THE HEAVY LINE ARE BASED ON STRUCTURAL COMPETENCE AND NOT ON MACHINE STABILITY.

- NOTE:**
1. Deductions must be made from rated loads for lifting accessories: fixed jibs, telescopic jibs, overhaul balls, load hooks, snatch blocks and load blocks
 2. Lift line ratings are based on 5/8" 18 x 19 rotation resistant wire rope with a minimum breaking strength of 45,400 lbs (sf>5).
 3. Sheaves numbered from left to right when viewed facing the crane



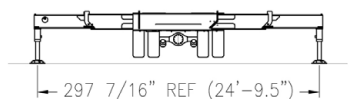
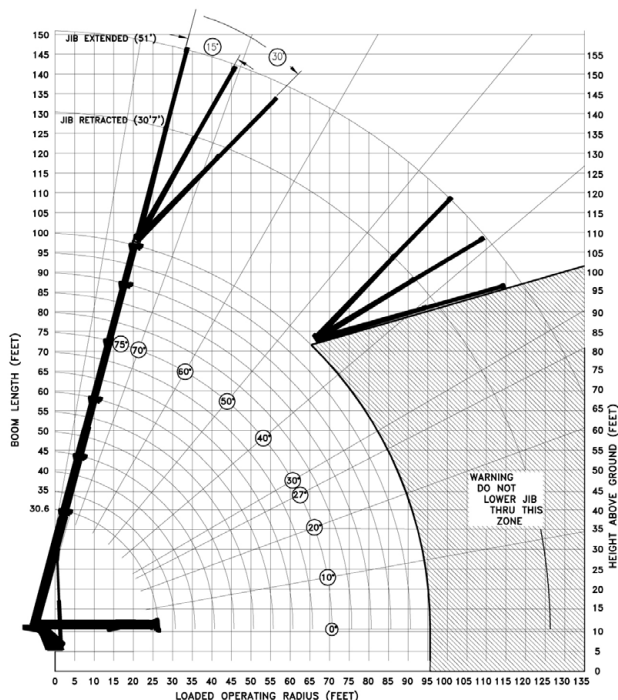
MAXIMUM LINE PULL	
1 PART LINE 9,000 LBS	6 PART LINE 54,000 LBS
2 PART LINE 18,000 LBS	7 PART LINE 63,000 LBS
3 PART LINE 27,000 LBS	8 PART LINE 72,000 LBS
4 PART LINE 36,000 LBS	9 PART LINE 81,000 LBS
5 PART LINE 45,000 LBS	10 PART LINE 90,000 LBS

WHL50TC100 TRACTOR

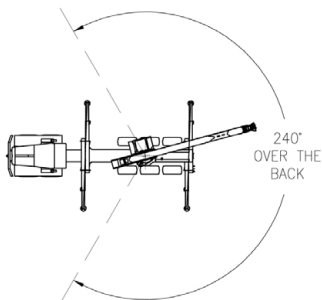
MAXIMUM RATED LOAD IN LBS. WITH OUTRIGGERS FULLY EXTENDED																										
LOADED OPERATING RADIUS	LOADED BOOM ANGLE	RETRACTED BOOM LENGTH	LOADED BOOM ANGLE	BOOM LENGTH	LOADED BOOM ANGLE	BOOM LENGTH	LOADED BOOM ANGLE	BOOM LENGTH	LOADED BOOM ANGLE	BOOM LENGTH	LOADED BOOM ANGLE	EXTENDED BOOM LENGTH	30'7" / 51' TELESCOPIC ORIENTABLE JIB AND 30'7" FIXED ORIENTABLE JIB (MAIN BOOM FULLY EXTENDED)													
													TELESCOPIC JIB RETRACTED AND FIXED JIB						TELESCOPIC JIB EXTENDED							
													0°		15°		30°		0°		15°		30°			
FEET	°	30.6'	°	45'	°	60'	°	75'	°	90'	°	100'	LOADED OPERATING RADIUS	BOOM ANGLE	LOAD	BOOM ANGLE	LOAD	BOOM ANGLE	LOAD	BOOM ANGLE	LOAD	BOOM ANGLE	LOAD			
10	63	82,000	72	51,000																						
12	58	72,000	69	51,000																						
15	51	61,800	65	51,000	72	40,000																				
20	37	46,500	58	47,500	67	38,000	71	27,500																		
25	17	38,500	50	36,500	61	30,500	67	24,500	71	24,300	73	18,000														
30			41	29,300	56	27,100	63	21,500	68	21,300	70	17,500		FEET	°	LB	°	LB	°	LB	°	LB	°	LB		
35			30	24,500	50	24,200	59	19,100	65	19,100	67	15,900														
40			11	20,700	43	21,200	54	17,000	61	17,000	64	14,100		40	70	8,500										
45					35	17,500	49	15,250	57	15,250	61	12,500		45	68	8,250	71	6,800	74	5,900	71	5,600				
50					26	14,500	44	13,800	53	13,800	57	11,300		50	65	7,200	69	6,300	72	5,500	69	5,600				
55					13	12,300	38	12,400	49	12,600	54	10,300		55	63	6,600	66	5,650	69	5,000	67	5,500	72	4,700		
60							31	10,500	45	10,700	50	9,400		60	61	6,150	64	5,300	67	4,750	65	5,000	70	4,350		
65							23	9,000	40	9,200	46	8,400		65	58	5,500	61	4,800	64	4,400	63	4,500	68	4,050		
70									35	8,000	42	7,900		70	55	5,000	59	4,550	61	4,100	61	4,350	65	3,650		
75									29	6,900	38	6,900	75	53	4,600	56	4,200	58	3,850	58	3,900	63	3,400			
80									21	6,000	33	6,000	80	50	4,100	53	3,900	56	3,650	56	3,650	61	3,200			
85											27	5,200	85	47	3,700	50	3,650	53	3,450	54	3,400	59	3,000			
90											20	4,600	90			47	3,400	49	3,200	51	3,100	56	2,800			
95													95					46	3,050	49	2,900	54	2,650			
Deductions for Stowed Jib													100							46	2,700	51	2,500	55	2,300	
Deductions for Stowed Jib													105										48	2,300	52	2,200
FIXED		975lbs		675lbs		500lbs		425lbs		375lbs		325lbs	110								45	2,200	49	2,100		
TELESCOPIC		1,250lbs		850lbs		650lbs		550lbs		450lbs		400lbs	115										46	2,000		
RATINGS ABOVE THE HEAVY LINE ARE BASED ON STRUCTURAL COMPETENCE AND NOT ON MACHINE STABILITY.																										

RATINGS ABOVE THE HEAVY LINE ARE BASED ON STRUCTURAL COMPETENCE AND NOT ON MACHINE STABILITY.

- NOTE:**
1. Deductions must be made from rated loads for lifting accessories: fixed jibs, telescopic jibs, overhaul balls, load hooks, snatch blocks and load blocks
 2. Lift line ratings are based on 5/8" 18 x 19 rotation resistant wire rope with a minimum breaking strength of 45,400 lbs (sf>5).
 3. Sheaves numbered from left to right when viewed facing the crane



LOAD CHART WORKING AREA



MAXIMUM LINE PULL	
1 PART LINE 9,000 LBS	6 PART LINE 54,000 LBS
2 PART LINE 18,000 LBS	7 PART LINE 63,000 LBS
3 PART LINE 27,000 LBS	8 PART LINE 72,000 LBS
4 PART LINE 36,000 LBS	9 PART LINE 81,000 LBS
5 PART LINE 45,000 LBS	10 PART LINE 90,000 LBS

WHL50TC77/100 TAXI



Hydra-Lift WHL50TC77/100 Swing Cab Cranes, with a 50 ton lift rating at 5 feet, are ideally suited for the most demanding heavy lift jobs. Out and down outriggers have independently operated horizontal extension cylinders and vertical jack cylinders, for true stability on uneven surfaces or in tight locations.

The fully equipped cab provides the operator with a comfortable working environment in all weather conditions. Mounted on a single steer tri-drive rear axle chassis, or tandem steer tandem rear axle chassis, the WHL50TC77/100 Crane delivers heavy lifting performance.

FEATURES & BENEFITS

- 50-ton lifting capacity (82,000lbs at 10' radius)
- 77' or 100' boom length (87' or 110' tip height) fully extended
- 3 section 77' fully proportional boom or 4 section 100' fully proportional boom
- 30.5' retracted length
- Continuous rotation
- 15,000 lb, 2 speed grooved drum planetary winch with integral brake for high efficiency and security, includes cable packer.
- Out and down outriggers
- Dual fan oil cooler
- High strength box construction, welded booms for maximum strength to weight ratio
- A2B and LMI system with digital radio weight indicator

- Pre-wired boom and cab for work lights
- Remote Monitoring Video System - two cameras and one in-cab display (view right rear outriggers and winches)
- 40-ton four-sheave crane block (Easy Reeve)

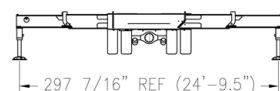
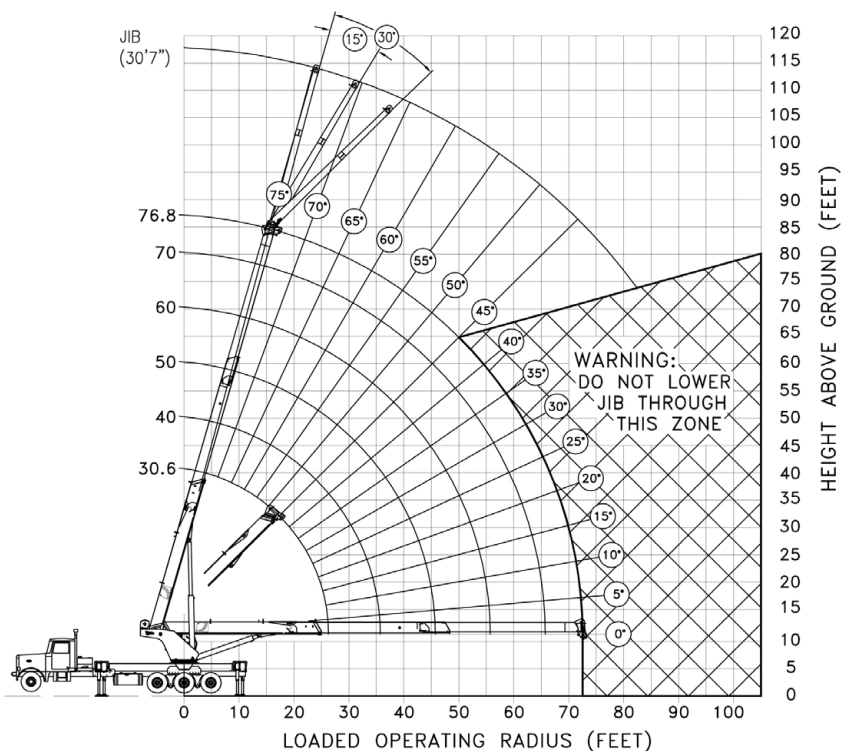
OPTIONAL EQUIPMENT

- 31' Orientable (0°, 15°, 30°) two-stage swing around jib, stows on side of boom
- Hydraulic tank heater
- Boom lights
- Auxillary winch options, 12,000 lb or 15,000 lb winch
- Two person self levelling man basket
- Air conditioning
- Remote radio crane controls

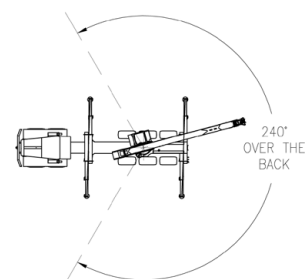
WHL50TC77 TAXI

MAXIMUM RATED LOAD IN LBS. WITH OUTRIGGERS FULLY EXTENDED																						
LOADED OPERATING RADIUS	LOADED BOOM ANGLE	RETRACTED BOOM LENGTH	LOADED BOOM ANGLE	BOOM LENGTH	LOADED BOOM ANGLE	BOOM LENGTH	LOADED BOOM ANGLE	BOOM LENGTH	LOADED BOOM ANGLE	BOOM LENGTH	LOADED BOOM ANGLE	BOOM LENGTH	LOADED BOOM ANGLE	EXTENDED BOOM LENGTH	LOADED OPERATING RADIUS	30'7" ORIENTABLE JIB						
																0°		15°		30°		
																BOOM ANGLE	LOAD	BOOM ANGLE	LOAD	BOOM ANGLE	LOAD	
FEET	^°	30.6'	^°	40'	^°	50'	^°	60'	^°	70'	^°	74'	^°	76.8'	FEET	^°	LB	^°	LB	^°	LB	
10	62	82,000	69	61,200	74	56,250									10							
12	58	74,000	66	61,200	71	56,250	74	50,000							12							
15	51	63,500	61	59,000	67	52,800	71	45,000	74	36,000					15							
20	37	47,500	53	47,500	61	42,000	66	38,500	70	31,000	72	30,000	72	28,000	20							
25	16	37,000	43	36,900	54	32,900	61	31,000	65	27,000	68	26,000	68	25,000	25							
30			31	28,200	47	28,500	55	27,500	61	24,000	64	23,200	64	22,000	30	71	8,500					
35			12	20,900	38	21,100	49	21,200	56	21,300	59	20,600	59	19,500	35	69	8,250	73	6,800			
40					28	16,400	43	16,500	51	16,600	54	16,600	55	16,700	40	66	7,200	70	6,300	73	5,700	
45					11	13,100	35	13,200	45	13,300	49	13,300	50	13,400	45	63	6,600	67	5,600	70	5,000	
50							26	10,800	39	10,900	44	10,900	45	11,000	50	60	6,150	64	5,100	67	4,750	
55							10	9,000	32	9,000	38	9,100	40	9,100	55	56	5,500	61	4,600	64	4,300	
60									24	7,600	31	7,600	33	7,600	60	53	5,000	57	4,200	60	3,900	
65									9	6,400	22	6,400	26	6,500	65	50	4,600	54	3,900	56	3,650	
70													15	5,500	70			50	3,500	53	3,400	
75															75					49	3,100	
			Deductions for Stowed Jib																			
		975lbs		675lbs		500lbs		425lbs		375lbs		350lbs		325lbs								
RATINGS ABOVE THE HEAVY LINE ARE BASED ON STRUCTURAL COMPETENCE AND NOT ON MACHINE STABILITY.																						

- NOTE:**
1. Deductions must be made from rated loads for lifting accessories: fixed jibs, telescopic jibs, overhaul balls, load hooks, snatch blocks and load blocks
 2. Lift line ratings are based on 5/8" 18 x 19 rotation resistant wire rope with a minimum breaking strength of 45400 lbs (sf>5).
 3. Sheaves numbered from left to right when viewed facing the crane



LOAD CHART WORKING AREA



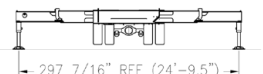
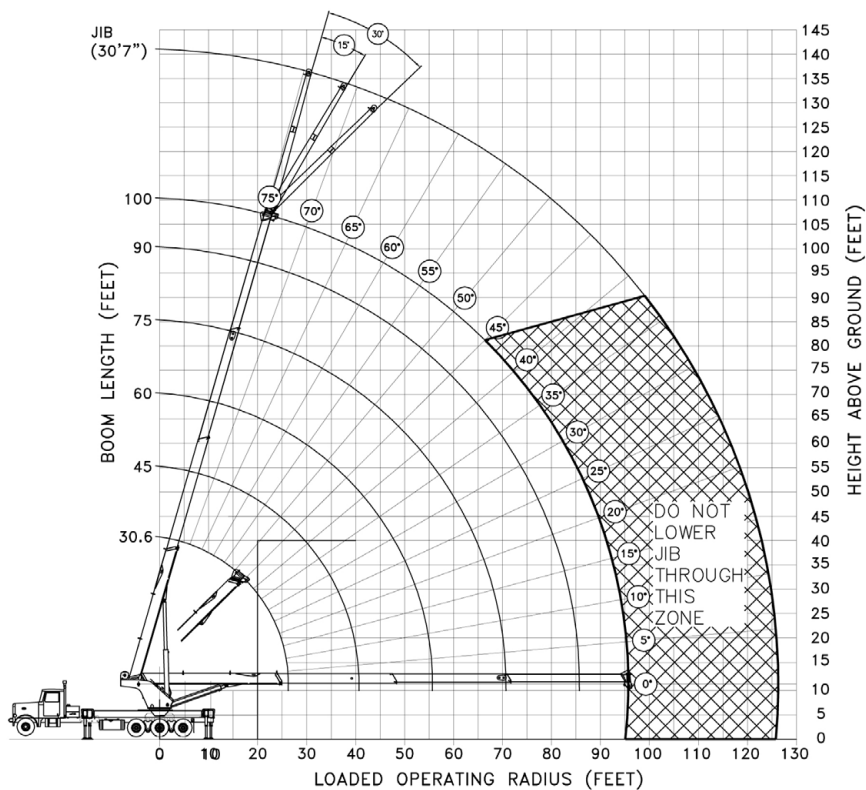
MAXIMUM LINE PULL	
1 PART LINE 9,000 LBS 	6 PART LINE 54,000 LBS
2 PART LINE 18,000 LBS 	7 PART LINE 63,000 LBS
3 PART LINE 27,000 LBS 	8 PART LINE 72,000 LBS
4 PART LINE 36,000 LBS 	9 PART LINE 81,000 LBS
5 PART LINE 45,000 LBS 	10 PART LINE 90,000 LBS

WHL50TC100 TAXI

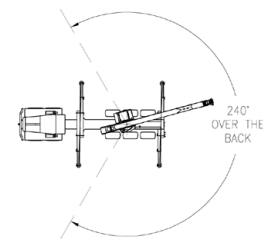
MAXIMUM RATED LOAD IN LBS. WITH OUTRIGGERS FULLY EXTENDED																			
LOADED OPERATING RADIUS	LOADED BOOM ANGLE	RETRACTED BOOM LENGTH	LOADED BOOM ANGLE	BOOM LENGTH	LOADED BOOM ANGLE	BOOM LENGTH	LOADED BOOM ANGLE	BOOM LENGTH	LOADED BOOM ANGLE	BOOM LENGTH	LOADED BOOM ANGLE	EXTENDED BOOM LENGTH	LOADED OPERATING RADIUS	30'7" ORIENTABLE JIB					
														0°		15°		30°	
														BOOM ANGLE	LOAD	BOOM ANGLE	LOAD	BOOM ANGLE	LOAD
FEET	°	30.6'	°	45'	°	60'	°	75'	°	90'	°	100'	FEET	°	LB	°	LB	°	LB
10	63	82,000	72	51,000									10						
12	58	72,000	69	51,000									12						
15	51	61,800	65	51,000	72	40,000							15						
20	37	46,500	58	47,500	67	38,000	71	27,500					20						
25	17	36,800	50	36,500	61	30,500	67	24,500	71	24,300	73	18,000	25						
30			41	29,000	56	27,250	63	21,500	68	21,300	70	17,500	30						
35			30	21,300	50	21,800	59	19,100	65	19,100	67	15,900	35						
40			11	16,400	43	16,900	54	17,000	61	17,000	64	14,100	40	70	8,500				
45					35	13,400	49	13,700	57	13,900	61	12,500	45	68	8,250	71	6,800	74	5,900
50					26	10,900	44	11,200	53	11,300	57	11,300	50	65	7,200	69	6,300	72	5,500
55					13	9,000	38	9,200	49	9,400	54	9,500	55	63	6,600	66	5,650	69	5,000
60							31	7,700	45	7,900	50	7,900	60	61	6,150	64	5,300	67	4,750
65							23	6,500	40	6,600	46	6,700	65	58	5,500	61	4,800	64	4,400
70									35	5,600	42	5,700	70	55	5,000	59	4,550	61	4,100
75									29	4,700	38	4,800	75	53	4,600	56	4,200	58	3,850
80									21	4,000	33	4,100	80	50	4,100	53	3,900	56	3,650
85											27	3,400	85	47	3,700	50	3,650	53	3,450
90											20	2,900	90			47	3,400	49	3,200
95	0	1,000	0	1,000	0	1,000	0	1,000	0	1,000	0	1,000	95					46	3,050
	Deductions for Stowed Jib																		
		975lbs		675lbs		500lbs		425lbs		375lbs		325lbs							
RATINGS ABOVE THE HEAVY LINE ARE BASED ON STRUCTURAL COMPETENCE AND NOT ON MACHINE STABILITY.																			

RATINGS ABOVE THE HEAVY LINE ARE BASED ON STRUCTURAL COMPETENCE AND NOT ON MACHINE STABILITY.

- NOTE:**
1. Deductions must be made from rated loads for lifting accessories: fixed jibs, telescopic jibs, overhaul balls, load hooks, snatch blocks and load blocks
 2. Lift line ratings are based on 5/8" 18 x 19 rotation resistant wire rope with a minimum breaking strength of 45400 lbs (sf>5).
 3. Sheaves numbered from left to right when viewed facing the crane



LOAD CHART WORKING AREA



MAXIMUM LINE PULL	
1 PART LINE 9,000 LBS	1 PART LINE 9,000 LBS
2 PART LINE 18,000 LBS	2 PART LINE 18,000 LBS
3 PART LINE 27,000 LBS	3 PART LINE 27,000 LBS
4 PART LINE 36,000 LBS	4 PART LINE 36,000 LBS
5 PART LINE 45,000 LBS	5 PART LINE 45,000 LBS

WHL CRANE CAB



Utilizing customers' and operators' feedback, the Weldco Hydra-Lift crane cab has been extensively redesigned for enhanced safety, visibility, function, comfort, and appearance.

FEATURES & BENEFITS

- Improved comfort and ergonomics
- Improved heater and heat distribution in cab
- Lighter weight cab design
- Curved glass window with improved forward and overhead visibility
- Overall improved LED lighting
- All glass sliding door allows easy cab entrance and exit
- Easily removeable emergency exit provided through rear window
- Integrated rear fuel tank for heater with side fill access
- Removable rear panel to accommodate optional A/C unit
- Improved location of Load Moment Indicator and radio mounts
- Fully adjustable high back seat and joystick pod mounts provide optimal operator comfort and ergonomics; joystick pods tilt back to allow for more room in cab
- Integrated front dash with windshield defrost louvers and adjustable heat and A/C louvers (if applicable)



OPTIONAL EQUIPMENT & ACCESSORIES

WORK LIGHT PACKAGES

HL 30, WHL 23 CRANES

This work light package has four LED floodlights mounted on a light bar at the tip end of the outer boom. Wiring is enclosed in steel conduit welded to the cab side of the boom. Lights are controlled by a switch on the control console.



WHL 40, 45 AND 50 CRANES

These work light packages have eight LED floodlights. Four are mounted on a light bar at the tip end of the outer boom, wiring is enclosed in steel conduit bolted to the cab side of the boom. Two lights are mounted on the front of the cab, below the windshield. Two more are mounted on the rear of the cab, just below the roof line. The boom mounted lights are controlled by a rocker switch and the four cab mounted lights are controlled by a second rocker switch. Both switches are on the control panel in the cab.



ROOSTER SHEAVE ASSEMBLY

The rooster sheave is a pin-on rigging accessory with a composite sheave identical to the boom tip sheaves. It is required if rigging more than six parts of line, or when an auxiliary winch is used. A second ATB transmitter can easily be bolted to it when used with an auxiliary winch. It is a complete install kit with easily removable pins.



AUXILIARY WINCH OPTION WITH ROOSTER SHEAVE

This option gives the operator a second winch to operate as a tag line. The second winch is a 12000 lb single speed unit, mounted directly behind the main winch. A down haul ball is included.

CRANE BLOCKS

30 TON CRANE BLOCK - TRIPLE SHEAVE BLOCK

- 30 ton working load limit
- Approximate weight: 444 lbs
- Enables our cranes to be rigged with up to 6 parts of line
- Optional rooster sheave, up to 7 parts of line can be rigged.

25 TON CRANE BLOCK - DOUBLE SHEAVE BLOCK

20 TON CRANE BLOCK - DOUBLE SHEAVE BLOCK

40 TON CRANE BLOCK - FOUR SHEAVE, EASY REEVE HOOK BLOCK

HYDRAULIC OIL HEATER

A 15 tube stainless steel heat exchanger is installed in the hydraulic tank. Heat from the truck's cooling system is used to pre-heat the hydraulic oil during cold weather operation.

HYDRAULIC OIL COOLER

This option is a must have for any crane that will be using its hydraulic system without cool down periods, such as continuous operation of a pile driver or a concrete ladle. The oil cooler is mounted on the curb side of the turret and features twin electric fans which are automatically controlled with a thermostat set to engage at 140° F. The fans can also be manually controlled with a rocker switch, located inside the cab, to operate at temperatures below 140°. Return oil from all the control valves flows through the cooler before returning to the oil reservoir. The cooler is equipped with a 60 psi bypass relief valve for internal protection.



TWO MAN WORK PLATFORM

This self leveling work platform adds versatility to a crane by converting it into an elevating platform for accomplishing work that would normally require an aerial device. Installation is simple, requiring only one or two pins.



JIBS

- ❶ **21' SWING AROUND JIB - SINGLE STAGE**
HL 30 CRANES

- ❷ **26' SWING AROUND JIB - SINGLE STAGE**
WHL 23, WHL 35, WHL 40 CRANES

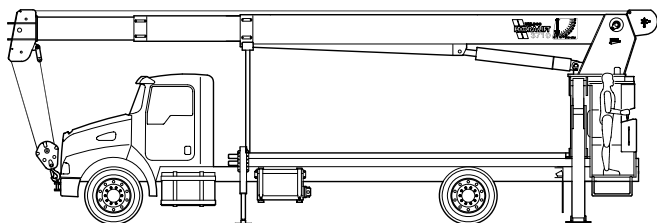
- ❸ **26'/45' SWING AROUND JIB - TWO STAGE**
WHL 23, WHL 35, WHL 40 CRANES

- ❹ **31' (0,15,30°) SWING AROUND JIB INSTALLED - SINGLE STAGE**
WHL45, WHL 50 CRANES

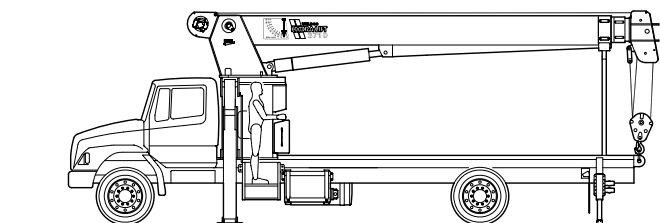
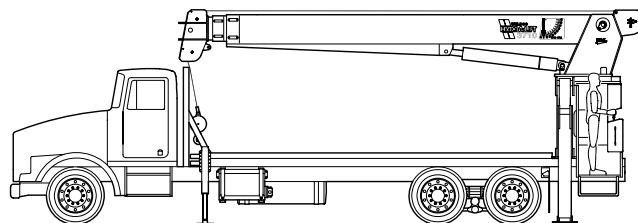
WHL 4500 PILE DRIVER

Quickly and easily convert your Weldco Hydra-Lift crane application into a pile driver application and vice versa, onsite. The addition of a pile driving hydraulic circuit with heavy duty quick couplers for pressure, return, and case drain, facilitates this quick field conversion of the WHL crane. 55.5ft leads easily accept 40ft lengths of standard piling material.

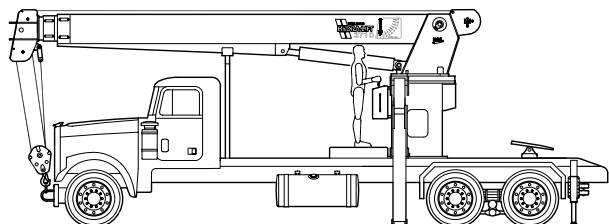
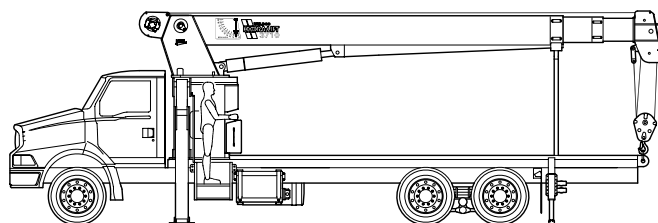
MOUNTING OPTIONS



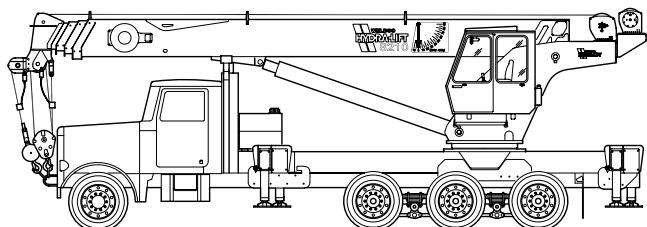
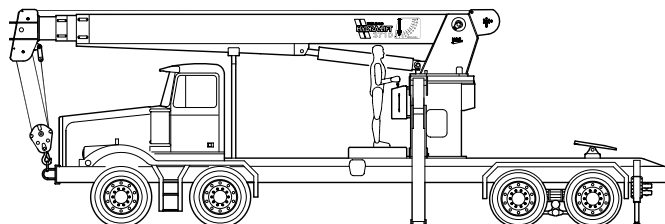
REAR MOUNT



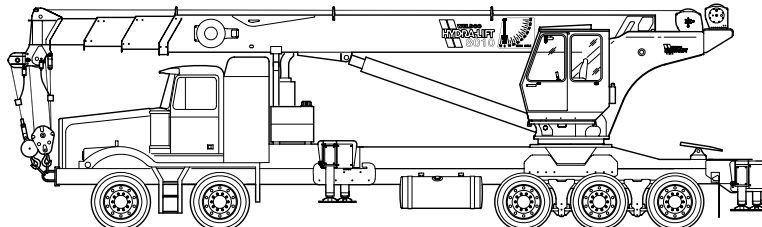
DECK MOUNT



TRACTOR MOUNT



SWING CAB TAXI MOUNT



SWING CAB TRACTOR MOUNT

CUSTOM RIG UPS

Weldco Hydra-Lift offers complete rig-up packages and installation.

Please contact us for more information: 1-800-661-0378





12155 - 154 Street
Edmonton, AB Canada T5V 1J3
Toll Free: 1 800 661 0378 | Fax: 780 455 6770

www.weldco-hydralift.com

Revised June 22, 2022