



ICE&SNOW
PRODUCTS



WELDCO-BEALES MFG.
SPECIALISTS IN ATTACHMENT DESIGN AND MANUFACTURING
www.weldco-beales.com

Attaching Value – DESIGNING AND MANUFACTURING PREMIUM HEAVY-DUTY ATTACHMENTS, SPECIALIZED TO THE DEMANDING REQUIREMENTS OF EACH MACHINE'S JOB AND CAPABILITIES.

Weldco-Beales Mfg. (WBM) proudly *attaches value* to the forestry, construction, road maintenance, mining and resource industries.



Since 1945, WBM has attained a strong wealth of knowledge, experience, skills and technologies to build value for its customers. This enables the company to continuously create and deliver unique solutions. With WBM, customers can be confident that they will always receive the highest quality products.



www.weldco-beales.com

CONTENTS

Motor Grader Attachments

Integral Lift Group	4
KAT Master Hitch	5
Manual Angle Blades.....	6
Hydraulic Angle Blades.....	7
Straight Blades.....	8
U/V Angle Blades.....	9
Snow Blades	10
Cutting Edge Rack	10
Moldboard Endgates	11
Snow Wings	12
One Way Plows.....	18
V-Plows.....	19

Wheel Loader Attachments

Hydraulic Angle Snow Blades	20
Hydraulic Winged Snow Blades	21
U/V Angling Blades.....	22
Snow Wing and Blades	23
Runway Plows (Ramp Hogs).....	24
One Way Plows.....	24
Snow Buckets & Baskets	25
Spreader Buckets	26

Additional Attachments

Scraper V-Plows	27
Ice/Snow Scarifiers.....	27
Power Brooms	27

Truck Attachments

Snow Wings and Plows	28
----------------------------	----

Complete Product Listing	30
---------------------------------------	-----------

MOTOR GRADER ATTACHMENTS

LIFT GROUPS



INTEGRAL LIFT GROUP

The WBM Integral Lift Group utilizes a direct pin-on connection between the attachment and lift group linkage. This lift group is an economical alternative to the KAT Master Hitch lift group system.

FEATURES & BENEFITS

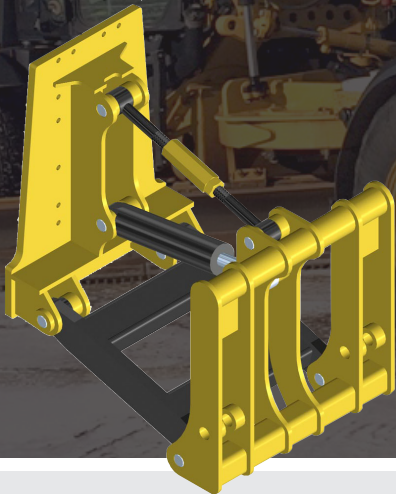
- Bolts to grader front mounting plate
- Durable and rugged design
- Parallelogram linkage operation
- Reinforced pivot points
- Bolts directly to OEM grader mount plate without additional mounting hardware
- Long-lasting linkage design withstands side or heavy dozing loads
- Parallelogram operation maintains pitch angle while raising and lowering attachment
- Durable pin pivot design increases life expectancy

STANDARD EQUIPMENT

- One heavy-duty hydraulic cylinder
- One adjustable pitch strut
- 2500 psi cushion valve

KAT MASTER HITCH

The WBM Motor Grader KAT (Kwik-a-Tach) Master Hitch Lift Group is a quick and convenient way of switching attachments on a Motor Grader. Attachments that are lugged with WBM quick coupler lugging can be either hydraulically or manually attached within minutes.



FEATURES & BENEFITS

- Bolts to grader front mounting plate
- Durable and rugged design
- Large viewing windows in KAT
- Parallelogram linkage operation
- Common KAT hook-up points
- Bolts directly to (OEM) grader mount plate without additional hardware
- Durable linkage design withstand side or heavy dozing loads
- Provides increased operator visibility
- Parallelogram operation maintains pitch angle while raising and lowering attachment
- Offers increased interchangeability between attachments and grader classes

STANDARD EQUIPMENT

- One heavy-duty hydraulic cylinder
- Manual Kwik-a-Tach pins
- One adjustable pitch strut
- 2500 psi cushion valve

OPTIONAL EQUIPMENT

- Hydraulic Kwik-a-Tach lugs available in kit form

BLADES

MANUAL ANGLE BLADES

WBM Motor Grader Manual Angle Blades can be used for snow removal, land leveling, grading and dozing. The blade can be 'pinned' straight, 25° left, or 25° right. The design utilizes an 'on-board' link that is stored on the blade when in the straight position, and 'pinned' in place when angled left or right.



FEATURES & BENEFITS

- Proven and tested moldboard profiles
- Varying moldboard widths and heights (1 ft increments from 10 ft)
- 25° angle capability, left or right
- Quick-change angle pins and link
- Adjustable skid shoes
- Centre drilled reversible bolt-on edges
- Durable design
- Cost-effective alternative to a Hydraulic Angle Blade
- Maximum usage of bolt-on edge material
- Moldboard profiles provide optimum material 'rolling' or carrying characteristics
- Blade widths designed in 12" increments from 120" and up
- Change from left to right to straight quickly by removing pins and positioning link
- Skid shoes increase cutting edge wear life

STANDARD EQUIPMENT

- KAT lugging
- Bolt-on reversible cutting edges to promote wear life of the blade

OPTIONAL EQUIPMENT

- Wear resistant cutting edges (ie: carbide) for extreme and high wear conditions





HYDRAULIC ANGLE BLADES

WBM Hydraulic Angle Blades are used in applications where snow removal, land levelling, grading and dozing are required. With 30° of hydraulic left or right angle capability, the operator is provided with increased material control during conventional dozing operations.

FEATURES & BENEFITS

- Proven and tested moldboard profiles
- Maximum blade widths and heights to match application and machine capability
- Dual hydraulic angling cylinders provide 30° of angle left or right
- Adjustable skid shoes
- Centre drilled reversible bolt-on edges
- Available in KAT or Integral Lift group configurations
- Offer versatility and increased productivity
- Moldboard profiles provide optimum material 'rolling' or carrying characteristics
- Blade widths designed in 12" increments from 120" and up depending on machine width and application
- Dual hydraulic cylinders provide positive angling force to hold the blade in the desired position
- Skid shoes increase cutting edge wear life and increase grading characteristics
- Maximum usage of bolt-on edge material

STRAIGHT BLADES

WBM's Motor Grader Straight Blades are used in applications such as snow removal, grading, land levelling or dozing. The straight blade is available in widths and heights to match most applications and machine sizes.



FEATURES & BENEFITS

- Proven and tested moldboard profiles
- Varying moldboard widths (1 ft increments from 10 ft) and heights
- Adjustable skid shoes
- Centre drilled reversible bolt-on edges
- Trouble-free design with rugged durability
- Moldboard profiles provide excellent grading and material carrying characteristics
- A wide range of blade widths and heights maximize machine capabilities and productivity, without compromising material carrying capacity
- Adjustable skid shoes give a specified cutting depth, increased stability when grading, and increased cutting edge life
- Trouble free design supplies a durable, value added attachment for all straight dozing applications

STANDARD EQUIPMENT

- Abrasion resistant adjustable skid shoes
- Bolt-on reversible cutting edges promote a longer wear life of the blade
- KAT hook-up

OPTIONAL EQUIPMENT

- Wear resistant cutting edges (ie: carbide) for extreme and high wear conditions

U/V ANGLE BLADES

WBM's U/V Angle Blades are the most versatile blade available for a motor grader. It is capable of operating as a straight blade, angle blade, u-blade or v-plow. It is used extensively for snow removal and is extremely useful due to its functionality. Auxiliary hydraulics are utilized along with an optional diverter valve to enable operator controlled blade changes between all four configurations. The U/V Angling Blade is available in either KAT Master Hitch or Integral Lift Group designs.



FEATURES & BENEFITS

- Reinforced tubular pivot frame
- Proven and tested moldboard profiles
- Varied moldboards widths and heights
- Rugged tubular pivot frame design increases durability and work life to match heavy snowfall removal operations
- Moldboard profiles provide excellent snow removal or carrying characteristics
- 130° U-blade angle supplies exceptional snow carrying capabilities to push or pile snow
- 230° V-blade angle provides outstanding 'piercing' traits in high drift or large accumulation snow areas
- Side casting or windrowing is easily done utilizing the 25° blade angle position
- Moldboard widths from 10 to 13 ft match most machine capacities and requirements

STANDARD EQUIPMENT

- Adjustable skid shoes increase stability and cutting edge life
- Quick coupler lugging
- Bolt-on reversible cutting edges to promote a longer wear life of the blade
- Two heavy duty angle cylinders

OPTIONAL EQUIPMENT

- High abrasion cutting edges (ie: carbide) for extreme and high wear conditions
- $\pm 3^\circ$ oscillation to follow uneven road conditions
- Hydraulic diverter valve kit/accumulator



Blade shown above may have optional equipment.



SNOW BLADES

WBM Motor Grader Snow Blades are designed with an effective curvature that increases capacity and allows the 'rolling' action required to efficiently clear snow with ease.

FEATURES & BENEFITS

- Trip style moldboard design with a 42" standard height
- Hydraulically angled 30° in either direction
- Equipped with side to side oscillation, fore/aft float capabilities and skid shoes to allow the blade to follow irregular surface contours
- Equipped with safety flags on each end of the blade
- 12' standard width (other blade widths available in 12" increments)
- Various hook-up (lugging) configurations available
- Utilizes center-drilled reversible bolt-on cutting edges with bolt-on curb protectors and bolt-on blade saver guards to maximize cutting edge life

Note: also available without moldboard trip and float or oscillation features

CUTTING EDGE RACK

WBM's Cutting Edge Rack with Toolbox provides safe and easy storage of replacement grader moldboard bolt on edges, tools and spare parts.

FEATURES & BENEFITS

- Quick hook up to grader front lift group with KAT lugs
- Includes a sturdy metal toolbox for secure storage of tools and spare parts
- Adjustable working height provided by the lift group hydraulics
- Standard compatibility to fit on any machine with a WBM front lift group; customizable to fit non-WBM lift groups





BOLT-ON MOUNT STYLE

MOLDBOARD ENDGATES

WBM's hydraulically operated Moldboard Endgates allow you to carry snow past driveways, sidewalks, streets and crossroads.

FEATURES & BENEFITS

- Rugged design with either a quick bolt-on mount system or fixed weld-on mounts
- Eliminates the need for a second machine to clean up after the motor grader
- Lifts fully out of the way for full use of grader moldboard when required
- Large snow holding and carrying capacity

***Note:** units require one hydraulic circuit to operate the moldboard endgate raise/lower function.*

SPECIFICATIONS

Bolt-on Mount Style Weight (complete assembly)	680 lbs
Weld-on Style Mount Weight (complete assembly)	630 lbs
Cutting Edge Size	¾" x 24" (maximum)

Values above can vary depending on motor grader factory moldboard size and endgate length

SNOW WINGS



MASTED SNOW WINGS

WBM's Hydraulic Masted Snow Wings are an excellent tool for clearing snow from roadways. Snow is transferred from the grader moldboard to the snow wing and 'cast' into the ditch. Snow Wings are also used in early snowfall conditions to clear the ditch of high grass or debris to control drifting conditions and for 'benching' operation in high snowfall areas.

FEATURES & BENEFITS

- Mechanical and hydraulic float
- Blade curvature geometry greatly improves 'winging' characteristics for superior snow-clearing
- Positive down pressure can be applied along entire moldboard for applications such as ice removal
- Front and rear mounts with a compact mast assembly offer greater visibility
- Spring loaded shock absorbing push pole can be manually adjusted to change the sweep angle of the wing to the optimum position for all conditions
- Blade height is hydraulically controlled and allows down pressure to be applied to the tip in normal winging conditions, as well as lifting the blade to its transport position

STANDARD EQUIPMENT

- 12 ft 'performance' moldboard
- 38" bench height
- Hydraulic front mast
- Manual extendable pushpole

OPTIONAL EQUIPMENT

- Manual or hydraulic moldboard pitch control
- Hydraulic extendable pushpole
- Hydraulic elevating rear mast (52" bench height)



WBM's Mastless Snow Wing (MSW100/200) design provides an additional safety aspect with the ability to open both doors of the cab when the wing is mounted.

MASTLESS SNOW WINGS (MSW 100/200)

Mechanical and hydraulic float at the discharge (toe) and mechanical float at the intake (heel) of the moldboard give an increased life cycle and easier operator usage when experiencing uneven or rough terrain. The MSW's compact design significantly improves the grader's blade angle during operation, allowing for full machine articulation.

FEATURES & BENEFITS

- Exceptional operator visibility
- Unobstructed view to grader moldboard
- Increased safety
- Mechanical and hydraulic float
- Maximizes operator visibility, increasing safety awareness in traffic
- Efficient moldboard design
- Superior grader control and maneuverability in congested areas
- Moldboard geometry greatly improves 'winging' characteristics for superior snow-clearing
- Two-piece rear mount enables bumper to remain on during summer operation

STANDARD EQUIPMENT

- 12 ft 'performance' moldboard
- 30" bench height
- Hydraulic front lift mechanism
- Manual extendable pushpole

OPTIONAL EQUIPMENT

- Manual Adjustable Moldboard Pitch Control
- Hydraulic Extendable Pushpole
- Hydraulic Adjustable Moldboard Pitch Control



Shown with optional hydraulic extending pushpole.



MASTLESS SNOW WINGS (MSW102)

WBM's New Mastless Snow Wings (MSW102) provide an industry leading 40" benching height capability. With the use of one hydraulic control, the operator can now parallel lift the snow wing moldboard from the level ground position to the maximum benching height position.

FEATURES & BENEFITS

- Maximum operator visibility, safety and response times
- Unprecedented 40" benching height capability
- NEW dual rubber cushioned pushpole lift stops to provide a controlled and positive stop every time the snow wing moldboard is raised
- Combination mechanical/hydraulic float at the discharge (toe) end of the moldboard and mechanical type float at the intake (heel) for prolonged service life and greater flexibility over rough/uneven terrain
- Simplified and compact rear mount allows reduced installation and removal times
- Increased transport height for moldboard heel eliminates contact with curbs or roads while traveling
- Stronger front mount upper H-link design to handle heavy loads
- Revised moldboard cutting edge angle allows snow wing to glide easier across all terrain



STANDARD EQUIPMENT

- 12' durable performance moldboard
- 40" benching height
- Fully hydraulic lift
- Manual extendable pushpole with shear pin protection
- Adjustable dual pushpole stops

OPTIONAL EQUIPMENT

- Manually adjustable moldboard pitch control
- Hydraulically adjustable moldboard pitch control
- Hydraulically extendable pushpole
- Carbide cutting edges for snow wing moldboard

	MSW102
Blade Height (Front-Rear)	33" - 44"
Cutting Edge	8" x $\frac{3}{4}$ " top drilled
Moldboard Cutting Edge Angle	70°
Travel Below Level Ground Position (front - rear) *	3" - 50"
Float Travel Distance (front-rear)	6" - 20"
Maximum Level Benching Height *	40"
Sweep Angle Range (from grader centerline)	32° - 47°
Mount Ground Clearance *	17.9"
Transport Width (Cat 140M/160M) *	114"
Transport Height Range (pushpole retracted to pushpole extended) *	159"-181"
ATTACHMENT WEIGHT	3,820 lbs

* Can vary with tire size/type and cutting edge type



MASTLESS SNOW WINGS (MSW202)

The WBM MSW202 Mastless Snow Wing, designed for motor graders, provides a 48" maximum benching height capability. With the use of one hydraulic control, the operator can parallel lift the snow wing moldboard from the level ground position to the maximum benching height position.

Compared to the previous MSW200 model, the MSW202 also has an increased moldboard heel to ground clearance in the transport position by 44" and increased rear mount to ground line clearance by 9.5".



FEATURES AND BENEFITS

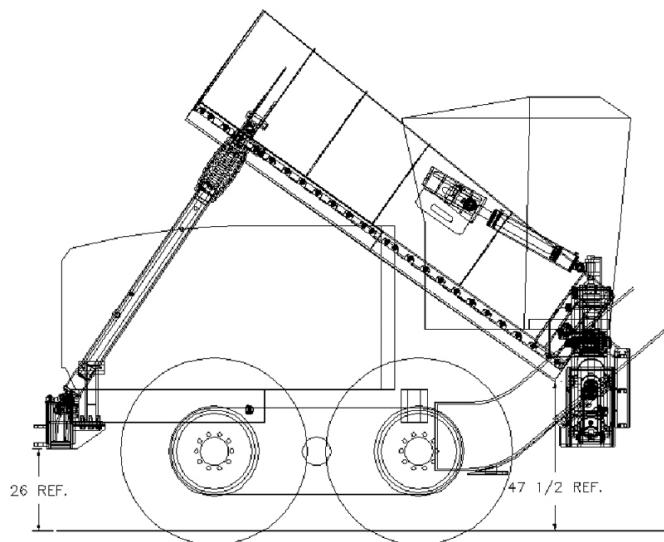
- Simple installation with fewer hoses required on the rear of the grader on standard pushpole models
- Improved dual pushpole stops
- Increased benching height and attachment ground clearance for improved versatility in all conditions
- Elevated transport position to allow more ground clearance and eliminate the need to trim the corner of the cutting edge
- Snow wing moldboard uses same cutting edges as previous model so no need to carry extra parts inventory
- Improved support to snow wing moldboard and cutting edges
- Model also available for MG10 sized Motor Graders

STANDARD SPECIFICATIONS

- 12' durable performance moldboard
- 48" benching height
- Fully hydraulic lift
- Manual extendable pushpole with shear pin protection
- One-piece rear mount with single pushpole connection

OPTIONS

- Manually adjustable moldboard pitch control
- Hydraulically adjustable moldboard pitch control
- Hydraulically extendable pushpole
- Carbide cutting edges for snow wing moldboard



A standard wing requires two sets of proportionally actuated machine hydraulics (2500 – 2750 psi @ 10 – 30 GPM flow rate). The hydraulic valve section operating the snow wing moldboard lift circuit requires float capability. One additional hydraulic control valve section is required for each optional hydraulic wing function added.

	MSW202
Blade Height (Front-Rear)	33" - 44"
Cutting Edge	$\frac{3}{4}$ " top drilled
Moldboard Cutting Edge Angle	70°
Travel Below Level Ground Position (front – rear) *	3" – 50"
Float Travel Distance (front-rear)	6" - 20"
Maximum Level Benching Height *	48"
Sweep Angle Range (from grader centerline)	38° - 52°
Mount Ground Clearance *	26"
Transport Width (CAT 140M/160M) *	132"
Transport Height Range (pushpole retracted to pushpole extended) *	167-188"
ATTACHMENT WEIGHT	4,295 lbs

* Can vary with tire size/type and cutting edge type

PLOWS



ONE-WAY PLOWS

WBM's One Way Plows are used exclusively for clearing snow. The funnel-shaped, radial moldboard profile easily and effectively clears and casts snow. Operating the grader at moderate to high speed forces the snow into the tight curvature of the moldboard which funnels it up and out of the large radius open end.

FEATURES & BENEFITS

- High strength tubular frame for long lasting durability
- Proven moldboard profile provides excellent snow casting and clearing characteristics
- Adjustable skid shoes increase cutting edge life and plow stability
- 8'-8" cutting width covers most small to medium size grader width over tires; 10' cutting width covers most medium to large size graders width over tires
- Increased durability to withstand impact in snow clearing operations

STANDARD EQUIPMENT

- Bolt-on reversible cutting edges to promote a longer service life
- KAT or Integral Lift

OPTIONAL EQUIPMENT

- High abrasion cutting edges (ie: carbide) for extreme and high wear conditions



V-PLOWS

WBM's V-Plows are designed for initial path clearing on snow-drifted roads. The unique 'V' shape provides a wedge action to breakup hard-packed snow and cast it to the sides of the grader.



FEATURES & BENEFITS

- Strong tubular frame is able to withstand clearing high impact heavy/high snow
- Proven radiused 'V' wing profile and angle
- Adjustable skid shoes increase service life and plow stability
- Increased blade height for improved visibility
- Increased durability to withstand impact in heavy or high snow areas during clearing operations
- Excellent initial drift breaking capability combined with superior side snow casting ability
- Aggressive curvature allows snow to be rolled and discharged quicker and further while forcing the blade to carry less snow during operation

STANDARD EQUIPMENT

- Comes standard with KAT lugging
- Replaceable top-drilled cutting edges promote long service life

OPTIONAL EQUIPMENT

- Optional high abrasion cutting edges (ie: carbide) for high wear and extreme conditions
- Available in 8'8" or 10'10" cutting widths

WHEEL LOADER ATTACHMENTS

BLADES



HYDRAULIC ANGLE SNOW BLADES WITH TRIP MOLDBOARDS

WBM's Hydraulic Angle Snow Blades with Trip Moldboards are well-known for their excellent quality and strength in clearing snow.

FEATURES & BENEFITS

- Moldboard profile provides great snow carrying and rolling capabilities
- Dual heavy-duty hydraulic angling cylinders provide up to 30° left/right angling to hold the blade in the desired position
- Two adjustable skid shoes enhance the cutting edge service life and grading characteristics
- Snow blade can be operated with down pressure or in free floating positions
- Safety trip springs to protect the plow from hidden obstructions - the plow moldboard flows over the obstacle and returns to its upright position after passing over the obstruction
- LH/RH heavy-duty bolt-on curb protectors
- LH/RH corner flags



HYDRAULIC WINGED SNOW BLADES

WBM's Hydraulic Winged Snow Blades are equipped with 3' hydraulic folding wings that rotate 180° to provide adjustable control over clearing width and angle.

FEATURES & BENEFITS

- Available with center section widths of 10', 12' and 14'
- Provide clearing widths up to 16', 18' and 20' respectively
- Blade configurations include: front box, rear box and straight
- Center section has a spring controlled trip edge
- Blade can be hydraulically angled up to 30°
- Built-in float provides capability to follow road contour
- Bolt-on style lugging system





U/V ANGLING BLADES

WBM's U/V Angling Blades are extremely versatile for use in snow removal applications. The moldboard is hydraulically configured into U-style, V-style, straight or angled blade types.

FEATURES & BENEFITS

- High back curved moldboard provides great snow carrying and rolling capabilities
- 130° u-blade angle supplies exceptional snow carrying capability to push or pile snow
- 230° v-blade angle provides outstanding piercing traits for ploughing deep snow
- 25° blade angling capability left/right enables easy side-casting or windrowing
- Straight position allows for straight-forward pushing and clearing
- Adjustable skid shoes increase cutting edge service life and grading characteristics
- Center drilled reversible bolt-on cutting edges extend the attachment's service life
- Various sizes available to match the application and machine capability



SNOW WING AND BLADES

WBM's fully integrated Hydraulic Snow Wing and Blade provide an excellent match for increasing versatility and productivity in road clearing and shouldering applications.

FEATURES & BENEFITS

- Moldboard profiles prove to deliver optimum material rolling characteristics
- Dual hydraulic cylinders provide positive angling force to hold the front blade in the desired position
- Maximum blade widths and heights to match application and machine capability
- Dual hydraulic angling cylinders provide 30° blade angle left/right
- Top drilled reversible bolt-on edges to promote long service life
- Wing and blade equipped with fully tripping moldboards

PLOWS

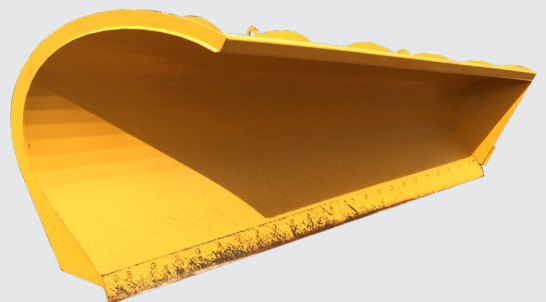


RUNWAY PLOWS (RAMP HOGS)

WBM's Runway Plows are used for clearing snow from airport runways. They are available in a "straight blade" design and are manufactured in 5-foot increments starting at 15 feet up to 30 feet. Ramp Hogs utilize bolt-on wings on each end of the blade to eliminate windrows and a rubber flap bolted to the top of the blade to decrease 'blow-over' of snow that affects operator visibility during high speed clearing.

ONE WAY PLOWS

WBM's One Way Plows are used for side-casting snow to the right of the wheel loader. The unique moldboard is designed to effectively force snow into the tight curvature of the moldboard which funnels it up and out of the large radius open end.



BUCKETS



SNOW BUCKETS

WBM's Snow Buckets/Light Material Buckets are suitable for handling materials such as snow, peat moss, chips, hog fuel, etc.



FEATURES & BENEFITS

- Larger capacity than General Purpose Buckets to maximize payload in light material applications
- High strength steel base edge, leading edge, weld-on heel plates, auxiliary side strip and weld-on side seam (wrap around) wear plates
- 44,000 psi yield strength steel shell, strongback and sideplates
- One piece under shell support and rib configuration
- Spill guard and corner gussets
- Excellent loading characteristics in stockpiling applications
- Bucket capacities are rated per SAE J742 and based on heaped capacities
- Bolt-on cutting edges promote a long service life
- Available in a wide variety of widths and capacities

SNOW BASKETS

WBM's Snow Baskets are used for stockpiling and loading snow in high capacity applications.

FEATURES & BENEFITS

- Light weight, yet durable design
- High strength wear strips and bolt-on edges
- High capacity bucket for enhanced productivity
- Open slot design provides exceptional operator visibility





SPREADER BUCKETS

WBM's Spreader Bucket is an excellent dual purpose attachment that is designed to easily spread sand/small aggregate on roadways and can be used as a regular general purpose bucket as well.

FEATURES & BENEFITS

- Capacities range from 2.0 yd³ to 6.0 yd³ based on ISO 7546/SAE J742 capacity standard
- Variable speed spreader bar mounted on greaseable bearings
- Direct drive hydraulic motor design provides maximum torque to spreader bar shaft
- Adjustable discharge gate openings
- Bucket equipped with reversible bolt on cutting edges

Note: requires one hydraulic circuit to operate the spreading function.

ADDITIONAL ATTACHMENTS

SCRAPER V-PLOWS

WBM's Scraper V-Plows are designed for initial path clearing on snow-drifted roads. The unique 'V' shape provides a wedge action to breakup hard-packed snow and cast it to the sides.



FEATURES & BENEFITS

- 15' clearing width
- Excellent 'drift breaking' and snow casting capability
- Strong tubular frame is able to withstand high impact clearing applications
- Dual cylinder lift group
- Adjustable skid shoes increase service life and plow stability
- Bolt-on top drilled cutting edges to promote service life
- Easy to mount



ICE/SNOW SCARIFIERS

WBM's Ice/Snow Scarifiers are designed to effectively penetrate and clear ice or hard-packed snow to provide traction.



POWER BROOMS

WBM's Power Brooms are ideal for clearing sand and gravel from roads, parking lots and other large grounds. This product is also great for light snow removal applications.

TRUCK ATTACHMENTS

SNOW WINGS AND PLOWS

Weldco-Beales Mfg. has a full line of Truck Attachments for snow removal. Equip your truck to be a complete winter road maintenance system.

FRONT OR MID-MOUNTED TRUCK SNOW WINGS

A Plow extension to cover more road way in one pass, and keep the truck away from the shoulder of the road.



FRONT-MOUNTED SNOW WING



MID-MOUNTED SNOW WING





HYDRAULIC TWO WAY PLOWS

- Includes 2 way blade and lift group
- Has a spring trip moldboard of 3/16" steel
- Replaceable cutting edges - high carbon steel standard, optional carbide edges available
- Rubber deflector reduces snow backspray
- A 12' wide blade that angles up to 40° in either direction

Blade shown with optional equipment



ONE WAY PLOWS

Set at an angle for greater snow throwing capacity and longer throw arc of the snow to the shoulder of the road.



TWO WAY PLOWS

Hydraulic Two Way Plow has 40° of rotation either way, to allow the Plow to push snow to either side of the road. Also great to doze through intersections and bridges.

COMPLETE PRODUCT LISTING

EXCAVATOR & LOG LOADER

Booms

Boom Lift Cylinder Adapter Kit
Long Reach Front
Quick Extension Stick

Brush Cutter

Rotary Cutter (ERC)
Rotary Flail (ERF)

Bucket Clamps (Thumbs)

Buckets

Cleanup Bucket
Concrete Removal Bucket
Ditching V Bucket
Extreme Service Bucket
Extreme Service Rock Bucket
HDD Bucket
Road Builder Bucket
TCB Chuck Blade
TCB Twist-A-Bucket
Frost Bucket

Couplers

Compactor/Hammer Adapter
Hydraulic Wedge
Manual Wedge
Pin-Grabber
Powertilt

Grapples

Butt-n-Top Grapple
Clam Grapple
Demolition/Contractors Grapple
HCL Grapple
Heel Grapple
Mat Grapple
Mag Grab Grapple
Orange Peel Grapple
CTL Dangle-Head Grapple

Guarding and Cabs

Cab Riser and Catwalks
Forestry Cab
FOPS (Falling Object Protection System)
Rock and Underhouse Guards

Rakes

Brush Rake
Mounding Rake

Stick Mounted Rippers

WHEEL LOADER

Blades/Plows

Hydraulic Angle Blade
Hydraulic Angle Snow Blade
Hydraulic Winged Snow Blade
Ice/Snow Scarifier
Manual Angle Blade
Moldboard Endgate Snow Plows
One Way Plow
Power Broom
Runway Plow (Ramp Hog)
Snow Wings
Straight Blade
U/V Angle Blade

Buckets

Bale/Silage Bucket
Coal Seam Bucket
Coal Bucket (Stockpiling)
Corral Bucket
Fertilizer Bucket
General Purpose Bucket
Light Material Bucket
Multi Purpose Bucket (4 in 1)
Rock Bucket
Rock Tine Bucket
Roll Out Bucket
Side Dump Bucket
Spreader Bucket
Wood Chip Bucket

Cable Reeler

Couplers

KAT Master Hitch
WLKAT Series KAT Master Hitch

Fork Racks

Bucket Forks
Forklift Masts
High Visibility Pallet Fork Rack
Peeler Fork
Pipe and Pole Fork Rack

Grapples

CTL Log Grapple
High Capacity CTL Log Grapple
Highlift Grapple
Log and Lumber Forks
Mat Grapple
Pipe and Pole Grapple
Tree Length Log Grapple

Jib Boom

Tire Handler

MOTOR GRADER

Blades

Hydraulic Angle Blade
Hydraulic Angle Snow Blades
Manual Angle Blade
Straight Blade
U/V Angle Blade

Counter Weight/Push Block

Cutting Edge Rack

Lift Group Front

Integral Lift Group
KAT Master Hitch Lift Group

Parallelogram Ripper

Plows

One Way Plow
V-Plow

Snow Wings

Hydraulic Mast Snow Wing
Hydraulic Mastless Snow Wing

CRAWLER DOZER

Blades

Coal Blades
Chip Blade
Manual Angle Blade
6 Way Power Angle/Tilt Blade

Forestry Attachments

Arches
Guarding

Parallelogram Ripper

Pipelayer ROPS

Rakes

Roll Over Protective Structures (ROPS)

Sideboom

SCRAPER

Plow

V-Plow

TRUCK HIGHWAY

Plows

One-Way Plow
Two-Way Plow

Sanding Equipment

Snow Wings

Front Mounted
Mid-Mounted

ARTICULATED

Box Liners

Dump Body

Ejector Boxes

Tail Gate

HEAVY HAUL

Box Liners

LOADER BACKHOE

Blades/Plows (Loader)

Hydraulic Angle Blade
Manual Angle Blade
Power Broom
Straight Blade
U/V Angle Blade

Bucket Clamps (Backhoe)

Buckets (Backhoe)

Cleanup Bucket
Concrete Removal Bucket
Ditching V Bucket
SDD Bucket
Twist-A-Bucket
TCB Chuck Blade
Frost Bucket

Buckets (Loader)

General Purpose Bucket

Couplers (Backhoe)

Compactor/Hammer Adapter
Manual Wedge
Powertilt

Couplers (Loader)

Hydraulic Quick Coupler
Manual Quick Coupler
Fork Racks (Loader)
Bucket Forks
High Visibility Pallet Fork Rack
Pipe and Pole Fork Rack Dual Top Clamp

Jib Boom (Loader)

Stick Mounted Ripper (Backhoe)

COMPACT EXCAVATOR

All Products

CUSTOM WORK

Blades

Excavator Blade

Buckets

Sidewalk Bucket
Shovel Front Conversion

Grapples

Pipe Tie-In Grapple

Guarding

Track Pad Re-Grouser

Jib Boom

Modified Jib Boom

Mining Truck

High Capacity Truck Body
Tail Gates
Truck Bumper

Pipelayer ROPS

Pipelayer ROPS

TRUCK-MOUNTED CRANES

23-50 Ton Models

Man-Baskets

Pile Drivers

www.weldco-beales.com

www.weldco-hydralift.com



WBM Edmonton

12155 - 154 Street, Edmonton AB, T5V 1J3

Toll Free

General Inquiries: 1 800 661 4155

Sales Direct: 1 866 205 7158

Parts Direct: 1 866 205 7159

Local

General Inquiries: 780 454 5244

Sales Direct: 780 453 5333

Parts Direct: 780 453 5329

Fax: 780 455 6770

WBM Langley

5770 Production Way, Langley BC, V3A 4N4

Toll Free

General Inquiries: 1 800 665 0511

Parts Direct: 1 866 533 8938

Local

General Inquiries: 604 533 8933

Sales Direct: 604 533 8933

Parts Direct: 604 533 8938

Fax: 604 530 2206

WBM Barrie

515 Welham Road, Barrie ON, L4N 8Z6

Toll Free

General Inquiries: 1 877 320 4286

Local

General Inquiries: 705 733 2668

Parts Direct: 705 733 2668 ext. 110

WBM Regional Sales Offices

Las Vegas, NV, USA

Phone: 702 544 1184

Toll Free: 1 800 665 0511

Santiago, Chile

Phone: +56 9 7139 5603

Toll Free: 1 800 661 4155



Weldco Hydra-Lift

12155 - 154 Street, Edmonton AB, T5V 1J3

Toll Free:

General Inquiries: 1 866 WELDCO1

Local

General Inquiries: 780 454 5244

Fax: 780 455 6770