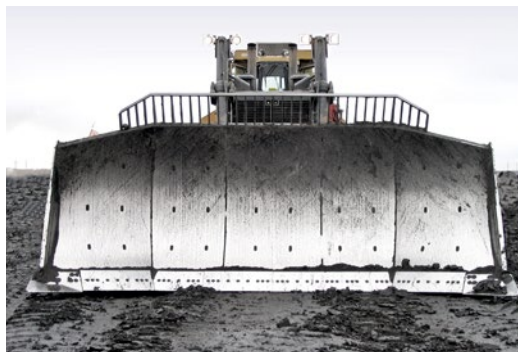




# MINING PRODUCTS



**WELDCO-BEALES MFG.**  
SPECIALISTS IN ATTACHMENT DESIGN AND MANUFACTURING  
[www.weldco-beales.com](http://www.weldco-beales.com)

# *Attaching Value* – DESIGNING AND MANUFACTURING PREMIUM HEAVY-DUTY ATTACHMENTS, SPECIALIZED TO MEET DEMANDING REQUIREMENTS.

Weldco-Beales Mfg. (WBM) proudly *attaches value* to the forestry, construction, road maintenance, mining, and resource industries.



Since 1945, WBM has attained a strong wealth of knowledge, experience, skills, and technologies to build value for its customers. This enables the company to continuously create and deliver unique solutions. With WBM, customers can be confident that they will always receive the highest quality products.



[www.weldco-beales.com](http://www.weldco-beales.com)

# CONTENTS

## Excavator Attachments

Wedge Couplers .....	4
Pin-Grabber Couplers .....	4
Cleanup Buckets .....	5
Digging Buckets .....	6
Bucket Clamps .....	6
Large Capacity Buckets .....	7
Long Reach Fronts .....	8
Shovel Front Conversions .....	8
Protective Structures .....	9

## Wheel Loader Attachments

ISO Hydraulic Master Hitch .....	10
Kwik-a-Tach (KAT) Master Hitch .....	10
Rock Buckets .....	11
Coal Buckets .....	12
Rock Tine Buckets .....	12
Roll-Out Buckets .....	13
General Purpose Buckets .....	14
Fork Racks .....	14
Blast Hole Stemmers .....	15
Mine Trailing Cable Hoops .....	15
Mine Cable Bridge Pole Handlers .....	15
Jib Booms .....	15
Cable Reelers .....	16
Tire Handlers .....	18

## Crawler Dozer Attachments

Blades and Blade Wear Packages .....	20
Cabs .....	21
Roll Over Protective Structures (ROPS) .....	21
Track Pad Cell Regrousering .....	21

## Truck Attachments

Ejector Bodies .....	22
Underground Dump Bodies .....	22
Body Liner Kits .....	23
Tow Bumpers .....	23

## Underground Mining

Scooptram Quick Couplers .....	24
Scooptram Buckets .....	24
Protective Structures .....	25
Shotcrete Packer Boom .....	25
Scaling Front Booms .....	25

## Complete Product Listing .....

# EXCAVATOR ATTACHMENTS

## WEDGE COUPLERS

WBM's Wedge Couplers enable operators to use all WBM quick coupler lugged attachments on machine models within the same weight class.



### MANUAL WEDGE COUPLERS

Maintaining factory tip radius and breakout force, this product allows simple quick changes between attachments.

### HYDRAULIC WEDGE COUPLERS

Include a spring-activated safety locking mechanism, cylinder lock valve and standard audible warning when disengaged.



### HL SERIES HYDRAULIC WEDGE COUPLER

The WBM Patented HL Series Hydraulic Wedge Coupler incorporates a hydraulically controlled safety lock mechanism so the operator does not have to leave the cab.



## PIN-GRABBER COUPLERS

WBM Triple Lock 'Pin-Grabber' Couplers incorporate enhanced safety features for fast attachment change-out from the comfort and safety of your machine. The dead lock saddle prevents the possibility of the front lock releasing in the event of a hydraulic failure.



## CLEANUP BUCKETS

WBM's Cleanup Buckets are designed for loose and bulk loading applications as well as finish grading. This product reduces cycle times by optimizing machine's breakout and crowd forces. Its dual taper design enables easy cleanout. Cleanup Buckets also have larger capacities and widths versus Heavy Duty Digging buckets.

### FEATURES & BENEFITS

- Drilled for bolt-on cutting edges
- Dual tapered design for easy clean out
- Available in a full range of sizes
- Reduces cycle times by optimizing machine's breakout and crowd forces
- Larger capacities and widths versus Heavy Duty Digging buckets
- Smooth finish grades





# EXCAVATOR DIGGING BUCKETS



## HEAVY DUTY DIGGING BUCKETS

WBM's Heavy Duty Digging Buckets are designed for general purpose and heavy-duty digging applications. Available with optional side cutters, side bar protectors and leading edge protectors.



## EXTREME SERVICE BUCKETS

WBM's Extreme Service Bucket's tough, durable design is well-suited for work in harsh, difficult terrain and other heavy-duty digging applications. These buckets have all the qualities of a Heavy Duty Digging Bucket, but with increased wear resistance.



Shown with optional chocky blocks

## EXTREME SERVICE ROCK BUCKETS/ ROAD BUILDER BUCKETS

WBM Extreme Service Rock Buckets (Road Builder Buckets) are impact/abrasion resistant, designed with even further increased wear resistance to withstand extreme wear conditions in rock and quarry environments.

## BUCKET CLAMPS (THUMBS)

WBM's Bucket Clamps can be added to any bucket, blade or rake to increase its ability to grab and move objects with precision.

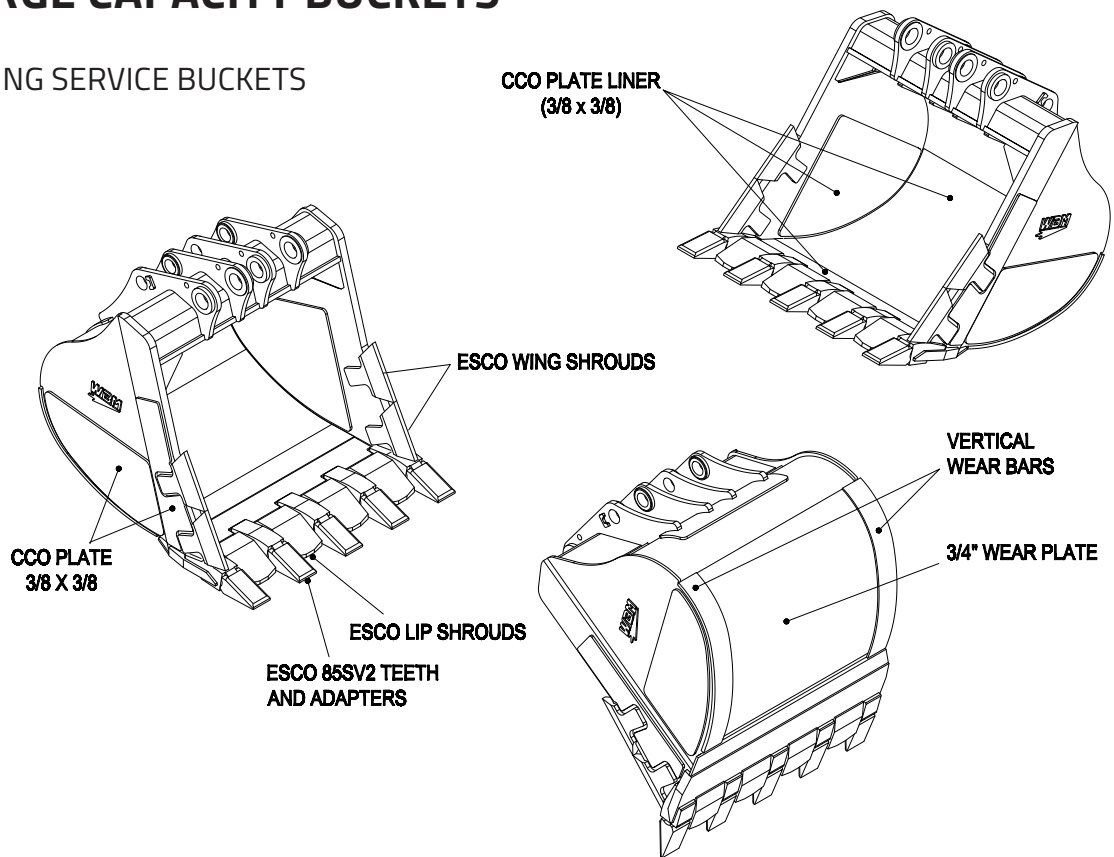
### FEATURES & BENEFITS

- Heavy-duty construction maximizes service life
- Adds versatility for forestry, construction, demolition and mining applications
- Increases machine's efficiency

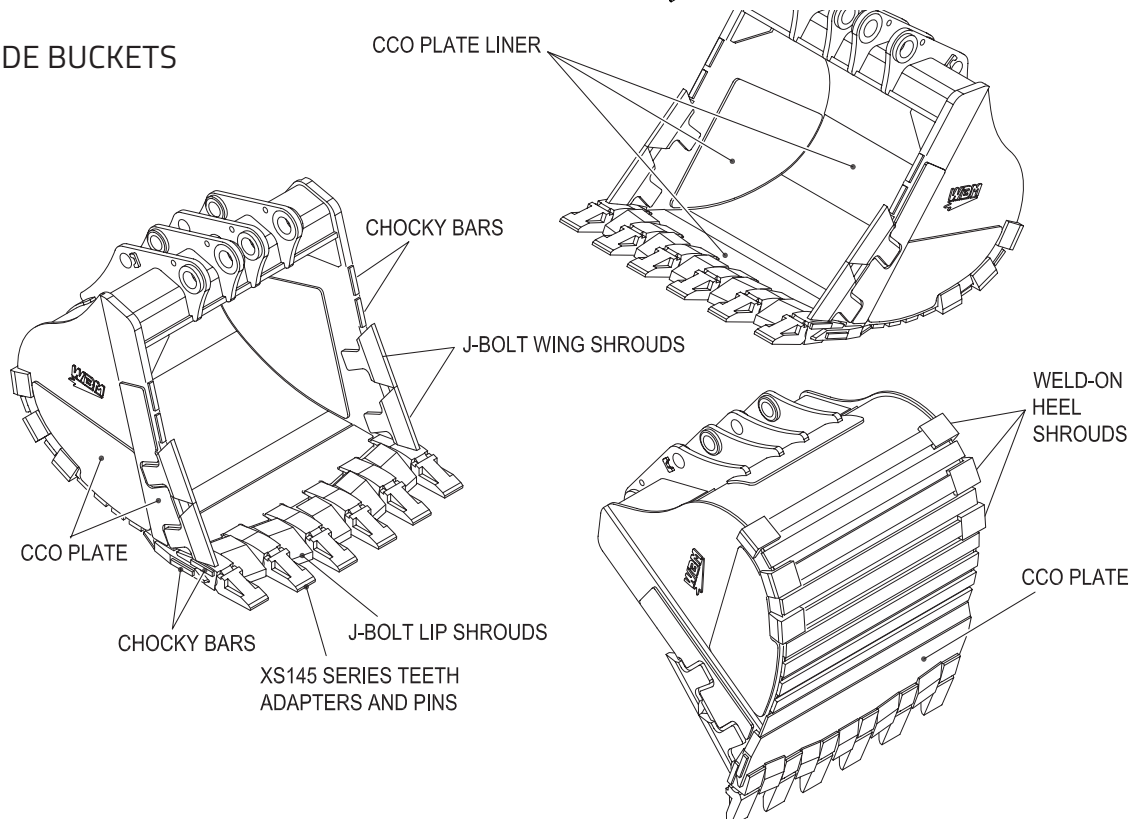


# LARGE CAPACITY BUCKETS

## MINING SERVICE BUCKETS



## SPADE BUCKETS



# BOOMS

## LONG REACH FRONTS

WBM Long Reach Fronts are designed and manufactured to support the following applications:

- Canal Clearing
- Dredging
- Lagoon Cleaning
- Long Reach Material Handling
- River and Canal Pipeline Crossings

## BOOM LIFT KITS

When an excavator's priority is lift height, not digging depth, the WBM Boom Lift Kit offers an excellent solution. Once added to a machine, the excavator's lift height is increased.

## SHOVEL FRONT CONVERSIONS

WBM's Shovel Front Conversions are designed to convert an excavator from backhoe configuration to face shovel for mining applications. This product includes the shovel bucket, stick, boom, cylinders, and hydraulic kit.







**Falling Object Protection Structure (FOPS)**



**Falling Object Guard (FOG)**

## PROTECTIVE STRUCTURES

WBM's FOPS (Falling Object Protection Systems) and FOG (Falling Object Guard) are designed to protect the excavator cab and operator from falling objects in dangerous environments. These structures are used primarily in the demolition, forestry and construction industries.

A FOPS is a separate structure that is mounted around the cab of a machine (ROPS certified or non-certified cab), that protects the cab from falling objects.

A FOG on the other hand, is guarding that is bolted directly to a certified ROPS cab, typically in two pieces: a roof and a front FOG.

As many machine manufacturers are now producing their own ROPS certified cabs, it is becoming more common to only have to install FOG on machines

Prior to release from manufacturing, WBM FOPS can be performance tested by request on our Structural Performance Test Stand located in Langley, British Columbia and compliant with rigid industry standards.



## ROCK GUARDS

WBM's Rock Guards protect the excavator track from foreign objects and debris. They are used in environments where track damage is common such as forestry, road building and demolition.



## UNDERHOUSE GUARDS

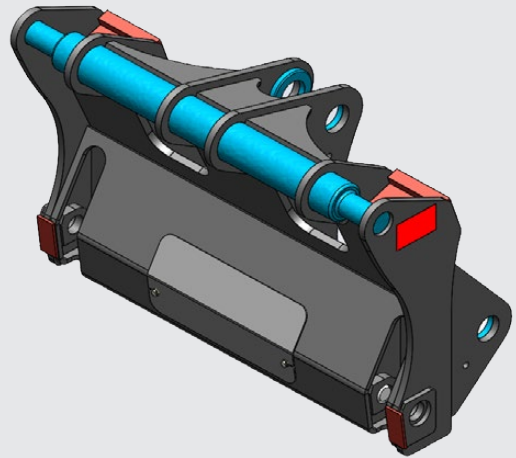
WBM's Underhouse Guards are used primarily in harsh forestry environments to protect the underside of the excavator from damage.

# WHEEL LOADER ATTACHMENTS

## ISO HYDRAULIC MASTER HITCH (ISO 23727 STYLE KAT )

### FEATURES & BENEFITS

- Improved visibility with revised shape and open design
- Increased range of interchangeability with a wider range of models and compatible manufacturers
- Similar in weight to our current optimized wheel loader KAT systems
- Designed to recognize machine performance characteristics by keeping the load as close to the wheel loader as possible
- Designed to fit wheel loaders ranging in class size from WL100 to WL200



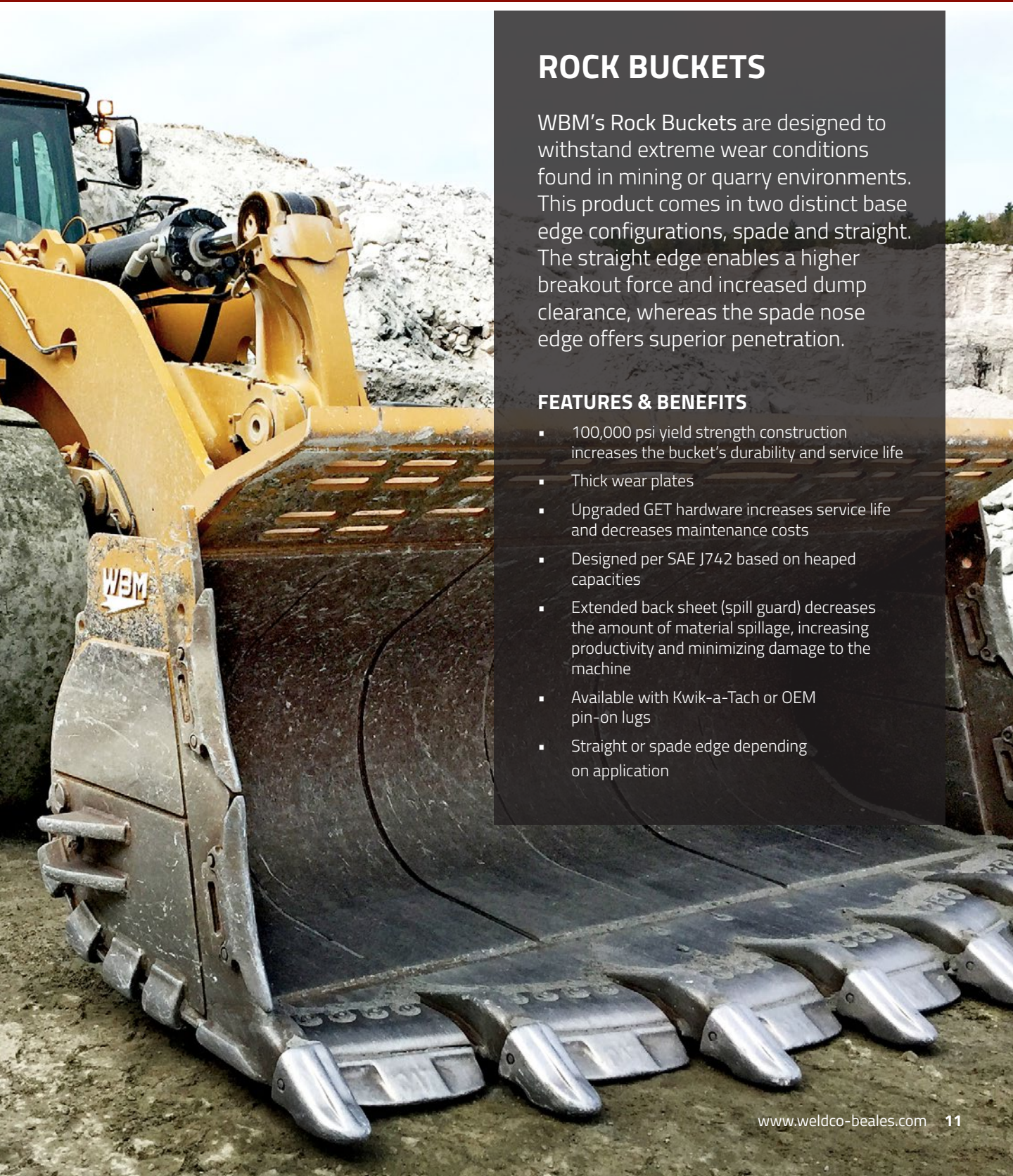
## KWIK-A-TACH (KAT) MASTER HITCH

WBM's (KAT) Master Hitch is the centerpiece product that increases versatility of wheel loaders by allowing quick and easy inter-changeability of attachments. By installing KAT hooks or lugs in place of the factory of OEM pin-on lugging on an attachment, the KAT Master Hitch is capable of changing the attachment utilizing a hydraulic or manual lock pin system.

### FEATURES & BENEFITS

- Designed to pin on the boom and linkages using OEM specifications
- Utilizes a top round bar and horizontal lock pin for lug hook-up
- Hydraulically actuated or manually operated lock pins
- Heavy-duty frame
- One double acting cylinder
- **Optional:** a four hook KAT Master Hitch is available to help stabilize large attachments
- **Optional:** Third Valve Power Beyond Kit - a method of using the loader's 3rd valve to operate both the cylinder and a hydraulic function on the attachment





## ROCK BUCKETS

WBM's Rock Buckets are designed to withstand extreme wear conditions found in mining or quarry environments. This product comes in two distinct base edge configurations, spade and straight. The straight edge enables a higher breakout force and increased dump clearance, whereas the spade nose edge offers superior penetration.

### FEATURES & BENEFITS

- 100,000 psi yield strength construction increases the bucket's durability and service life
- Thick wear plates
- Upgraded GET hardware increases service life and decreases maintenance costs
- Designed per SAE J742 based on heaped capacities
- Extended back sheet (spill guard) decreases the amount of material spillage, increasing productivity and minimizing damage to the machine
- Available with Kwik-a-Tach or OEM pin-on lugs
- Straight or spade edge depending on application



# COAL BUCKETS

WBM's Coal Buckets are used to load hoppers, conveyors, trucks, or train cars from mined or loose coal stockpiles. Due to increased payload expectancy, this product is typically 15-20% larger in capacity than Coal Seam Buckets.

## FEATURES & BENEFITS

- 44,000 psi yield strength construction increases the bucket's durability and service life
- Straight or semi-spade nose base edge configuration
- Taper floor construction provides excellent loading characteristics
- Heavy-duty GET hardware
- Increased spill guard length provides material support and prevents spillage, increasing productivity and minimizing damage to the machine
- Designed per SAE J742 based on heaped capacities



# ROCK TINE BUCKETS

WBM's Rock Tine Buckets are used in quarry applications to separate large material from smaller material (for example, removing rocks from dirt).

## FEATURES & BENEFITS

- Application-specific tine spacing
- Enclosed upper spill guard (full length or center section) reduces material spillage, increasing productivity and minimizing damage to the machine
- Designed per SAE J742 based on heaped capacities
- Available with Kwik-a-Tach or OEM pin-on lugs
- Abrasion resistant and high-strength material increases bucket's service life
- Optional base edge drilled to accept bolt-on edges or bolt-on adapters



# ROLL OUT BUCKETS

WBM Roll-Out Buckets provide extra dump height and extra reach. They are used primarily in loose material stockpiling or loading applications. The design maintains maximum cutting edge dump clearance to ground.

## FEATURES & BENEFITS

- 90 ° - 105 ° of dump angle
- Dual hydraulic cylinder actuation
- Bucket capacities are designed per SAE J742, and are based on heaped capacities
- Base edge drilled for OEM bolt-on edges
- Available with KAT or OEM pin-on lugging
- Available in a wide variety of widths and capacities
- Positive dump and roll back action
- Maintain machine capacity without losing payload capability





## GENERAL PURPOSE BUCKETS

WBM's General Purpose Buckets are designed to provide excellent loading capabilities and long-life for a variety of common applications such as bank loading, excavating, stockpiling and grading. Available in a variety of widths and capacities, this design has been tested and proven to increase service life and productivity.

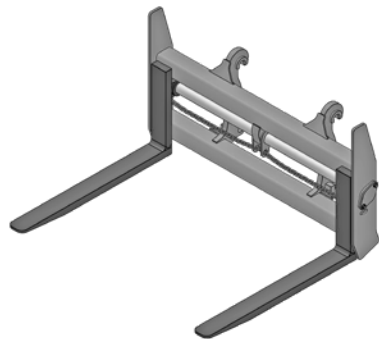
### FEATURES & BENEFITS

- Base edge can be drilled to accept OEM bolt-on edges, bolt-on adapters and segments, or custom bolt-on edges
- Taper or flat bottom configuration
- Bucket capacities are rated per SAE J742 and based on heaped capacities
- Available with Kwik-a-Tach or OEM pin-on lugs
- OEM drill pattern enables dealer after-market parts sales
- Excellent loading characteristics increase wheel loader efficiency



## FORK RACKS

WBM's line of Fork Racks have a rugged, low profile frame that offers improved visibility to tines at both ground and deck levels.





## BLAST HOLE STEMMERS

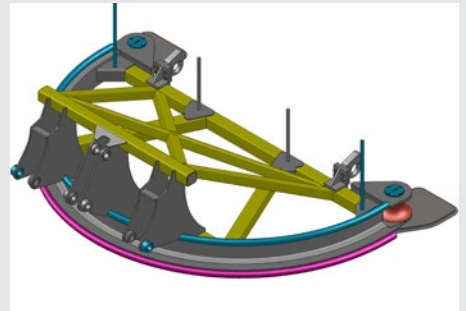
WBM's Blast Hole Stemmers are designed to quickly and safely stem the vertical blasting boreholes used in open pit mining operations.

Curved pivoting blades, combined with a push blade, are used to collect drill cuttings from around the blast hole. The hole is stemmed using a simple "gather and drag" technique.



## MINE TRAILING CABLE HOOPS

WBM's Mine Trailing Cable Hoops have a heavy-duty design and they provide operators with a quick and safe way to move up to 4.25" OD cable without leaving the cab. This product is available with pin-on or quick coupler mounting.



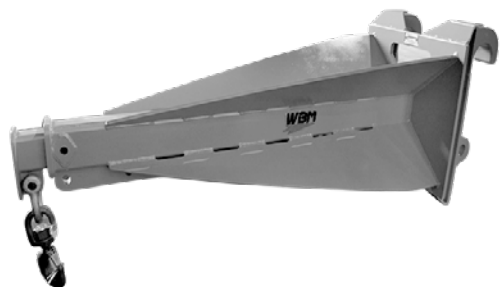
## MINE CABLE BRIDGE POLE HANDLERS

WBM's Mine Cable Bridge (Pole) Handlers safely remove, relocate, and install cable bridge poles.



## JIB BOOMS

WBM Jib Booms provide increased height and placement capabilities and are available in either fixed or extendable (manual or hydraulic) configurations.





## CABLE REELERS

WBM Cable Reeler's are designed to handle electric distribution and tailing cable used in open pit and underground mines around the globe.

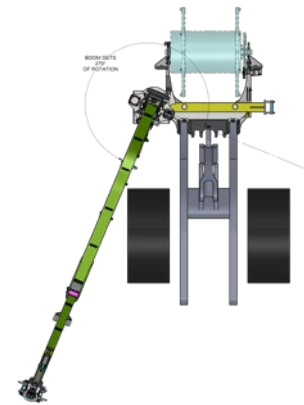
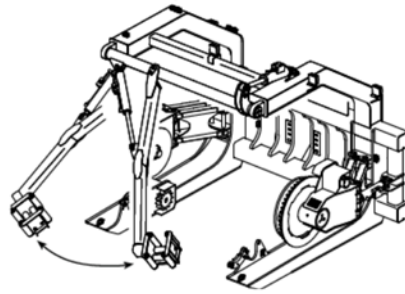
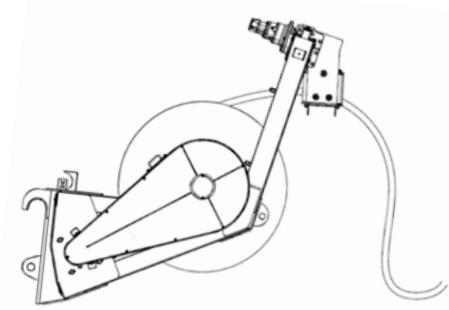
### FEATURES & BENEFITS

- Designed to match cable diameter, length and lift capacity of selected carrier machine
- "Lift and go" hydraulic drive system allows cable drum to be picked up without assistance from ground crew
- Flexible system allows use of single or multiple drums, as part of a larger system
- Cable can be tested or used, even when only partially deployed as both connectors (plug and socket) are exposed
- Drums designed to meet minimum bending radius of specified cable, and used multiple times over many years, in the toughest and harshest environments found on mine sites around the world

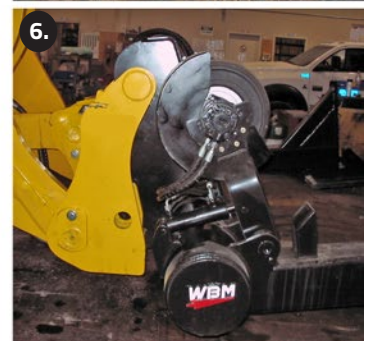
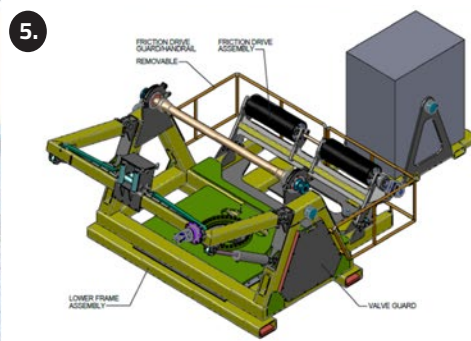
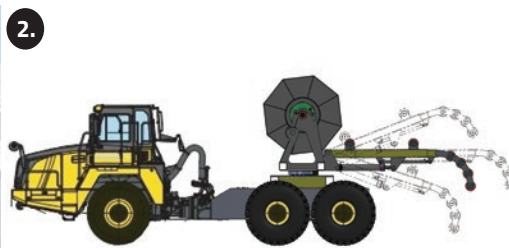
### OPTIONAL EQUIPMENT

- Camera kit available
- Round or octagonal HD steel drums supplied with or without cable connector (pothead) storage area
- Manual or hydraulic drum lock – prevents the drum from bouncing out when working on rough surface conditions
- Manufactured to fit any brand of wheel loader/dozer, or telehandler
- Manual or hydraulic "free spool" valve available
- Optional layout boom and grapple
- Optional fairleads and telescopic side boom

# OPTIONAL & CUSTOM EQUIPMENT



Optional fairleads, level winders and cable positioning booms are available for all models as required.



WBM MODEL #	DESCRIPTION
CR200-50/60	Up to 200m of 50-60mm cable
CR300I-50/75	Up to 300m of 50-75mm cable
CR300II-65/90	Up to 300m of 65-90mm cable
CR600-75/100	Up to 600m of 75 to 100mm cable
CR1000-80	Up to 1000m of 80mm cable

## CUSTOM EQUIPMENT

1. Dual Drive
2. Truck Mount
3. Dual Drum
4. Custom
5. Skid Mount
6. Friction Drive

Custom sizes available.





## TIRE HANDLERS

WBM Tire Handlers are designed to safely and efficiently handle OTR tires and rim assemblies on large mobile equipment. Available in capacities from 3,000lb /1,365Kg to 40,000lb /18,180Kg for both Wheel Loaders and Fork Lift Trucks.

### FEATURES & BENEFITS

- “Clear path” low profile body and grip arm design allows the operator maximum visibility and versatility to reach wheel rim components on inside dual position and maintain clearance to the machine even during vertical dismounts
- Parallelogram link grip arms for maximum operation range – allows for handling rim components and tires or wheel assemblies
- Rim handling pads allow heavy rim components to be handled with ease and safety
- Finger tip / joystick proportional controls for effortless and precise handling of tires and rim components
- Bead Breaker / Fall arrest arms for ultimate operational safety for the tire technician



TIRE HANDLER MODELS								
Series	Model	Max Capacity**	Max Reach	Min Closed	Max Open	Weight	Tire Pad Rotation	Body Rotation
W	T5W-R49	5,500 lb (2,500 Kg)	60"	30"	110"	3,300 lb (1,500 Kg)	360°	90°
W	T10W-R51	10,000 lb (4,550 Kg)	62"	18"	136"	3,300 lb (1,500 Kg)	360°	90°
W	T15W-R51	15,000 lb (6,820 Kg)	62"	18"	136"	5,900 lb (2,680 Kg)	360°	90°
W	T20W-R57	20,000 lb (9,090 Kg)	68"	42"	160"	10,000 lb (4,545 Kg)	360°	90°
W	T25W-R57	25,000 lb (11,365 Kg)	88"	32"	165"	15,500 lb (7,045 Kg)	360°	90°
W	T30W-R63	30,000 lb (13,635 Kg)	100"	32"	165"	15,500 lb (7,045 Kg)	360°	90°
W	T35W-R63	35,000 lb (15,910 Kg)	92"	34"	170"	21,500 lb (9,775 Kg)	360°	90°
C*	T3C100LP-R33	3,000 lb (1,365 Kg)	32"	24"	76"	~1,950 lb (885 Kg)	100°	75°
C*	T5C100LP-R35	5,500 lb (2,500 Kg)	42"	22"	96"	2,250 lb (1,020 Kg)	110°	90°
C*	T20C185-R57	20,000 lb (9,090 Kg)	69"	40"	158"	11,000 lb (5,000 Kg)	185°	90°

\* Low Profile Series

\*\* Carrier dependent



# CRAWLER DOZER ATTACHMENTS



## BLADES

WBM has an extensive design portfolio of Dozer blades in various styles for a wide range of machines. If an existing blade does not meet your needs, the Weldco engineering department has the expertise to design a custom solution.

### SAMPLE OFFERINGS

- U-Blades
- Semi U-Blades
- Straight Blades
- Angle/Tilt Blades
- Oil Sand Blades
- Coal Blades
- 6-Way Blades
- GET and Liner Kits

## BLADE WEAR PACKAGES

WBM's Blade Wear Packages utilize Chromium Carbide Overlay Plate for extra durability in severe abrasion applications.  $\frac{1}{4}$  on  $\frac{1}{4}$  pre-cut faceplates and complete side wear plate kits are available.





## **CABS**

WBM's Soft Cabs are designed to fit under Roll Over Protective Structures (ROPS). Standard designs for various makes and models are available as well as specialized solutions.



## **ROLL OVER PROTECTIVE STRUCTURES (ROPS)**

WBM's ROPS, complete with FOPS (Falling Object Protective Structures) provide better operator and machine protection in the event of a roll-over. All ROPS prototypes are destruction tested and approved to meet various standards and codes.



## **TRACK PAD CELL REGROUSERING**

WBM's Track Pad Cell Regrousering is an effective method to restore shoe-traction, extend the life of the shoe and save money. Using robotic technology, our welds are precise and consistent, creating a high-quality connection every time. Our high-capacity welding cell ensures a quick turnaround for complete regrousered track pad sets.



# TRUCK ATTACHMENTS



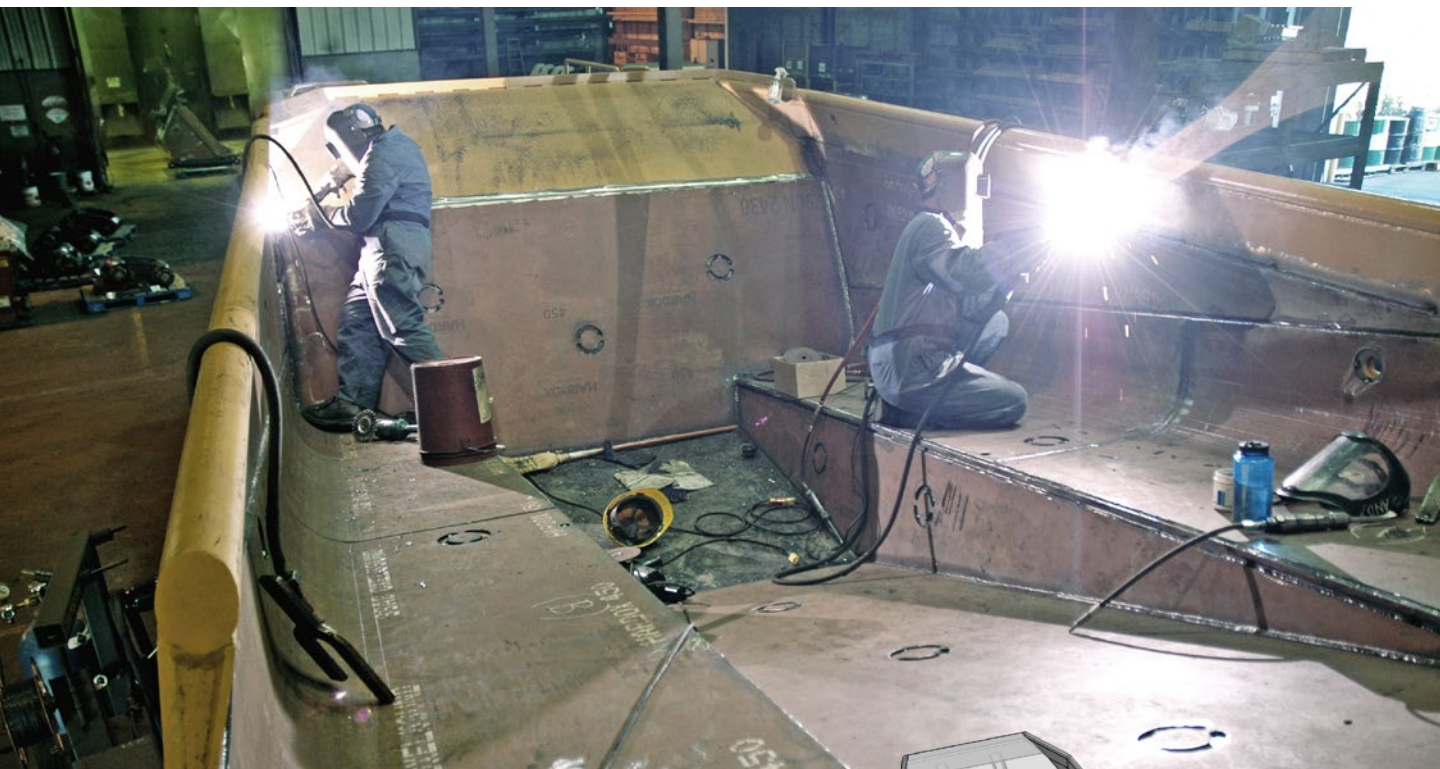
## EJECTOR BODIES

WBM's Ejector Bodies make articulated trucks ideally suited for operations in areas with limited overhead clearance. Being able to discharge the full load without having to raise the body, offers greater stability, particularly on soft surfaces.

## UNDERGROUND DUMP BODIES

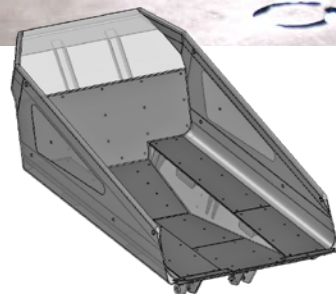
WBM's Underground Dump Bodies are designed for high-volume hauling in underground mining operations. Coupled with WBM bolt-on body liner kits, these dump bodies are able to withstand long-lasting performance in the toughest conditions.





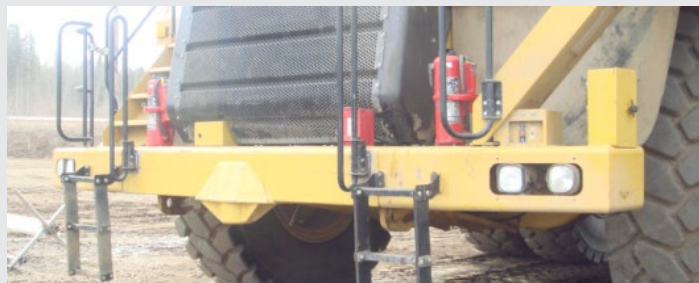
## BODY LINER KITS

WBM's Body Liner Kits are available as either a full or a partial kit. Heavy-duty steel plates are designed for specific makes and models of heavy haul trucks.



## TOW BUMPERS

Engineered Tow Bumpers are quickly installed weld-in replacements for safely towing Off-Highway mining trucks at the work site.





# UNDERGROUND MINING

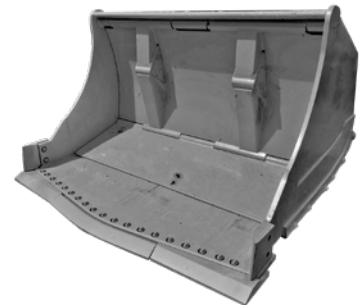
## SCOOPTRAM QUICK COUPLERS

WBM quick couplers help to quickly and easily interchange between multiple attachments used in underground mining applications, such as buckets, fork racks, and jib booms. Heavy-duty custom designs meet any customer's requirements.

## BUCKETS

### EJECTOR BUCKETS

WBM's Ejector Buckets are designed to work where headroom/dump clearance is an issue. Rock and other material are ejected out of the bucket rather than tipped out like a conventional bucket.



### ROCK BUCKETS

WBM Rock Buckets are designed to withstand extreme wear conditions, available with either spade or straight base edge configurations: the straight edge enables a higher breakout force and increased dump clearance and the spade nose edge offers superior penetration.



### ROCK TINE BUCKETS

WBM's Rock Tine Buckets are designed also to withstand the extreme wear conditions found in mining environments. They allow rocks to be sifted and sized according to tine spacing.



## PROTECTIVE STRUCTURES

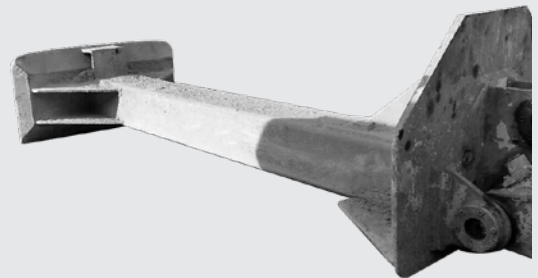
WBM designs and manufactures protective structures for Off-Highway machinery and specialty applications. Our engineering facilities are fully integrated with the following capabilities:

- Computer Aided Design and Drafting (CADD) modeling software, ACAD, PRO-E and INVENTOR
- Finite Element Analysis (FEA) stress and deflection software ALGOR
- Specification and functional development



## SHOTCRETE PACKER BOOM (RAMMER-JAMMER)

WBM 'Rammer-Jammers' are designed for heavy-duty packing operations, suited to match machine and application specifications. Available in fixed or hydraulically extendable configurations.



## SCALING FRONT BOOMS

WBM Scaling Front Booms safely provide optimum reach and coverage in underground mining spaces where stone and loose rock scaling is required.





# COMPLETE PRODUCT LISTING

## EXCAVATOR & LOG LOADER

### Booms

Boom Lift Cylinder Adapter Kit  
Long Reach Front  
Quick Extension Stick

### Brush Cutter

Rotary Cutter (ERC)  
Rotary Flail (ERF)

### Bucket Clamps (Thumbs)

### Buckets

Cleanup Bucket  
Concrete Removal Bucket  
Ditching V Bucket  
Extreme Service Bucket  
Extreme Service Rock Bucket  
HDD Bucket  
Road Builder Bucket  
TCB Chuck Blade  
TCB Twist-A-Bucket  
Frost Bucket

### Couplers

Compactor/Hammer Adapter  
Hydraulic Wedge  
Manual Wedge  
Pin-Grabber  
Powertilt

### Grapples

Butt-n-Top Grapple  
Clam Grapple  
Demolition/Contractors Grapple  
HCL Grapple  
Heel Grapple  
Mat Grapple  
Mag Grab Grapple  
Orange Peel Grapple  
CTL Dangle-Head Grapple

### Guarding and Cabs

Cab Riser and Catwalks  
Forestry Cab  
FOPS (Falling Object Protection System)  
Rock and Underhouse Guards

### Rakes

Brush Rake  
Mounding Rake

### Stick Mounted Rippers

## WHEEL LOADER

### Blades/Plows

Hydraulic Angle Blade  
Hydraulic Angle Snow Blade  
Hydraulic Winged Snow Blade  
Ice/Snow Scarifier  
Manual Angle Blade  
Moldboard Endgate Snow Plows  
One Way Plow  
Power Broom  
Runway Plow (Ramp Hog)  
Snow Wings  
Straight Blade  
U/V Angle Blade

### Buckets

Bale/Silage Bucket  
Coal Seam Bucket  
Coal Bucket (Stockpiling)  
Corral Bucket  
Fertilizer Bucket  
General Purpose Bucket  
Light Material Bucket  
Multi Purpose Bucket (4 in 1)  
Rock Bucket  
Rock Tine Bucket  
Roll Out Bucket  
Side Dump Bucket  
Spreader Bucket  
Wood Chip Bucket

### Cable Reeler

### Couplers

KAT Master Hitch  
WLKAT Series KAT Master Hitch

### Fork Racks

Bucket Forks  
Forklift Masts  
High Visibility Pallet Fork Rack  
Peeler Fork  
Pipe and Pole Fork Rack

### Grapples

CTL Log Grapple  
High Capacity CTL Log Grapple  
Highlift Grapple  
Log and Lumber Forks  
Mat Grapple  
Pipe and Pole Grapple  
Tree Length Log Grapple

### Jib Boom

### Tire Handler

## MOTOR GRADER

### Blades

Hydraulic Angle Blade  
Hydraulic Angle Snow Blades  
Manual Angle Blade  
Straight Blade  
U/V Angle Blade

### Counter Weight/Push Block

### Cutting Edge Rack

### Lift Group Front

Integral Lift Group  
KAT Master Hitch Lift Group

### Parallelogram Ripper

### Plows

One Way Plow  
V-Plow

### Snow Wings

Hydraulic Mast Snow Wing  
Hydraulic Mastless Snow Wing

## **CRAWLER DOZER**

### **Blades**

Coal Blades  
Chip Blade  
Manual Angle Blade  
6 Way Power Angle/Tilt Blade

### **Forestry Attachments**

Arches  
Guarding

### **Parallelogram Ripper**

### **Pipelayer ROPS**

### **Rakes**

### **Roll Over Protective Structures (ROPS)**

### **Sideboom**

## **SCRAPER**

### **Plow**

V-Plow

## **TRUCK HIGHWAY**

### **Plows**

One-Way Plow  
Two-Way Plow

### **Sanding Equipment**

### **Snow Wings**

Front Mounted  
Mid-Mounted

## **ARTICULATED**

### **Box Liners**

### **Dump Body**

### **Ejector Boxes**

### **Tail Gate**

## **HEAVY HAUL**

### **Box Liners**

## **LOADER BACKHOE**

### **Blades/Plows (Loader)**

Hydraulic Angle Blade  
Manual Angle Blade  
Power Broom  
Straight Blade  
U/V Angle Blade

### **Bucket Clamps (Backhoe)**

### **Buckets (Backhoe)**

Cleanup Bucket  
Concrete Removal Bucket  
Ditching V Bucket  
SDD Bucket  
Twist-A-Bucket  
TCB Chuck Blade  
Frost Bucket

### **Buckets (Loader)**

General Purpose Bucket

### **Couplers (Backhoe)**

Compactor/Hammer Adapter  
Manual Wedge  
Powertilt

### **Couplers (Loader)**

Hydraulic Quick Coupler  
Manual Quick Coupler  
**Fork Racks (Loader)**  
Bucket Forks  
High Visibility Pallet Fork Rack  
Pipe and Pole Fork Rack Dual Top Clamp

### **Jib Boom (Loader)**

### **Stick Mounted Ripper (Backhoe)**

## **COMPACT EXCAVATOR**

All Products

## **CUSTOM WORK**

### **Blades**

Excavator Blade

### **Buckets**

Sidewalk Bucket  
Shovel Front Conversion

### **Grapples**

Pipe Tie-In Grapple

### **Guarding**

Track Pad Re-Grouser

### **Jib Boom**

Modified Jib Boom

### **Mining Truck**

High Capacity Truck Body  
Tail Gates  
Truck Bumper

### **Pipelayer ROPS**

Pipelayer ROPS

## **TRUCK-MOUNTED CRANES**

### **23-50 Ton Models**

### **Man-Baskets**

### **Pile Drivers**

[www.weldco-beales.com](http://www.weldco-beales.com)

[www.weldco-hydralift.com](http://www.weldco-hydralift.com)





## WBM Edmonton

**12155 - 154 Street, Edmonton AB, T5V 1J3**

### **Toll Free**

General Inquiries: 1 800 661 4155

Sales Direct: 1 866 205 7158

Parts Direct: 1 866 205 7159

### **Local**

General Inquiries: 780 454 5244

Sales Direct: 780 453 5333

Parts Direct: 780 453 5329

Fax: 780 455 6770

## WBM Langley

**5770 Production Way, Langley BC, V3A 4N4**

### **Toll Free**

General Inquiries: 1 800 665 0511

Parts Direct: 1 866 533 8938

### **Local**

General Inquiries: 604 533 8933

Sales Direct: 604 533 8933

Parts Direct: 604 533 8938

Fax: 604 530 2206

## WBM Barrie

**515 Welham Road, Barrie ON, L4N 8Z6**

### **Toll Free**

General Inquiries: 1 877 320 4286

### **Local**

General Inquiries: 705 733 2668

Parts Direct: 705 733 2668 ext. 110

## WBM Regional Sales Offices

### **Las Vegas, NV, USA**

Phone: 702 544 1184

Toll Free: 1 800 665 0511

### **Santiago, Chile**

Phone: +56 9 7139 5603

Toll Free: 1 800 661 4155



## Weldco Hydra-Lift

**12155 - 154 Street, Edmonton AB, T5V 1J3**

### **Toll Free:**

General Inquiries: 1 866 WELDCO1

### **Local**

General Inquiries: 780 454 5244

Fax: 780 455 6770