

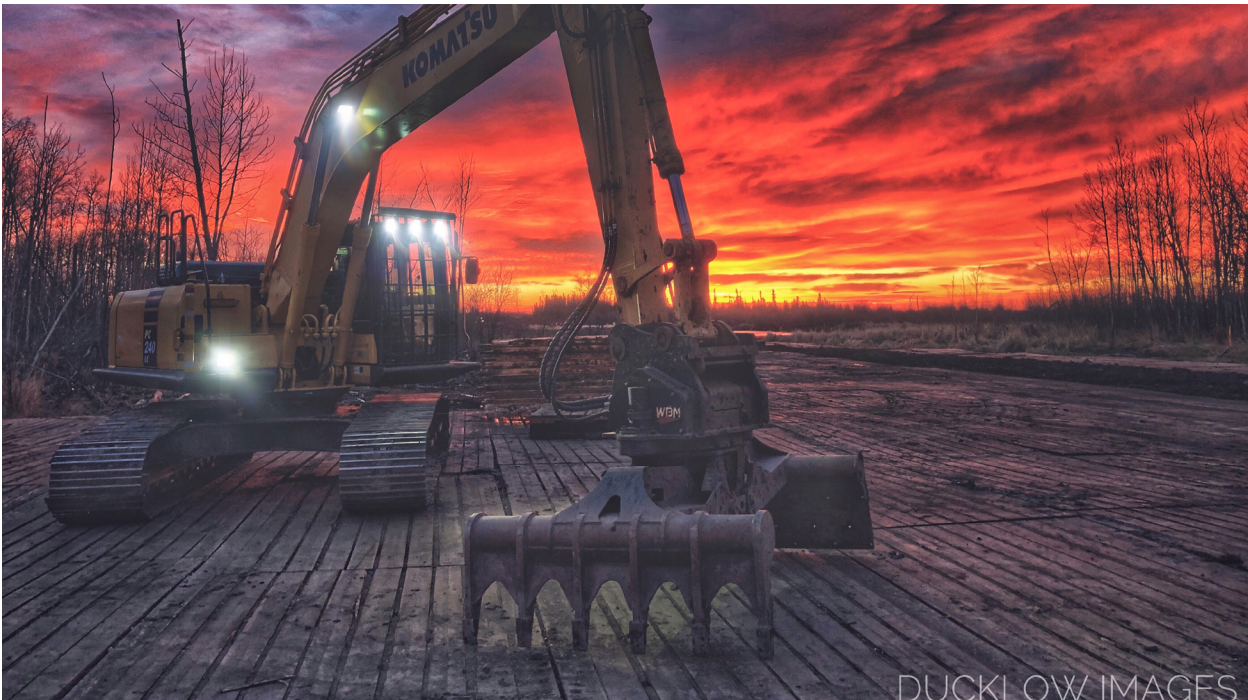


OIL&GAS PRODUCTS



Attaching Value – DESIGNING AND MANUFACTURING PREMIUM HEAVY-DUTY ATTACHMENTS, SPECIALIZED TO MEET DEMANDING REQUIREMENTS.

Weldco-Beales Mfg. (WBM) proudly *attaches value* to the forestry, construction, road maintenance, mining, and resource industries.



Since 1945, WBM has attained a strong wealth of knowledge, experience, skills, and technologies to build value for its customers. This enables the company to continuously create and deliver unique solutions. With WBM, customers can be confident that they will always receive the highest quality products.



CONTENTS

Excavator Attachments

COUPLERS	
Manual Wedge Couplers.....	4
Hydraulic Wedge Couplers.....	4
HL Series Hydraulic Wedge Couplers	4
Pin-Grabber Couplers	4
BUCKETS & BLADES	
Cleanup Buckets.....	5
Clamshell Buckets	6
Ditching Vee Buckets.....	7
Digging Buckets.....	8
Bucket Clamps (Thumbs)	8
Chuck Blades.....	9
Frost Buckets	9
Twist-a-Buckets.....	9
GRAPPLES	
Mat Grapples	10
Pipe Grapples	11
SPADES & RIPPERS	
Pipeline Spades	12
Stick Mounted Rippers	12

Wheel Loader Attachments

HITCHES	
ISO Hydraulic Master Hitch	13
Kwik-a-Tach (KAT) Master Hitch.....	13
BLADES	
Hydraulic Angle Blades	14
GRAPPLES	
Mat Grapples.....	15
Pipe & Pole Grapples	16
Large Diameter Pipe & Pole Grapples	16

Motor Grader

BLADES	
Hydraulic Angle Blades	18
Manual Angle Blades	19
RIPPERS	
Five Pocket Parallelogram Rippers.....	19
PUSH BLOCK/COUNTER WEIGHTS	
Push Block/Counter Weights	19
HITCHES	
Kwik-a-Tach Master Hitch Lift Groups	19

Pipelay Attachments

ROPS	
Pipelay ROPS (Roll Over Protective Structures)	20
SIDEBOOMS	
Sidebooms	21
CABS	
Pipelay Cabs	22

Crawler Dozer Attachments

BLADES	
Manual Angle Blades	23
ROPS	
ROPS (Roll Over Protective Structures)	23

Loader Backhoe Attachments

Weldco Hydra-Lift Cranes

Complete Product Listing

EXCAVATOR ATTACHMENTS

WEDGE COUPLERS

WBM's Wedge Couplers enable operators to use all WBM quick coupler lugged attachments on machine models within the same weight class.



MANUAL WEDGE COUPLERS

Maintaining factory tip radius and breakout force, this product allows simple quick changes between attachments.



HYDRAULIC WEDGE COUPLERS

Include a spring-activated safety locking mechanism, cylinder lock valve and standard audible warning when disengaged.

HL SERIES HYDRAULIC WEDGE COUPLER

The WBM Patented HL Series Hydraulic Wedge Coupler incorporates a hydraulically controlled safety lock mechanism so the operator does not have to leave the cab.



PIN-GRABBER COUPLERS

WBM Triple Lock 'Pin-Grabber' Couplers incorporate enhanced safety features for fast attachment change-out from the comfort and safety of your machine. The dead lock saddle prevents the possibility of the front lock releasing in the event of a hydraulic failure.

CLEANUP BUCKETS

WBM's Cleanup Buckets are designed for loose and bulk loading applications as well as finish grading. This product reduces cycle times by optimizing machine's breakout and crowd forces. Its dual taper design enables easy cleanout. Cleanup Buckets also have larger capacities and widths versus Heavy Duty Digging buckets.

FEATURES & BENEFITS

- Drilled for bolt-on cutting edges
- Dual tapered design for easy clean out
- Available in a full range of sizes
- Reduces cycle times by optimizing machine's breakout and crowd forces
- Larger capacities and widths versus Heavy Duty Digging buckets
- Smooth finish grades





CLAMSHELL BUCKETS

WBM’s Excavator Clamshell Buckets are versatile tools, ideal for handling large quantities of various material densities with ease.

FEATURES & BENEFITS

- Performs digging, moving, loading, and piling operations
- Pin-on or Quick Coupler connections
- 360° continuous rotation with a single high torque drive motor for load holding and handling
- Configuration versatility to handle a variety of applications
- Large diameter rotation bearing for power tilting
- Interchangeable bucket halves between series

STANDARD EQUIPMENT

- Single drive high torque motor
- 2 port hydraulic swivel
- Quick change or pin-on style lugging
- High-pressure cushioned cylinders

OPTIONAL EQUIPMENT

- Various torque models to choose from (dual high torque drive motors)
- Power Clam or Dangling Clam
- Bolt-on cutting edge or replaceable teeth

MACHINE SIZE	MODEL	BEARING DIAMETER	WIDTH	OPENING	CAPACITY (CU. YDS.)	Weight (lbs.)
Series EX 200	XPC-500B	27.1"	36"	90"	3/4	4,200
Series EX 250	XPC-500B	27.1"	40"	90"	7/8	4,300
Series EX 300	XPC-600B	33.6"	42"	115"	1-1/4	5,200
Series EX 400	XPC-600B	33.6"	48"	115"	1-1/2	5,400

DITCHING VEE BUCKETS

WBM’s Excavator Ditching Vee Buckets are specially designed for pipe-laying applications to enable users to dig at a safe side-slope angle while generating a narrow and smooth ditching floor.

FEATURES & BENEFITS

- Custom designed taper
- One piece conical side plates produce trapezoidal cut
- Various standard widths and slope angles
- Removes only the minimum material required for ditching
- Reduces the amount of fill material
- Excellent clean-out capability
- Efficient use of time moving material for pipe-laying

STANDARD SPECIFICATIONS

- 100,000 psi yield WBM coupler lugging
- Abrasion resistant leading edge, base edge, and horizontal wear bars
- Reinforced corners

OPTIONAL EQUIPMENT

- Teeth and adapters
- Bolt-on cutting edge

EXCAVATOR DIGGING BUCKETS



HEAVY DUTY DIGGING BUCKETS

WBM’s Heavy Duty Digging Buckets are designed for general purpose and heavy-duty digging applications. Available with optional side cutters, side bar protectors and leading edge protectors.



EXTREME SERVICE BUCKETS

WBM’s Extreme Service Bucket’s tough, durable design is well-suited for work in harsh, difficult terrain and other heavy-duty digging applications. These buckets have all the qualities of a Heavy Duty Digging Bucket, but with increased wear resistance.



Shown with optional chocky blocks

EXTREME SERVICE ROCK BUCKETS/ ROAD BUILDER BUCKETS

WBM Extreme Service Rock Buckets (Road Builder Buckets) are impact/abrasion resistant, designed with even further increased wear resistance to withstand extreme wear conditions in rock and quarry environments.

BUCKET CLAMPS (THUMBS)

WBM’s Bucket Clamps can be added to any bucket, blade or rake to increase its ability to grab and move objects with precision.

FEATURES & BENEFITS

- Heavy-duty construction maximizes service life
- Adds versatility for forestry, construction, demolition and mining applications
- Increases machine’s efficiency



TWIST-A-BUCKETS

WBM’s Excavator Twist-a-Buckets are designed to enhance machine versatility for slope excavation.

FEATURES & BENEFITS

- Boxed section hinge points
- Drilled base edge
- Modified profile similar to digging buckets
- Abrasion resistant leading edge, base edge, and horizontal wear bars
- Optional reversible bolt-on cutting edge (flat or serrated)
- High capacity reducing cycle times
- Slope excavation without repositioning machine
- 45° tilt left and right

CHUCK BLADES

WBM’s Excavator Chuck Blades are designed to increase machine versatility for sloping and grading.

FEATURES & BENEFITS

- Abrasion resistant cheek plates and base edge supports
- Bolt-on cutting edge with angled end bits
- Excellent in clay and sticky materials
- 45° left and right tilt



FROST BUCKETS

WBM’s Frost Buckets are designed to penetrate frozen or hard digging applications.

FEATURES & BENEFITS

- Extra heavy-duty construction
- Utilizes application specific teeth (sharp, twin sharp) and adapters
- Available in a full range of sizes
- Increases penetration into frozen material by focusing penetration force on the middle tooth





MAT GRAPPLES

The WBM Mat Grapple is designed to play the critical role of removing and placing rig mats, used to extend the drilling season and to protect the environment.

FEATURES & BENEFITS

- Ability to remove, place, stack and load rig mats quickly and efficiently
- 360° of continuous rotation
- Either pin-on or QC lugging
- Single Eaton VIS 60.5 cu.in. rotation motor
- Large diameter rotation bearing
- High pressure cylinders c/w cushions
- Heavy duty jaws designed to take on any application
- One jaw has welded on edge to clean off mats
- One jaw has replaceable teeth to pry up mats
- Round bottom tube to distribute stresses
- High visibility construction
- Large jaw open stops to allow prying out of mats

OPTIONAL EQUIPMENT

- Two Eaton VIS 60.5 cu.in rotation motors
- Optional G.E.T
- Different brands of teeth
- Weld on serrated edge
- Valve in Head (2 section)
- Heavy Duty Tilt Cylinder with anchor
- Spikes (processor teeth)



PIPE GRAPPLES

WBM's Excavator Pipe Grapples allow easy and safe handling of the pipe.

FEATURES

- 360° rotation
- Rubber-lined jaws
- Self-aligning tilt
- Jaw sets can be adjusted for different pipe sizes

OPTIONAL EQUIPMENT

- With the pipe tie-in option, the remote-controlled alignment of pipeline joints to facilitate welding and inspection is simplified. The hydraulic side shift can then be used to pull pipe ends together.
- Valve-in-head hydraulics



PIPELINE SPADES

WBM's Excavator Pipeline Spades are designed for removing soil from below pipelines and utilities without damaging the line.

FEATURES & BENEFITS

- Available for any excavator size
- Pin-on or quick coupler mounting
- Spade dimensions: 1" x 36" x 74"
- Easier and safer to use than a bucket
- Enables efficient soil removal for pipeline maintenance inspections and new line construction
- Less chance of damaging pipe because of improved visibility and manoeuvring



STICK MOUNTED RIPPERS

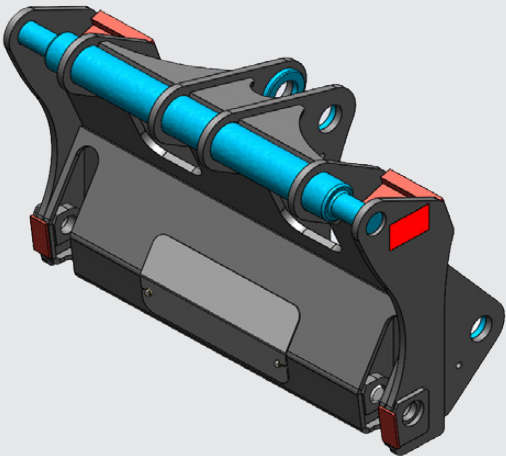
WBM's Stick Mounted Rippers are effective for preparing frozen ground, rocky soil or shale for easier and faster excavation of material. Various penetration depths are available and the ripper tooth is replaceable.

WHEEL LOADER ATTACHMENTS

ISO HYDRAULIC MASTER HITCH (ISO 23727 STYLE KAT)

FEATURES & BENEFITS

- Improved visibility with revised shape and open design
- Increased range of interchangeability with a wider range of models and compatible manufacturers
- Similar in weight to our current optimized wheel loader KAT systems
- Designed to recognize machine performance characteristics by keeping the load as close to the wheel loader as possible
- Designed to fit wheel loaders ranging in class size from WL100 to WL200



KWIK-A-TACH (KAT) MASTER HITCH

WBM's (KAT) Master Hitch is the centerpiece product that increases versatility of wheel loaders by allowing quick and easy inter-changeability of attachments. By installing KAT hooks or lugs in place of the factory of OEM pin-on lugging on an attachment, the KAT Master Hitch is capable of changing the attachment utilizing a hydraulic or manual lock pin system.

FEATURES & BENEFITS

- Designed to pin on the boom and linkages using OEM specifications
- Utilizes a top round bar and horizontal lock pin for lug hook-up
- Hydraulically actuated or manually operated lock pins
- Heavy-duty frame
- One double acting cylinder
- **Optional:** a four hook KAT Master Hitch is available to help stabilize large attachments
- **Optional:** Third Valve Power Beyond Kit - a method of using the loader's 3rd valve to operate both the cylinder and a hydraulic function on the attachment



HYDRAULIC ANGLE BLADES

WBM's Hydraulic Angle Blades are the ultimate attachment for enhanced material control in Wheel Loader dozing, grading, and general clearing applications.



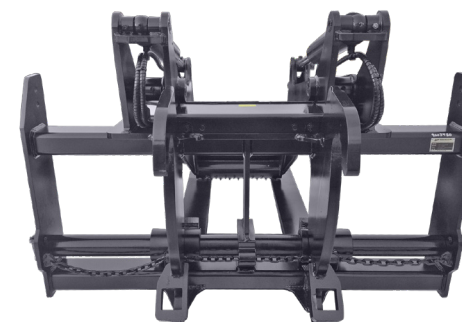
MAT GRAPPLES

The improved "Max-View" WBM Mat Grapple for wheel loaders is used to remove and place mats, which protect the environment and extend the construction season. This enables safe access for crews and heavy equipment.



FEATURES & BENEFITS

- Proven and tested moldboard profiles that provide optimum material carrying characteristics
- Maximum blade widths and heights to match application and machine capability
- Dual hydraulic angling cylinders provide 30° of left or right angling, controlled from the cab with 3rd valve function
- Adjustable skid shoes that increase cutting edge wear life and grading characteristics
- Center-drilled reversible bolt-on edges
- Available with Kwik-a-Tach or OEM pin-on lugs
- In the straight blade position, the linkage enables the operator to pitch the blade forward or backward to alter the grading or cutting ability of the blade



FEATURES & BENEFITS

- Short back fork tines improve operator visibility of fork tines at ground and deck level
- Low profile fork rack provides enhanced view to tine tips
- Tall side plates provide increased load stability when transporting multiple mats
- Full length fork positioning uses chain with a quick pin to support multiple fork tine positions
- Larger hanger shaft design supports maximum mat carrying capability
- Cylinder hoses routed through frame for improved protection
- Removeable cover plate helps protect jump hose connections
- Box-type overarm construction decreases weight, improves durability and visibility, while providing interference 'free' rollback
- Available with WBM KAT or OEM standard lugging
- Wide overarm with gripping teeth
- Standard fork tine swing lock system
- Standard mat grapple comes without lights, optional bolt-on light kit available

PIPE AND POLE GRAPPLES

WBM's Pipe and Pole Grapples are one of the most versatile of pipe grapples. The design enables small or large pipes to be held and stabilized against the fork tines. Various sizes and configurations are available to match machine size, lifting requirements and specific applications.



FEATURES & BENEFITS

- Rack widths range from 84" to 120"
- Assembled and mounted dual overarms with auxillary 'kickers'
- 2500 psi crossover relief to protect the cylinders
- Hydraulic hose routing to crossover relief valve
- Hoses concealed within frame and overarms
- High strength (100,000 psi yield) steel fork tines
- Swing-out locks
- Kwik-A-Tach lugs
- Alloy chrome plated pins
- Excellent visibility through frame
- Improved strength to weight ratio increases machine payload
- Superior service life of rotating members
- Enhanced durability and attachment life
- Increased rack width provides greater stability

OPTIONAL EQUIPMENT

- Standard taper, full taper, and polished tine profiles



Large Diameter Pipe & Pole Grapples also available (shown left).

MOTOR GRADER ATTACHMENTS

HYDRAULIC ANGLE BLADES

WBM's Hydraulic Angle Blades are used in applications where snow removal, land levelling, grading, and dozing are required. With 30° of hydraulic left or right angle capability, the operator is provided with increased material control during conventional dozing operations.



MANUAL ANGLE BLADES

WBM's Motor Grader Manual Angle Blades can be used for snow removal, land levelling, grading, and dozing. The blade can be pinned straight, 25° left or right. The design utilizes an "on-board" link that is stored on the blade when in the straight position, and pinned in place when angled left or right.



FIVE POCKET PARALLELOGRAM RIPPERS

WBM's Five Pocket Parallelogram Rippers are used for ripping or breaking compacted ground prior to grading. This attachment is typically used in road building applications where the Grader first breaks the ground and then grades the 'ripped' material.



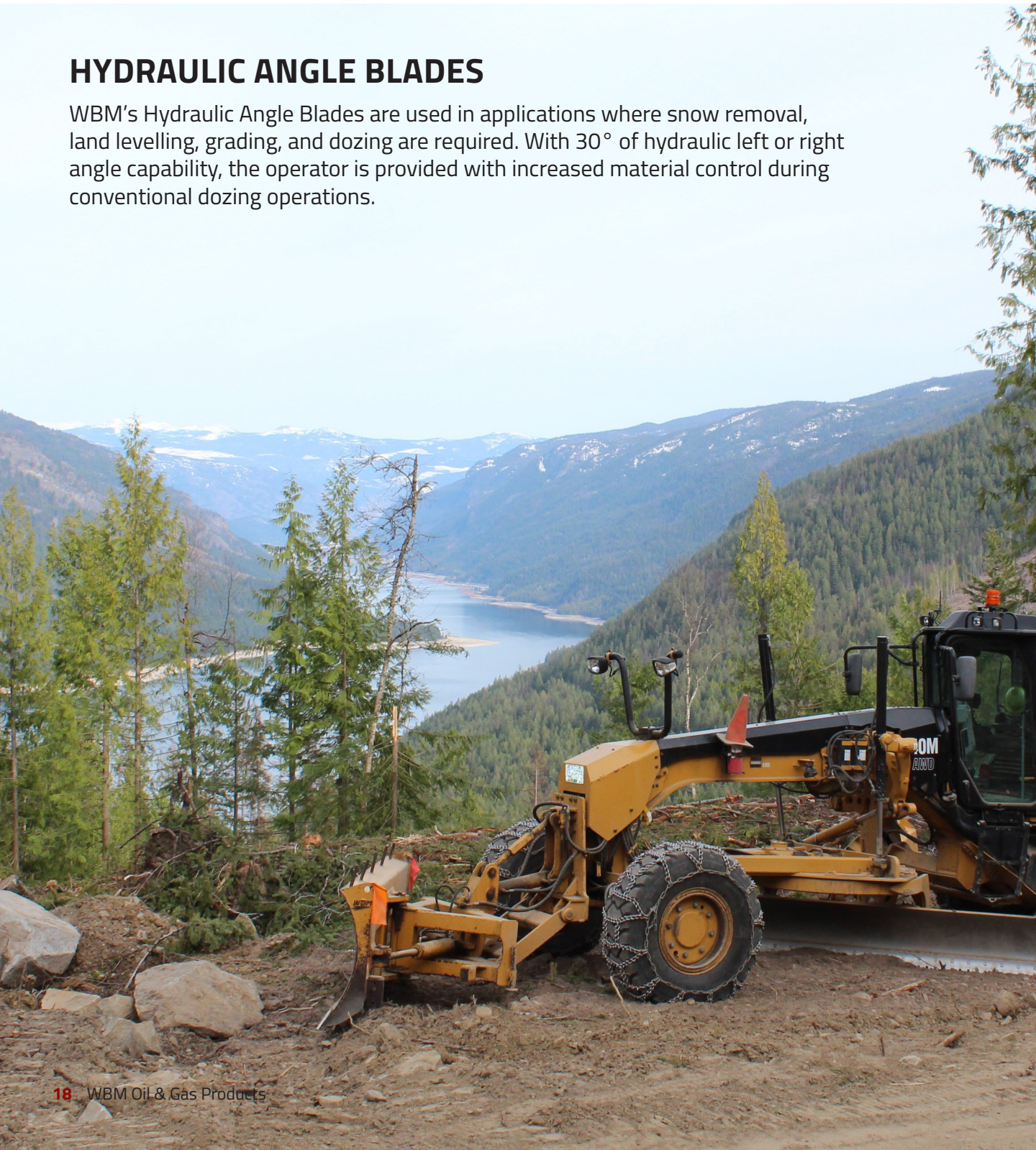
PUSH BLOCK/COUNTER WEIGHTS

WBM's Push Block/Counter Weights have a dual purpose. As a push block, the attachment acts to protect the front of the Grader when pushing other machines. This attachment will also increase traction of the front wheels, if the Grader is equipped with front wheel drive, and increase steering capability when grading.



KWIK-A-TACH (KAT) MASTER HITCH LIFT GROUP

WBM's KAT Master Hitch Lift Group is a quick and convenient way of switching attachments on a Motor Grader. Attachments with WBM quick coupler lugging can be hydraulically or manually attached within minutes.



PIPELAYER ATTACHMENTS



PIPELAYER ROPS (ROLL OVER PROTECTIVE STRUCTURES)

WBM's Pipelayer ROPS provide better operator protection in the event of a roll-over.



FEATURES & BENEFITS

- Destruction tested and approved
- Low temperature impact material used for closed box section construction
- Easy access to operator's platform
- No modifications to Pipelayer frame or draw works
- Compatibility to allow for mounting of rear attachments
- ISO 3471 certification (adherence to CE requirements)
- Rear screen bosses, wiring conduit, hand holds and 4 light mounts

OPTIONAL EQUIPMENT

- Rear Screens (necessary if winch installed)
- Lights
- Wiring Harness
- Crating for international shipments
- Seatbelts
- Installation at WBM facilities



SIDEBOOMS

WBM's Sidebooms are engineered and constructed to exacting standards. Both OEM standard Sideboom replacements and customized Sidebooms are available. With a variety of sizes available, this product can be attached to any Pipelayer to meet your pipeline specifications and needs.



PIPELAYER CABS

WBM's Pipelayer Cabs are designed to enhance operators' visibility, productivity, ergonomics and protection.

FEATURES & BENEFITS

- High visibility right-hand side door window
- Sliding windows right-hand side rear and left-hand side rear
- Right-hand side front pop out winch access window c/w over centre handle
- Rear window escape c/w removable window rubber
- Tinted safety glass windows
- Intermittent windshield wipers c/w washers (2) door (1) rear (1) front
- Heater air-conditioner, 36,000 BTUs heating and 28,500 BTUs cooling
- Auxillary floor heater, 20,000 BTUs heating
- Pressurized cab c/w fresh air intake filter
- Ceiling defrost ducts on all windows
- Ceiling circulation/defrost fan
- Gray sound suppression/head liner
- (1) interior dome light, (4) halogen lights mounted on front
- Fused control panel for heater air-conditioner, lights and windshield wipers/washers
- Falling object protection structure (FOPS)
- Door open holdback
- (2) rear-view mirrors
- Cup holder, Floor mat, Coat hook
- Maximized jobsite safety through falling object protection (FOPS) and other safety features
- Improved productivity due to high visibility gained from strategic locations and sizes of windows, mirrors, and lights
- Enhanced comfort with variable climate controls, fresh air intake filter, and gray sound suppression

CRAWLER DOZER ATTACHMENTS

MANUAL ANGLE BLADES

WBM's Crawler Dozer Manual Angle Blades are excellent for clearing material in the oil & gas industry.



There is also an optional Dual Tilt Cylinder Kit, which includes cylinders, hydraulic hoses, junction block and guarding. Installing this kit makes the blade fully hydraulic. As a result, the operator is able to remain in the comfort of the machine's cab, optimizing time and productivity.

FEATURES & BENEFITS

- Standard or low ground pressure gauge
- Compact design
- C-frame with hydraulic tilt and trunnions
- Increased visibility and safety
- Increased machine balance and performance



ROPS (ROLL OVER PROTECTIVE STRUCTURES)

WBM's ROPS, complete with FOPS (falling object protective structure) provide better operator and machine protection in the event of a roll-over. Only low temperature impact material is used for its closed box construction. Canopies install directly into OEM factory frame brackets. All ROPS prototypes are destruction tested and approved. Optional standard or bullhorn sweeps, third columns, rear and side screens and roof extensions are available for extra protection.

LOADER BACKHOE ATTACHMENTS

THE FOLLOWING PRODUCTS ARE ALSO AVAILABLE AS LOADER BACKHOE ATTACHMENTS:

- Chuck Blades
- Cleanup Buckets
- General Purpose Bucket
- Hydraulic Angle Blades
- Jib Boom
- Kwik-a-Tach Master Hitch Lift Group
- Manual Wedge Couplers
- Stick Mounted Rippers
- Twist-A-Buckets
- V-Bottom Buckets



TRUCK MOUNTED CRANES



Weldco Hydra-Lift truck-mounted cranes are reputable for their tremendous lift strength and durability. Proudly manufactured in Canada with the highest degree of quality and workmanship, Hydra-Lift continuously provides customers with a wide variety of safe and reliable lifts.

Crane model offerings have capacities ranging from 8,000 lbs to 82,000 lbs at a 10 ft loaded operating radius with boom lengths from 38 ft to 100 ft (8-ton to 50-ton capacities). Jibs are available in

orientable and rigid styles to extend the reach of the crane to an amazing 161 ft tip height.

If a standard crane configuration does not meet your requirements, our team of talented engineers will work with you to create a crane and truck package that suits your needs and budget.

Please visit www.weldco-hydralift.com for more information.

COMPLETE PRODUCT LISTING

EXCAVATOR & LOG LOADER

- Booms**
Boom Lift Cylinder Adapter Kit
Long Reach Front
Quick Extension Stick

Brush Cutter

- Rotary Cutter (ERC)
Rotary Flail (ERF)

Bucket Clamps (Thumbs)

Buckets

- Cleanup Bucket
Concrete Removal Bucket
Ditching V Bucket
Extreme Service Bucket
Extreme Service Rock Bucket
HDD Bucket
Road Builder Bucket
TCB Chuck Blade
TCB Twist-A-Bucket
Frost Bucket

Couplers

- Compactor/Hammer Adapter
Hydraulic Wedge
Manual Wedge
Pin-Grabber
Powertilt

Grapples

- Butt-n-Top Grapple
Clam Grapple
Demolition/Contractors Grapple
HCL Grapple
Heel Grapple
Mat Grapple
Mag Grab Grapple
Orange Peel Grapple
CTL Dangle-Head Grapple

Guarding and Cabs

- Cab Riser and Catwalks
Forestry Cab
FOPS (Falling Object Protection System)
Rock and Underhouse Guards

Rakes

- Brush Rake
Mounding Rake

Stick Mounted Rippers

WHEEL LOADER

Blades/Plows

- Hydraulic Angle Blade
Hydraulic Angle Snow Blade
Hydraulic Winged Snow Blade
Ice/Snow Scarifier
Manual Angle Blade
Moldboard Endgate Snow Plows
One Way Plow
Power Broom
Runway Plow (Ramp Hog)
Snow Wings
Straight Blade
U/V Angle Blade

Buckets

- Bale/Silage Bucket
Coal Seam Bucket
Coal Bucket (Stockpiling)
Corral Bucket
Fertilizer Bucket
General Purpose Bucket
Light Material Bucket
Multi Purpose Bucket (4 in 1)
Rock Bucket
Rock Tine Bucket
Roll Out Bucket
Side Dump Bucket
Spreader Bucket
Wood Chip Bucket

Cable Reeler

Couplers

- KAT Master Hitch
WLKAT Series KAT Master Hitch

Fork Racks

- Bucket Forks
Forklift Masts
High Visibility Pallet Fork Rack
Peeler Fork
Pipe and Pole Fork Rack

Grapples

- CTL Log Grapple
High Capacity CTL Log Grapple
Highlift Grapple
Log and Lumber Forks
Mat Grapple
Pipe and Pole Grapple
Tree Length Log Grapple

Jib Boom

Tire Handler

MOTOR GRADER

Blades

- Hydraulic Angle Blade
Hydraulic Angle Snow Blades
Manual Angle Blade
Straight Blade
U/V Angle Blade

Counter Weight/Push Block

Cutting Edge Rack

Lift Group Front

- Integral Lift Group
KAT Master Hitch Lift Group

Parallelogram Ripper

Plows

- One Way Plow
V-Plow

Snow Wings

- Hydraulic Mast Snow Wing
Hydraulic Mastless Snow Wing

CRAWLER DOZER

Blades

- Coal Blades
Chip Blade
Manual Angle Blade
6 Way Power Angle/Tilt Blade

Forestry Attachments

- Arches
Guarding

Parallelogram Ripper

Pipelayer ROPS

Rakes

Roll Over Protective Structures (ROPS)

Sideboom

SCRAPER

Plow

- V-Plow

TRUCK

HIGHWAY

Plows

- One-Way Plow
Two-Way Plow

Sanding Equipment

Snow Wings

- Front Mounted
Mid-Mounted

ARTICULATED

Box Liners

Dump Body

Ejector Boxes

Tail Gate

HEAVY HAUL

Box Liners

LOADER BACKHOE

Blades/Plows (Loader)

- Hydraulic Angle Blade
Manual Angle Blade
Power Broom
Straight Blade
U/V Angle Blade

Bucket Clamps (Backhoe)

Buckets (Backhoe)

- Cleanup Bucket
Concrete Removal Bucket
Ditching V Bucket
SDD Bucket
Twist-A-Bucket
TCB Chuck Blade
Frost Bucket

Buckets (Loader)

- General Purpose Bucket

Couplers (Backhoe)

- Compactor/Hammer Adapter
Manual Wedge
Powertilt

Couplers (Loader)

- Hydraulic Quick Coupler
Manual Quick Coupler

Fork Racks (Loader)

- Bucket Forks
High Visibility Pallet Fork Rack
Pipe and Pole Fork Rack Dual Top Clamp

Jib Boom (Loader)

Stick Mounted Ripper (Backhoe)

COMPACT EXCAVATOR

- All Products

CUSTOM WORK

Blades

- Excavator Blade

Buckets

- Sidewalk Bucket
Shovel Front Conversion

Grapples

- Pipe Tie-In Grapple

Guarding

- Track Pad Re-Grouser

Jib Boom

- Modified Jib Boom

Mining Truck

- High Capacity Truck Body
Tail Gates
Truck Bumper

Pipelayer ROPS

- Pipelayer ROPS

TRUCK-MOUNTED CRANES

23-50 Ton Models

Man-Baskets

Pile Drivers

- www.weldco-beales.com
www.weldco-hydralift.com



WBM Edmonton

12155 - 154 Street, Edmonton AB, T5V 1J3

Toll Free

General Inquiries: 1 800 661 4155

Sales Direct: 1 866 205 7158

Parts Direct: 1 866 205 7159

Local

General Inquiries: 780 454 5244

Sales Direct: 780 453 5333

Parts Direct: 780 453 5329

Fax: 780 455 6770

WBM Langley

5770 Production Way, Langley BC, V3A 4N4

Toll Free

General Inquiries: 1 800 665 0511

Parts Direct: 1 866 533 8938

Local

General Inquiries: 604 533 8933

Sales Direct: 604 533 8933

Parts Direct: 604 533 8938

Fax: 604 530 2206

WBM Barrie

515 Welham Road, Barrie ON, L4N 8Z6

Toll Free

General Inquiries: 1 877 320 4286

Local

General Inquiries: 705 733 2668

Parts Direct: 705 733 2668 ext. 110

WBM Regional Sales Offices

Las Vegas, NV, USA

Phone: 702 544 1184

Toll Free: 1 800 665 0511

Santiago, Chile

Phone: +56 9 7139 5603

Toll Free: 1 800 661 4155

Spokane, WA, USA

Phone: 253 383 0180

Toll Free: 1 800 665 0511



Weldco Hydra-Lift

12155 - 154 Street, Edmonton AB, T5V 1J3

Toll Free:

General Inquiries: 1 866 WELDCO1

Local

General Inquiries: 780 454 5244

Fax: 780 455 6770