

COAL SEAM BUCKET

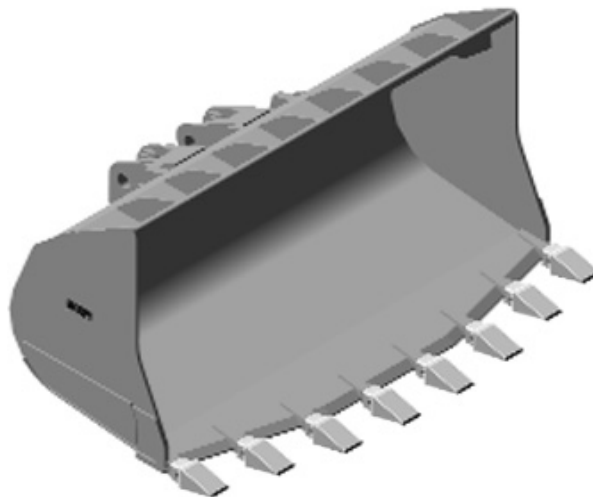
WBM's Coal Seam Bucket is used for extracting coal from a bank or seam. Due to the rugged nature of coal seam extraction, the bucket is designed using high-strength and abrasion resistant steel as its primary material. The design utilizes a spade nose base edge to increase penetration capability into the bank or seam.

FEATURES AND BENEFITS

- Spade nose base edge design
- Tapered floor construction
- Increased spill guard length
- Bucket capacities are designed per SAE J742 and are based on heaped capacities
- Extreme or heavy duty GET hardware
- Available with OEM pin on lugs
- Increased durability and wear life from high strength and abrasion resistant material
- Spade nose base edge increases penetration into the seam or bank
- Tapered floor construction provides excellent loading characteristics
- The extended spill guard provides material support and prevents material 'spillover' that can cause machine damage

STANDARD SPECIFICATIONS

- 450 Brinell base edge, leading edge, exterior cheek plate, interior shell liner, side seam wear strip, and bolt-on/weld-on heel plates
- 100,000 psi shell
- Reinforced 1 piece under shell support and rib configuration
- OEM pin-on lugging



WELDCO-BEALES MFG.

SPECIALISTS IN ATTACHMENT DESIGN AND MANUFACTURING

www.weldco-beales.com