

HIGH VISIBILITY FORKLIFT MAST



WBM's Heavy Duty Forklift Masts are designed for conversion of wheel loaders for rough terrain forklift applications.

FEATURES AND BENEFITS

- High visibility two stage mast upright with high strength twin I-beam rails
- Trolley frame center opened for visibility
- Low profile carriage
- Underslung side shift cylinder
- 18" side shift (+/-) 9" per side with U-Shaped upper sliders
- Roller or Polyslide guides that follow different tracks on inner and outer uprights
- Anti-Load Drop Valve (flow-restricted lowering speed)
- Outside mounted load chains
- Spherical bearings in mounting bracket
- Sealed roller bearings in chain and hose sheaves
- Bolt-style trolley chain anchors
- Standard single acting lift cylinders - optional double acting
- Standard 15,000 - 30,000lb lift capacities at 24" load centers
- Special application masts available (40,000-60,000lbs)

OPTIONS

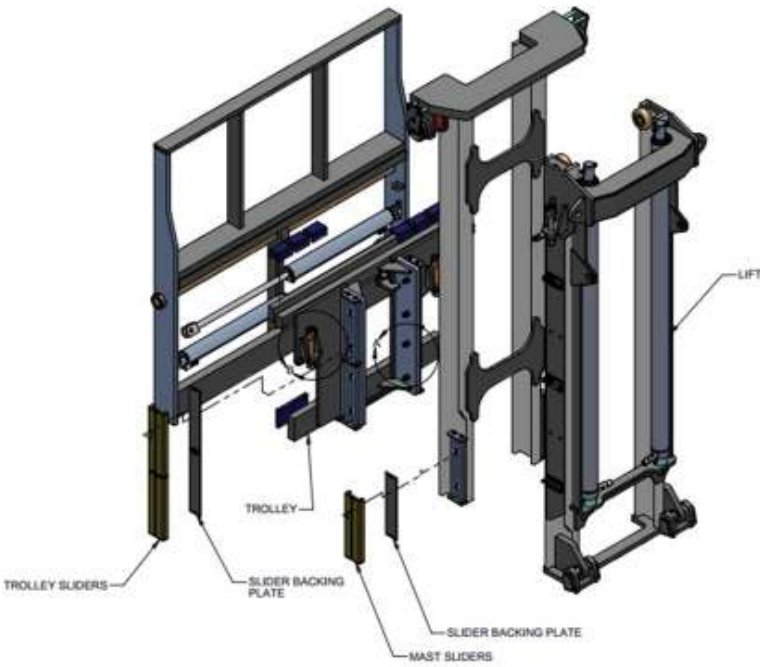
- Tilt Cylinders
- Lights
- Fork sizes of various sections, lengths, and configurations
- Extended height backrest

OTHER ATTACHMENT OPTIONS

- Lumber hold down clamps
- Fork length limiter
- Pipe and Pole grapple

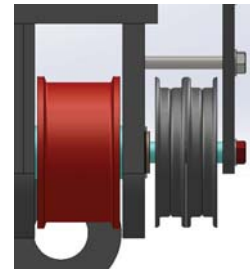
Continued on next page »

HIGH VISIBILITY TWO-STAGE UPRIGHTS



TWIN I-BEAM MAST RAIL DESIGN

- 70,000 psi rolled mast rail material

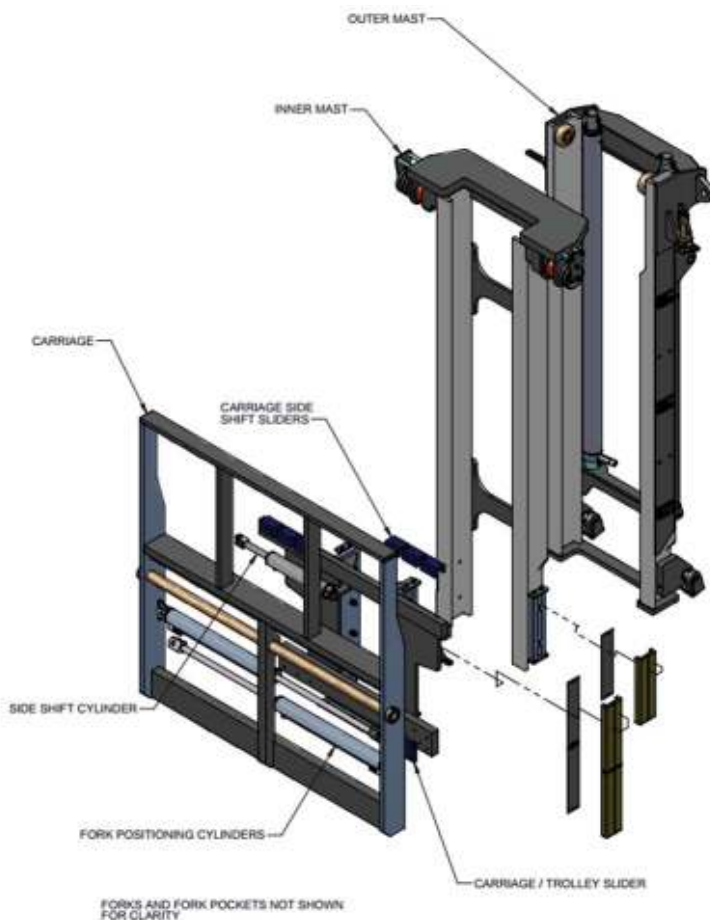


OUTER CHAIN / HOSE SHEAVE DESIGN

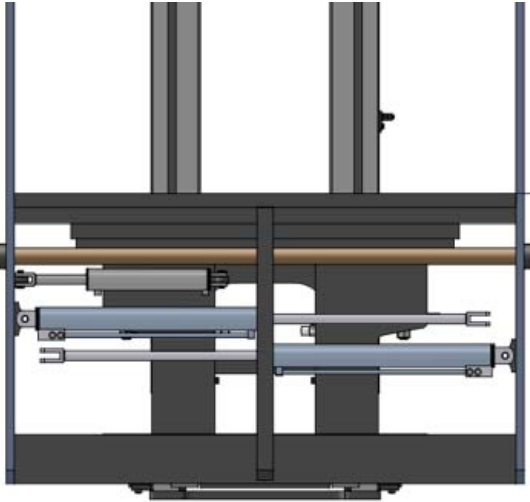
- Sealed roller bearings in sheaves
- Retaining bolt will ensure hoses do not jump off sheaves

CARRIAGE OPTIONS AVAILABLE

- Side shift
- Roller or Polyslide guides
- Single fork positioning
- Dual simultaneous
- Independent fork positioning
- Fork tine sizes to suit application
- Fork Pockets:

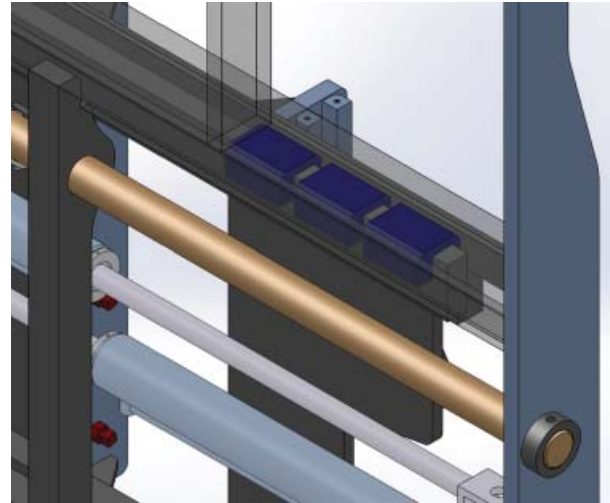


NEW CARRIAGE DESIGN FEATURES



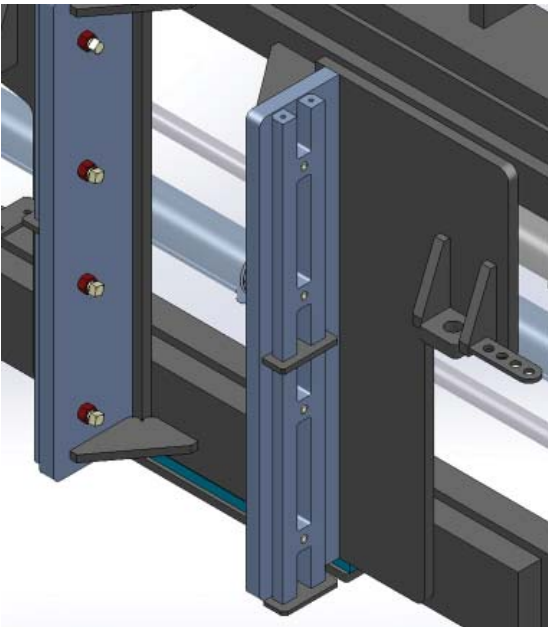
LOW PROFILE CARRIAGE WITH UNDERSLUNG SIDESHIFT CYLINDER

- Improved visibility



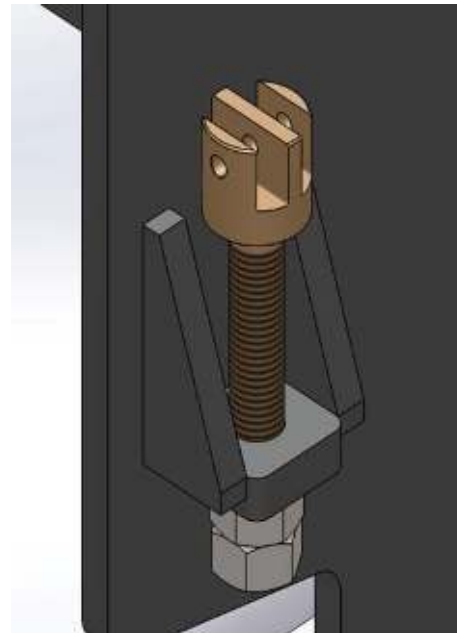
REPLACEABLE SIDE SHIFT SLIDER BLOCKS

- The trolley is wider to better support fork carriage in fully side shifted position



ADJUSTING BOLTS FOR TROLLEY SLIDERS

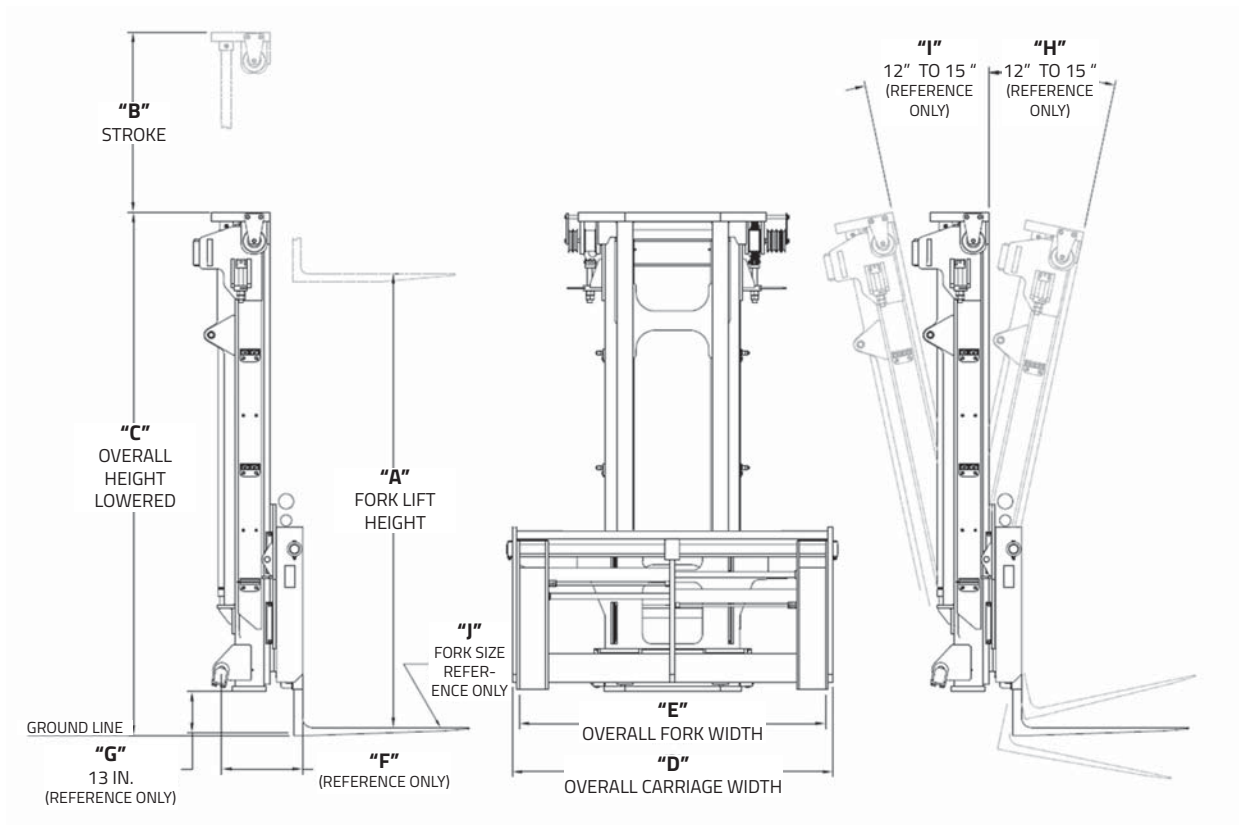
- Bolts added for easy adjustment of trolley to mast clearance, shims can also still be added if needed
- Synsteel wear blocks have been replaced with a UHMW based material, which has better wear properties



CHAIN ANCHOR BOLT-STYLE

- Bolt-style chain anchors allow more adjustment of chain and are easily replaceable

SPECS



CAPACITY (LB.) @ 24in. LOAD CENTER	15,000	20,000	25,000	30,000
A (in.)	170	182	194	194
B (in.)	85	91	97	97
C (in.)	144	148	154	154
D (in.)	96	96	96	96
E (in.)	86	86	86	86
F (in.) REF. ONLY	24.5	24.5	24.5	24.5
G (in.) REF. ONLY	Suggested ground clearance varies upon Wheel Loader			
H (deg.) REF. ONLY	Suggested tilt forward varies upon Wheel Loader			
I (deg.) REF. ONLY	Suggested tilt rearward varies upon Wheel Loader			
Fork Size (in.) REF ONLY	2 X 7	2 X 10	2.5 X 7	2.75 X 8

Updated June 2017