

TREE LENGTH LOG GRAPPLE

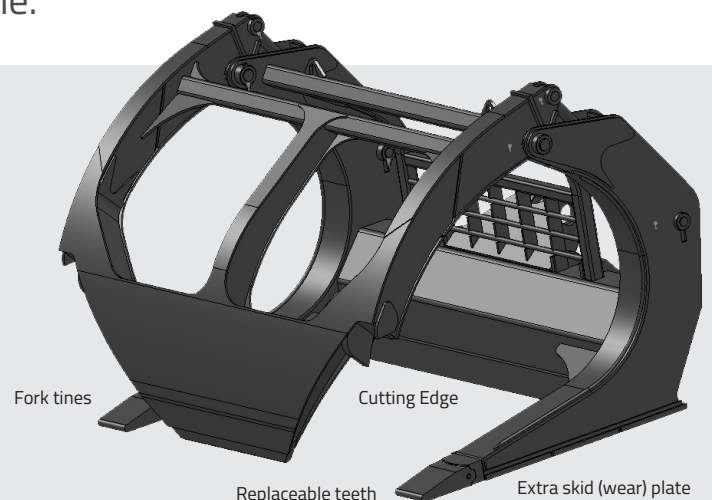


3-tine grapple shown with extra bottom wear plate and split overarm (clamp)

WBM Tree Length Log Grapples have been recognized as the staple in unloading and loading tree length wood, with excellent handling characteristics for millyard and brush applications. These grapples are capable of maximizing payload while maintaining excellent load stabilization in rough or uneven terrain, and are versatile to handle large loads or sorting one log at a time.

FEATURES AND BENEFITS

- Heavy duty welded box-type construction of overarm and shoe
- Open center section with guarding
- Enclosed dual overarm cylinders
- Weld-on wear plate on shoes
- Excellent strength to weight ratio in design maximizes payload
- Increased visibility for operator, and appropriate guarding to prevent damage
- Increased wear resistance to shoe weldment
- Includes "log-dogs", or tangs for handling single broken logs



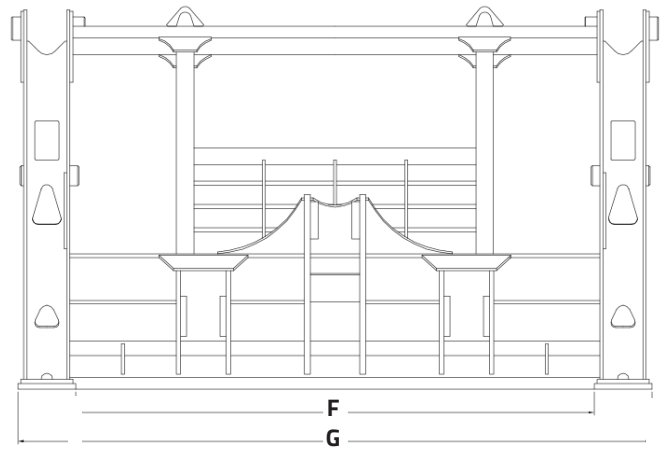
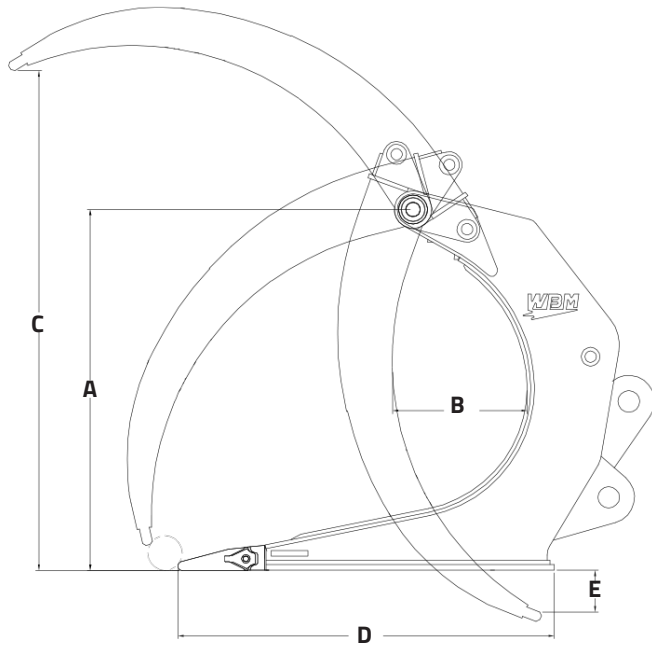
STANDARD EQUIPMENT

- Heavy duty, dual hydraulic cylinders
- Pin-on replaceable tips
- OEM pin-on lugs
- Replaceable bottom wear plate

OPTIONAL EQUIPMENT

- High lift lugs for high reach capabilities
- WBM KAT lugging
- 3 and 4 tine options for handling cut to length wood as well as tree length
- Bolt-on cutting edge that acts as a dozer blade for yard cleaning
- Weld-on replaceable tips

Continued on next page »



MODELS

DIMENSIONS

MACHINE SERIES	WBM MODEL #	DESCRIPTION	WEIGHT (lbs)	A (in)	B (in)	C (in)	D (in)	E (in)	F* (in)	G (in)
WL150	WL150-TLG-9.5-2T	9.5 sq.ft. c/w 2 tines, extra wear kit (EWK) (previously M15)	2,900	46	14	70	48	5	72	82
WL150	WL150-TLG-9.5-3T	9.5 sq.ft.; c/w 3 tines	3,250						33.5	
WL150	WL150-TLG9.5-4T	9.5 sq.ft.; c/w 4 tines	3,500						20.66	
WL200	WL200-TLG13.25-2T	13.25 sq.ft.; c/w 2 tines, EWK (previously M23)	4,800	55	16	81	57	8	83	95
WL200	WL200-TLG13.25-3T	13.25 sq.ft.; c/w 3 tines	5,000						38.75	
WL200	WL200-TLG13.25-4T	13.25 sq.ft.; c/w 4 tines	5,200						29	
WL250	WL250-TLG18.5-2T	18.5 sq.ft.; c/w 2 tines, EWK (previously M26)	5,900	62	22	86	65	7	90	110
WL250	WL250-TLG18.5-3T	18.5 sq.ft.; c/w 3 tines	6,950						40	
WL250	WL250-TLG18.5-4T	18.5 sq.ft.; c/w 4 tines	7,300						23.33	
WL300	WL300-TLG22.5-2T	22.5 sq.ft.; c/w 2 tines, EWK (previously M33)	8,300	68	30	90	78	6	93	117
WL300	WL300-TLG22.5-3T	22.5 sq.ft.; c/w 3 tines	9,450						40.5	
WL300	WL300-TLG22.5-4T	22.5 sq.ft.; c/w 4 tines	9,800						23	
WL300	WL300-TLG22.5-2T	24 sq.ft.; c/w 2 tines, EWK (previously M33B)	10,000	70	32	96	81	8	93	117

Comes standard with pin-on lugging.

* Spacing between tines.