

50 TON WHL50TC100 TAXI



Hydra-Lift WHL50TC100 Swing Cab Cranes, with a 50 ton lift rating, are ideally suited for the most demanding heavy lift jobs.

Out and down outriggers have independently operated horizontal extension cylinders and vertical jack cylinders, for true stability on uneven surfaces or in tight locations. Fully equipped cabs provide the operator with a comfortable working environment in all weather conditions. Mounted on a single steer tri-drive rear axle chassis, or tandem steer tandem rear axle chassis, WHL50TC100 Cranes deliver heavy lifting performance.

FEATURES & BENEFITS

- 50-ton lifting capacity (82,000lbs at 10' radius)
- 110' tip height (fully extended)
- 4 section 100' fully proportional boom
- 30.5' retracted length
- Continuous rotation
- 15,000 lb, 2 speed grooved drum planetary winch with integral brake for high efficiency and security, includes cable packer
- Out and down outriggers
- Dual fan oil cooler
- High strength box construction, welded booms for maximum strength to weight ratio
- A2B and LMI system with digital radio weight indicator
- Pre-wired boom and cab for work lights
- Remote Monitoring Video System - two cameras and one in-cab display (view right rear outriggers and winches)
- 40-ton four-sheave crane block (Easy Reeve)

OPTIONAL EQUIPMENT

- 31' Orientable (0°, 15°, 30°) swing around jib, stows on side of boom
- 31' - 51' Orientable (0°, 15°, 30°) two-stage swing around jib, stows on side of boom
- Hydraulic tank heater
- Boom lights
- Auxillary winch options, 12,000 lb or 15,000 lb winch
- Two person self levelling man basket
- Air conditioning
- Remote radio crane controls

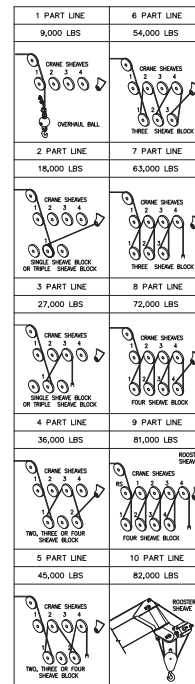
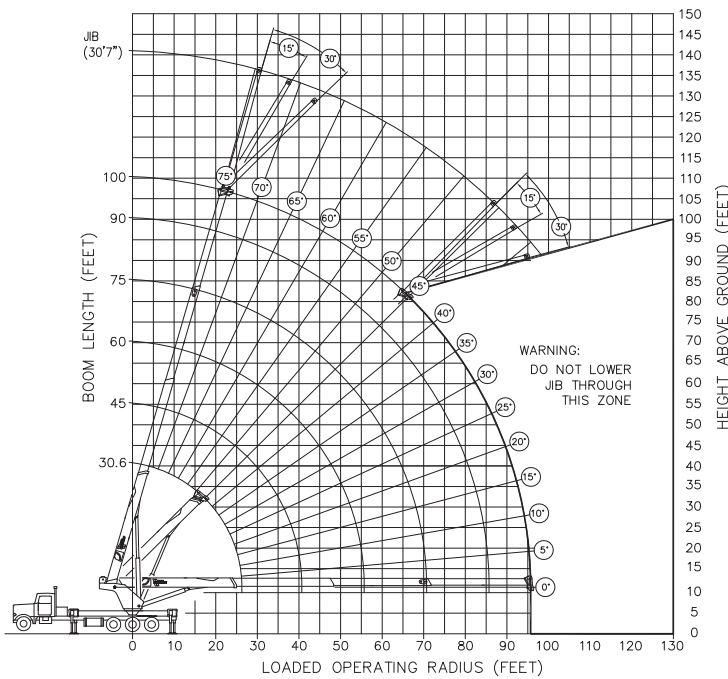
Continued on next page »

LOAD CHARTS AND SPECIFICATIONS

MAXIMUM RATED LOAD IN LBS. WITH OUTRIGGERS FULLY EXTENDED																				
LOADED OPERATING RADIUS	LOADED BOOM ANGLE	RETRACTED BOOM LENGTH	LOADED BOOM ANGLE	BOOM LENGTH	LOADED BOOM ANGLE	BOOM LENGTH	LOADED BOOM ANGLE	BOOM LENGTH	LOADED BOOM ANGLE	BOOM LENGTH	LOADED BOOM ANGLE	BOOM LENGTH	LOADED OPERATING RADIUS	30'7" ORIENTABLE JIB						
														0°		15°		30°		
														BOOM ANGLE	LOAD	BOOM ANGLE	LOAD	BOOM ANGLE	LOAD	
FEET	°	30.6'	°	45'	°	60'	°	75'	°	90'	°	100'	FEET	°	LB	°	LB	°	LB	
10	63	82,000	72	51,000									10							
12	58	72,000	69	51,000									12							
15	51	61,800	65	51,000	72	40,000							15							
20	37	46,500	58	47,500	67	38,000	71	27,500					20							
25	17	36,800	50	36,500	61	30,500	67	24,500	71	24,300	73	18,000	25							
30			41	29,000	56	27,500	63	21,500	68	21,300	70	17,500	30							
35			30	21,300	50	21,800	59	19,100	65	19,100	67	15,900	35							
40			11	16,400	43	16,900	54	17,000	61	17,000	64	14,100	40	70	8,500					
45					35	13,400	43	13,700	57	13,900	61	12,500	45	68	8,250	71	6,800	74	5,900	
50					26	10,900	44	11,200	53	11,300	57	11,300	50	65	7,200	69	6,300	72	5,500	
55					13	9,000	38	9,200	49	9,400	54	9,500	55	63	6,600	66	5,650	69	5,000	
60							31	7,700	45	7,900	50	7,900	60	61	6,150	64	5,300	67	4,750	
65								23	6,500	40	6,600	46	6,700	65	58	5,500	61	4,800	64	4,400
70									35	5,600	42	5,700	70	55	5,000	59	4,550	61	4,100	
75									29	4,700	38	4,800	75	53	4,600	56	4,200	58	3,850	
80									21	4,000	33	4,100	80	50	4,100	53	3,900	56	3,650	
85											27	3,400	85	47	3,700	50	3,650	53	3,450	
90											20	2,900	90			47	3,400	49	3,200	
95													95					46	3,050	
		975lbs		675lbs		500lbs		425lbs		375lbs		325lbs								Deductions for Stowed Jib

RATINGS ABOVE THE HEAVY LINE ARE BASED ON STRUCTURAL COMPETENCE AND NOT ON MACHINE STABILITY.

- NOTE:**
1. Deductions must be made from rated loads for lifting accessories: fixed jibs, telescopic jibs, overhaul balls, load hooks, snatch blocks and load blocks
 2. Lift line ratings are based on 5/8" 18 x 19 rotation resistant wire rope with a minimum breaking strength of 45400 lbs (sf>5).
 3. Sheaves numbered from left to right when viewed facing the crane



12155 - 154 Street
Edmonton, AB Canada T5V 1J3
Toll Free: 1 800 661 0378 | Fax: 780 455 6770

www.weldco-hydralift.com