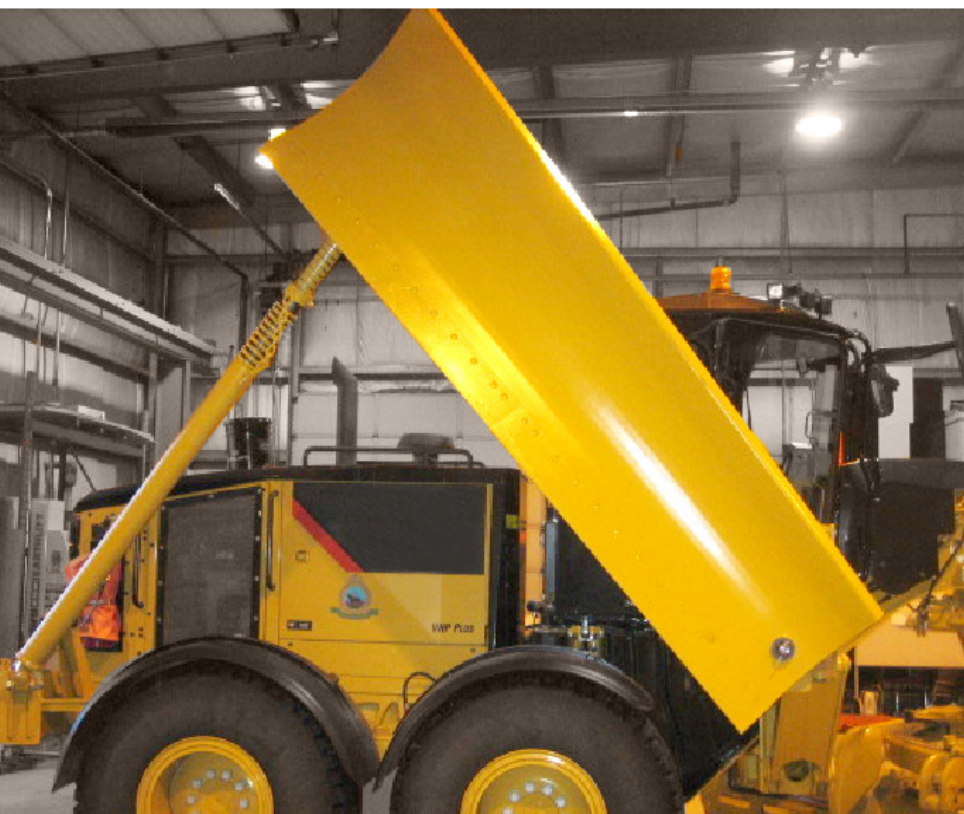


MSW202 MASTLESS SNOW WING



The WBM MSW202 Mastless Snow Wing, designed for motor graders, provides a 48" maximum benching height capability. With the use of one hydraulic control, the operator can parallel lift the snow wing moldboard from the level ground position to the maximum benching height position.

Compared to the previous MSW200 model, the MSW202 also has an increased moldboard heel to ground clearance in the transport position by 44" and increased rear mount to ground line clearance by 9.5".

FEATURES AND BENEFITS

- Simple installation with fewer hoses required on the rear of the grader on standard pushpole models
- Improved dual pushpole stops
- Increased benching height and attachment ground clearance for improved versatility in all conditions
- Elevated transport position to allow more ground clearance and eliminate the need to trim the corner of the cutting edge
- Snow wing moldboard uses same cutting edges as previous model so no need to carry extra parts inventory
- Improved support to snow wing moldboard and cutting edges
- Model also available for MG10 sized Motor Graders

Continued »

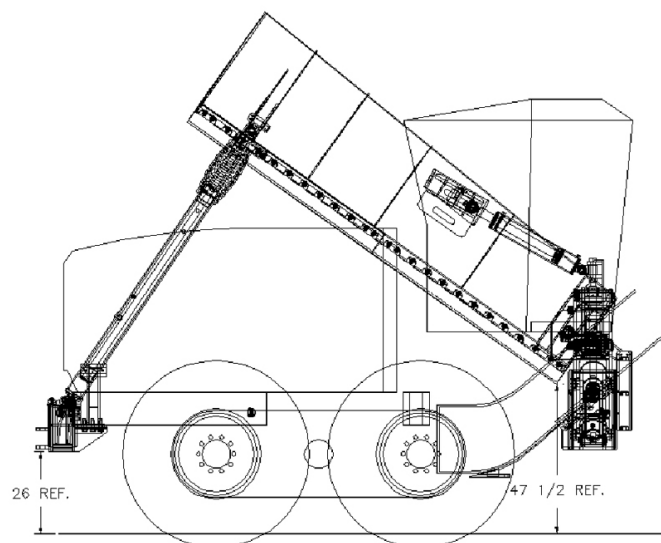
SPECIFICATIONS & ADDITIONAL FEATURES

STANDARD SPECIFICATIONS

- 12' durable performance moldboard
- 48" benching height
- Fully hydraulic lift
- Manual extendable pushpole with shear pin protection
- One-piece rear mount with single pushpole connection

OPTIONS

- Manually adjustable moldboard pitch control
- Hydraulically adjustable moldboard pitch control
- Hydraulically extendable pushpole
- Carbide cutting edges for snow wing moldboard



A standard wing requires two sets of proportionally actuated machine hydraulics (2500 – 2750 psi @ 10 – 30 GPM flow rate). The hydraulic valve section operating the snow wing moldboard lift circuit requires float capability. One additional hydraulic control valve section is required for each optional hydraulic wing function added.

	MSW202
Blade Height (Front-Rear)	33" - 44"
Cutting Edge	3/4" top drilled
Moldboard Cutting Edge Angle	70°
Travel Below Level Ground Position (front – rear) *	3" – 50"
Float Travel Distance (front-rear)	6" - 20"
Maximum Level Benching Height *	48"
Sweep Angle Range (from grader centerline)	38° - 52°
Mount Ground Clearance *	26"
Transport Width (CAT 14M) *	132"
Transport Height Range (pushpole retracted to pushpole extended) *	167-188"
ATTACHMENT WEIGHT	4,295 lbs

* Can vary with tire size/type and cutting edge type

Last revised: November 30, 2020



WELDCO-BEALES MFG.
SPECIALISTS IN ATTACHMENT DESIGN AND MANUFACTURING
www.weldco-beales.com

Western Canada: 1 800 665 0511
Central Canada: 1 800 661 4155
Eastern Canada: 1 877 320 4286