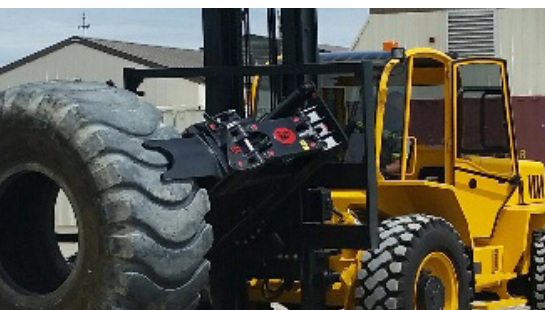


T5C-100LP-R35

Tire Handler/ Manipulator



Low profile pad design



WBM C Series Tire Handlers are designed to safely and efficiently handle OTR tires and wheel assemblies on underground and small surface mobile equipment.

The T5C-100LP-R35 is designed to work with 35" wheel assemblies and is rated for 5,500lb / 2,500Kg maximum capacity.

Also available in capacities from 3,500lb / 1,590Kg to 5,500lb / 2,500Kg for wheel loaders, forklift trucks and telehandlers.

FEATURES & BENEFITS

- "Clear path" low profile body and grip arm/ pad design allows the operator maximum visibility and versatility to remove wheel assemblies even with tight clearances to machine
- Parallelogram link grip arms for maximum operational range – allows for handling tires or wheel assemblies
- Low profile grip pads allow LHD/underground equipment wheel assemblies to be handled with ease and safety – integral fall arrest arms for operational safety for the tire technician
- Selector switch control handle mounted on 3rd valve lever provides precise handling of tires and rim components

STANDARD EQUIPMENT

- Machine mounting
- Fully proportional functional controls
- 100° pad rotation
- 90° body rotation
- Side shift 12" / 300 mm
- Integral fall arrest arms
- LED work lights
- 2 Year / 5000 Hour Warranty

OPTIONAL EQUIPMENT

- Extra lights
- Single, dual or zoom camera system
- Central greasing
- Auto grease
- "Uptime" / spare parts packages
- On – site installation assistance, commissioning and orientation training
- Logistics services

Continued on next page »

DIMENSIONS & SPECIFICATIONS

T5C-100LP-R35 SPECIFICATIONS

DESCRIPTION	DIMENSIONS	
MAX WIDTH	108.75"	2,762 mm
CROSS ARM WIDTH	85.88"	2,181 mm
S/S FRAME WIDTH	50.75"	1,289 mm
WL - MOUNT OFFSET	12"	305 mm
FLT - MOUNT OFFSET	12"	305 mm
THICKNESS	15.64"	398 mm
MAX OPEN REACH	53.56"	1,360 mm
MIN OPEN REACH	45.88"	1,165 mm
PAD DEPTH	24"	610
PAD ROTATION	100°	100°
BODY ROTATION	90°	90°
MAX REACH	77.56"	1,970 mm
PAD THICKNESS	2"	50 mm
ARM THICKNESS	n/a	n/a
MIN OPEN	22"	558 mm
MAX OPEN	96"	2,438
WL - WEIGHT	3,300 lbs	1,500 Kg
FLT - WEIGHT	2,250 lbs	1,020 Kg

