

WASTE HANDLING BUCKET



WBM Waste Handling Buckets are designed with a deep floor and are typically used in recycling / transfer stations, landfills or wherever recyclable material, waste or scrap metal needs to be moved. They are great for stockpiling or loading haul trucks.

FEATURES AND BENEFITS

- Designed to carry high volumes of light weight materials
- Overarms provide controlled grasping of any loose objects or materials

OPTIONAL EQUIPMENT*

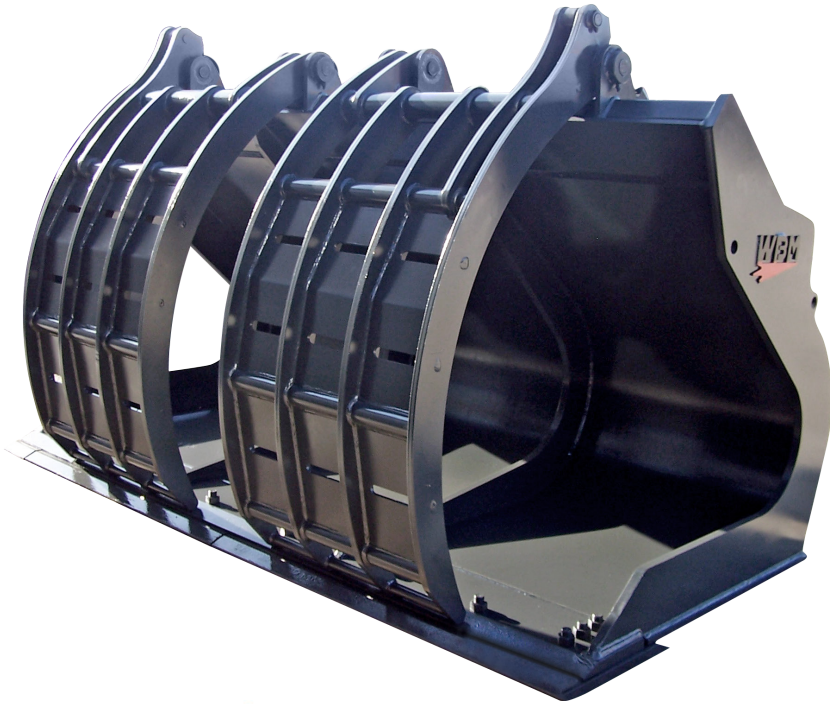
- Various base edge types available
- HD single or dual overarm clamps/ grapple tines
- HD inner ribs and bottom wear plates
- Concaved side plates for handling material that exceeds the width of the bucket

MACHINE SERIES	WBM MODEL #	CAPACITY
WL125	WL125-WHB-3.00	3.00 cu. yd.
WL150	WL150-WHB-4.00	4.00 cu. yd.
WL175	WL175-WHB-5.00	5.00 cu. yd.
WL200	WL200-WHB-6.00	6.00 cu. yd.

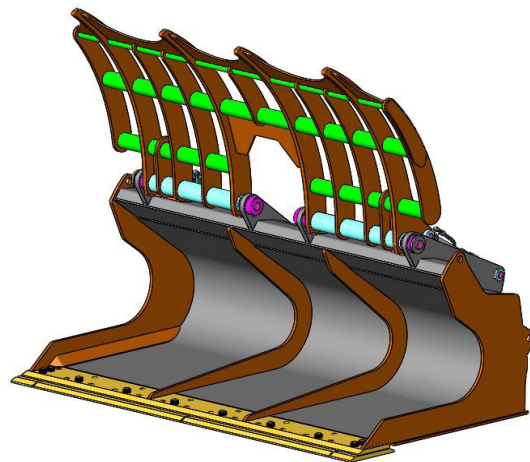
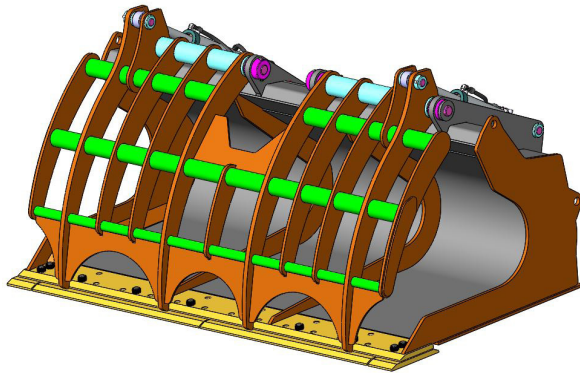
Comes standard with WBM KAT lugs, dual overarms, and bolt-on cutting edges.

*Continued on next page >>

HEAVY DUTY OPTIONAL EQUIPMENT



Overarm configurations may vary.



HEAVY DUTY WASTE BUCKET FOR SCRAP METAL HANDLING

- The bucket has a concave side plate profile that allows for handling pieces whose length exceed the width of the bucket
- Constructed using 450 Brinell Base edge, side plates, inner ribs, and bottom wear plates for increased wear life
- Internal bottom support gussets at bucket corners for durable construction ensuring long service life in rigorous applications
- Equipped with a heavy duty, hydraulically actuated overarm for containing oversized or awkwardly shaped materials
- Overarm constructed using 450 Brinell tines with dual oversized pivot bars, fitted with plain bushings, riding on full length pivot pins
- Overarm opens wide to allow the bucket edge to be pushed up to a vertical wall without the overarm getting in the way
- Dual hydraulic cylinders provide a positive clamping force
- Guarded hydraulic crossover relief valve protects cylinders