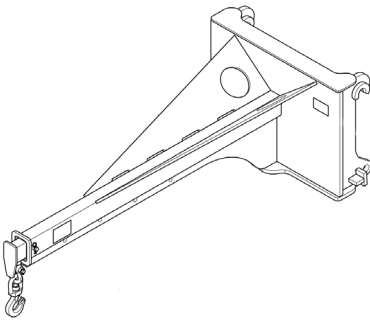
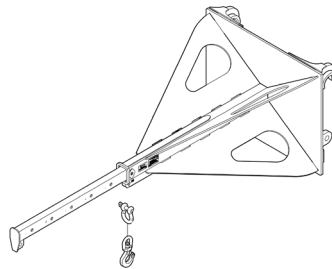


# WHEEL LOADER JIB BOOMS

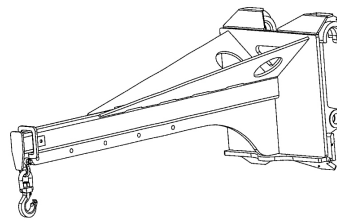
WBM Jib Booms' high reach and placement capability are well suited for unique material handling applications. Jib booms precisely handle and maneuver loads that can be attached to the chain hook on its tip. WBM Jib Booms are available in either fixed or extendable (manual or hydraulic) configurations.



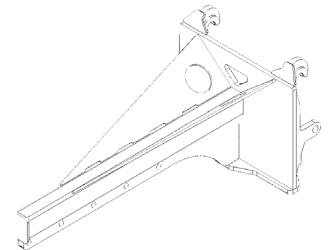
**MANUAL EXTENDABLE  
(STANDARD LIFT)**



**MANUAL EXTENDABLE  
(HEAVY LIFT)**



**HYDRAULIC EXTENDABLE  
(STANDARD LIFT)**



**FIXED LENGTH  
(STANDARD LIFT)**

## FEATURES AND BENEFITS

- Heavy-duty tubular construction
- 8 ft Boom
- Manually extendable from 7'6" to 13' 6" (standard lift) and 7'6" to 12' 6" (heavy lift)
- Hydraulically extendable from 7'6" to 12' 6"

## STANDARD EQUIPMENT

- Lifting capacity chart
- WLKAT lugs
- Lifting hook
- Jib booms are supplied with appropriate shackles and swivel hooks to handle the max rated load.

## OPTIONS

- OEM pin-on lugs
- Hydraulic cylinder extension available
- Custom lengths and capacities are available upon request
- Fixed length jib booms are available upon request

Continued on next page »

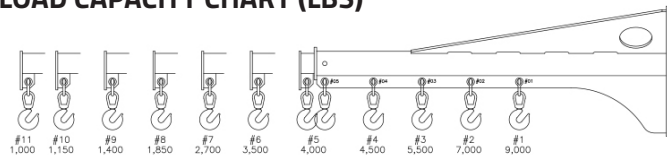
## MANUAL EXTENDABLE JIB BOOM MODELS

WBM PART #: 130-452-xxxx

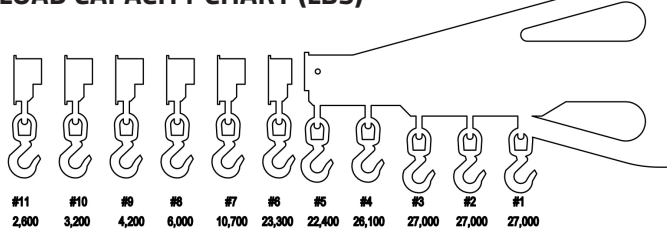
MACHINE SERIES	WBM MODEL #	CAPACITY	WEIGHT (lbs)
STANDARD JIB BOOM MODELS			
WL125	WL125-JBM	1,000-9,000 lbs	1,310
WL150	WL150-JBM	1,000-9,000 lbs	1,320
WL175	WL175-JBM	1,000-9,000 lbs	1,420
WL200	WL200-JBM	1,200-10,600 lbs	1,635
WL250	WL250-JBM	1,200-10,600 lbs	1,975
Comes standard with Kwik-a-Tach lugging extendable from 7'6" - 13'6".			
HEAVY LIFT (HL) JIB BOOM MODELS			
WL250	WL250-HL-JBM	2,600-27,000 lbs	3,000
WL300	WL300-HL-JBM	2,600-27,000 lbs	3,200
WL400	WL400-HL-JBM	2,600-27,000 lbs	4,050

Comes standard with Kwik-a-Tach lugging extendable from 7'6" - 12'6".

### MANUAL EXTENDABLE JIB BOOM (STANDARD) LOAD CAPACITY CHART (LBS)



### MANUAL EXTENDABLE JIB BOOM (HEAVY LIFT) LOAD CAPACITY CHART (LBS)



Load ratings are based on the structural integrity of the jib boom only. Actual lift capacity may be limited by the carrier machines hydraulic or stability limitations. Refer to the machines operator's manual for capacities & handling limitations.

Standard Sized Jib Booms are recommended for use on WL100 thru WL250 series wheel loaders.

Heavy-Lift Jib Booms are recommended for use on WL250 thru WL400 series wheel loaders.

Please contact your local dealer or WBM representative to ask about our Fixed Length Jib Boom options.

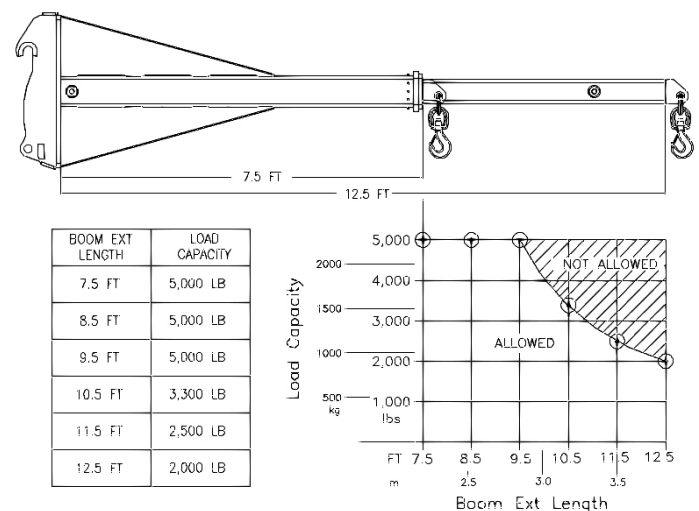
## HYDRAULIC EXTENDABLE JIB BOOM MODELS

WBM PART #: 130-456-xxxx

MACHINE SERIES	WBM MODEL #	CAPACITY	WEIGHT (lbs)
STANDARD JIB BOOM MODELS			
WL125	WL125-JBH	2,000-5,000 lbs	1,390
WL150	WL150-JBH	2,000-5,000 lbs	1,400
WL175	WL175-JBH	2,000-5,000 lbs	1,430

Comes standard with Kwik-a-Tach lugging extendable from 7'6" - 12'6".

### HYDRAULIC EXTENDABLE JIB BOOM LOAD CAPACITY CHART (LBS)



**WELDCO-BEALES MFG.**  
SPECIALISTS IN ATTACHMENT DESIGN AND MANUFACTURING  
[www.weldco-beales.com](http://www.weldco-beales.com)

Western Canada: 1 800 665 0511  
Central Canada: 1 800 661 4155  
Eastern Canada: 1 877 320 4286

Last revised: March 7, 2022