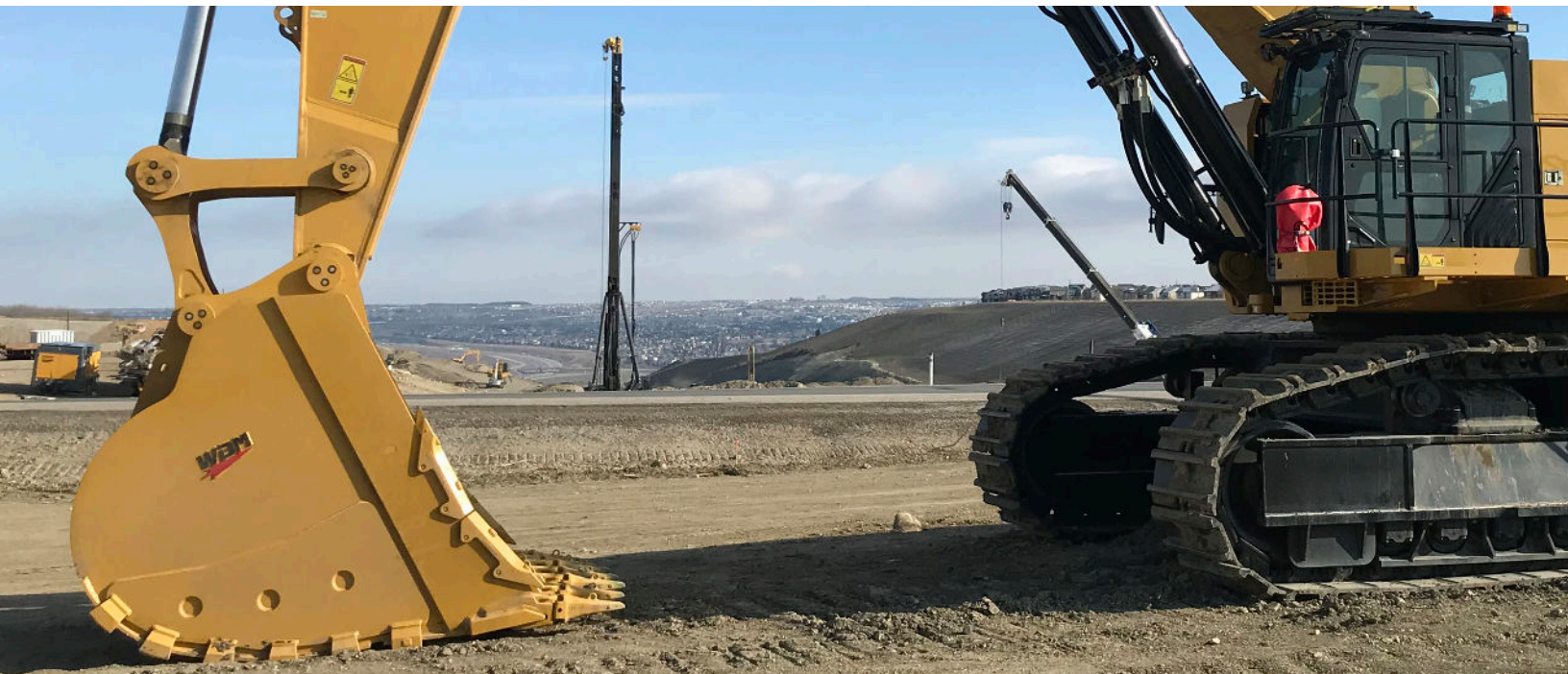


MUSKEG BUCKET



WBM Muskeg Buckets are used in the low-lying marsh areas commonly found in Western Canada and Alaska and are ideal in aiding construction operations during winter months with their extensive guarding and upsized G.E.T.

FEATURES & BENEFITS

- Larger capacities and widths versus Extreme Duty Digging buckets
- Inside and outside wear plates and liners for extended wear/service life; reduced maintenance costs

STANDARD EQUIPMENT

- 450 Brinell base edge (spade nose)
- Drilled for side bar protectors and leading edge shrouds
- Outside cheek plates
- inside and outside wear liners

OPTIONAL EQUIPMENT

- Pin-on side cutters and side bar protectors
- Weld-on lip shrouds
- Leading edge shrouds
- Engineered certified lifting lug

